

## **Historic, archived document**

Do not assume content reflects current scientific knowledge, policies, or practices.

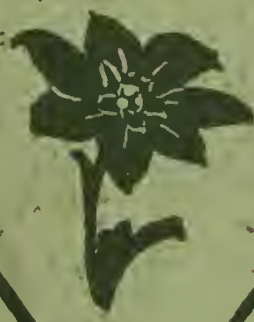


62



# BEAUTY *from* BULBS

National Agricultural Library  
RECEIVED  
★ JUN 28 1975 ★  
U. S. Department of Agriculture



1935







# BEAUTY *from* BULBS

THE LEADING VARIETIES OF BULBS SUITABLE  
FOR OUTDOOR AND INDOOR CULTURE  
AND OF PROVEN MERIT



*John Scheepers, Inc.*

SPECIALISTS IN FLOWER BULBS

EXECUTIVE OFFICES

522 FIFTH AVENUE

NEW YORK CITY

MAIN OFFICES AND EXHIBITION GARDENS "PARADOU" AT BROOKVILLE, LONG ISLAND





AWARDED US BY HER MAJESTY, QUEEN WILHELMINA  
OF THE NETHERLANDS AT THE  
INTERNATIONAL FLOWER SHOW, 1930



AWARDED US TWICE BY THE  
GARDEN CLUB OF AMERICA



AWARDED US BY  
PRESIDENT CALVIN COOLIDGE FOR  
HORTICULTURAL ACHIEVEMENT



AWARDED US THREE TIMES BY  
THE HOLLAND BULB GROWERS'  
ASSOCIATION OF HAARLEM,  
HOLLAND

#### Gold Medals

SOME OF MANY HIGH HONORS  
AWARDED TO JOHN SCHEEPERS, INC.

OUR REPUTATION FOR FINEST QUALITY MERCHANDISE IS WELL KNOWN. WE AIM NOT ONLY TO MAINTAIN THIS REPUTATION, BUT TO IMPROVE IT BY REASONABLE PRICES IN KEEPING WITH OUR HIGHEST QUALITY AND THE SERVICE WE ARE ALWAYS GLAD TO RENDER OUR CLIENTS. . . . THE FULFILLMENT OF THIS AIM HAS GAINED US OUR PLACE AS LEADERS IN THIS INDUSTRY.



# Narcissi—Daffodils

The varieties listed in these pages, we consider the best in the Narcissus world today—irrespective of prices.

## DIVISION I.

### TRUMPET DAFFODILS

Divided in Three Classes

Trumpet or Crown as Long as or Longer than the Perianth Segments

#### Class A. All Yellow

**AEROLITE.** Here is a golden daffodil that is sure to replace many older varieties; the large flower is beautifully proportioned, giving the impression of gracefulness, despite its size; perianth deep primrose with a pure medium-yellow trumpet which is held in bold relief by the broad pointed star formed by the flat opening outer petals, an inch and a half wide; medium early but remaining until late, and one of the longest lasting daffodils either in the garden or after being cut. \$1.75 for \$10; \$15 per 100.

**ALASNAM.** Wide, short, densely frilled trumpet of pure deep yellow, a shade deeper than the perianth; finely placed with good neck, the flower "looks you in the eye"; excellent for landscape groups; very early. \$4.25 for 10; \$40 per 100.

**CLEOPATRA.** A splendid flower which has won many awards and is well known everywhere; very broad lemon-yellow imbricated perianth with overlapping petals; long, bold, deep golden trumpet; very late. \$1.75 for 10; \$15 per 100.

**DAWSON CITY.** One of the most refined of the yellow trumpets of merit as a splendid garden variety as well as for the exhibition table. Broad, flat, overlapping perianth of smooth substance with well-formed flanged trumpet of the purest golden-yellow. \$3.75 for 10; \$35 per 100.

**DIOTIMA.** Considered by many experts the very best of the new super-giant yellow trumpets; despite its huge size (perianth being five to six inches across) the whole flower is beautifully proportioned and is carried gracefully on flattened tapering stems, two feet tall, entirely free from the amaryllis-like stiffness of many of the giant trumpets; the broad overlapping petals form a star-shaped perianth of medium deep primrose, trumpet somewhat more deeply colored; undoubtedly one of the finest. Each, \$3.

**EMPEROR.** Rich, full, yellow trumpet, deep primrose perianth. Splendid for planting in masses and for naturalizing. Extra heavy bulbs. \$1.00 for \$10; \$7.50 per 100.

**FAKIR.** A great favorite. Very refined flower of great size and of the purest golden-yellow self color. A fine exhibition flower. Each, \$4.

**INSURPASSABLE.** The most outstanding of the yellow trumpets. A very large flower, tho' refined, of great substance and of a deep golden-yellow. A fine exhibition variety. Each, \$10.



Typical Trumpet Daffodil

**LORD WELLINGTON.** One of the best of the yellow trumpet daffodils. The enormous flower is of rich golden yellow with broad petals, large trumpet and carried on a tall strong stem. Tho' the flower is very large it is, on account of its perfect form, refined in appearance. Each, \$2.

**KING ALFRED.** Remarkably handsome daffodil; unrivaled in its particular color. Large, bold, golden yellow flower with deeply frilled mouth elegantly recurved; of lasting quality both in the garden and when cut. Extra heavy bulbs. \$1.35 for 10; \$11.00 per \$100. SPECIAL STOCK, only limited quantity available, \$2.25 for 10; \$20.00 per 100.

**MAC MAHON.** Of splendid deep golden self color with a remarkable metallic sheen, the perianth is glittering as if dusted with mica; the green coloring of the stem runs well up to the base of the perianth. A seedling of the well-known variety "King Alfred," of great merit. Each, \$4.

**MINIMUS (true).** The smallest and dwarfest of all daffodils, producing outdoors in early spring dainty little trumpet flowers of a rich full yellow; height about 3 inches. It likes a peaty soil and may be naturalized in rockeries or in grass, or grown in pots or pans. \$6.75 for \$10; \$65 per 100.

**MINOR (true).** A most graceful and charming very early-flowering miniature daffodil with full yellow perianth gracefully twisted, the miniature trumpet being elegantly flanged at its mouth; height 6 inches. This is one of the most scarce little daffodils and our stock is very limited. \$9.25 for 10; \$90 per 100.

**MOUNT ROYAL.** Wide spreading yellow trumpet with perianth having three base petals extra wide, the three inner being narrower and more curved, making a particularly well-formed attractive flower. Each, \$4.

**NANUS (true).** A charming variety, a miniature yellow trumpet daffodil, larger than *Minimus* but smaller than *Minor*, flowers rich full yellow; very dwarf and early, a gem for the rock garden, and for naturalizing on grassy banks; height 4½ inches. \$5.75 for 10; \$55 per 100.

**OLYMPIA.** Very refined flower, in color and form similar to "Emperor" but much larger and freer flowering. A very sturdy and most satisfactory grower. \$1.40 for 10; \$11.50 per 100.

**STATENDAM.** An extremely large golden yellow trumpet daffodil of superb yet graceful proportions. Massive overlapping deep golden yellow perianth, large, flaring, well-formed trumpet. A very vigorous grower most suitable for exhibition purposes. Each, \$3.



**TRESSERVE.** One of the leaders among the giant trumpets; extra large flower of deep canary-yellow with a paler perianth, the segments of which reach forward about the trumpet, producing a flower of distinct individuality; the mouth of the trumpet, two inches across, is deeply lacinated. Extra heavy bulbs, \$1.20 for 10; \$9.50 per 100. SPECIAL STOCK only limited quantity available, \$2.05 for 10; \$18 per 100.

**WARWICK.** Another of the striking King Alfred seedlings outstanding in every way and very early; refined stem and neck bearing a star-shaped perianth of great substance; golden yellow, with trumpet a shade deeper in color. \$3.25 for 10; \$30 per 100.

#### Class B. All White or Almost White

**ADA FINCH.** A most beautiful novelty of outstanding merit. Has received highest awards wherever exhibited. Perianth is overlapping, of fine substance and of purest white with a pure white trumpet. Very refined flower, an exhibition variety. Each, \$6.

**BEERSHEBA.** Perianth and trumpet of magnificent proportions. Sturdy foliage and stem. Height 20-22 inches. Its color is not pure white, yet is expressive of purity in the highest sense. Those who are forming collections of fine Narcissi rate Beersheba at the top of the large white trumpets. Each \$3.50.

**LA VESTALE.** Giant trumpet type with pure ivory-white perianth, of informal design, with trumpet of deep cream-yellow; tall, fine for small groups or naturalizing in dim shade; though of delicate appearance it is of extra good substance and lasts well; very early. \$2.75 for 10; \$25 per 100.

**LORD LOUIS MOUNTBATTEN.** An outstanding flower of giant size, but beautiful proportions which will appeal to the most discriminating; broad overlapping perianth petals of palest primrose, orange at base on the outside; trumpet just a shade deeper at base, color intensifying at the mouth; strong grower but a refined flower of delicate and harmonious coloring. Each, \$3.

**LOVENEST.** A rare beauty, among the daintiest of all the trumpets. Medium in height with a star-shaped perianth of informal type; nicely proportioned trumpet of saffron-yellow turning to a lovely pale suffusion of apricot; delightfully charming at all stages and very early. Thankful for a little shade which will help to bring out the soft color tones. Each, \$1.25; \$10 for 10.

**MOSCHATUS OF HAWORTH.** The snowy white daffodil of the Spanish Pyrénées, a dainty little flower variable in size with drooping perianth. A gem to naturalize in grass and for the rock garden, delighting in partial shade and on grassy slopes facing north. It also makes a charming pot plant; height, 6 inches. \$6.75 for 10; \$65 per 100.

**MRS. ERNST H. KRELAGE.** One of the finest white trumpet Narcissi. Produces large erect flowers of great substance. Extra heavy bulbs. \$2.25 for 10; \$20 per 100.

**MRS. JOHN BODGER.** Considered by many the most exquisite of the new trumpets; a semi-dwarf hybrid of medium size, with a pure white star-shaped perianth and a good trumpet; wonderful variety for the rock garden or the front of the border; sure to become a great favorite as it has been enthusiastically received at every show. Each, \$3.

**MRS. R. O. BACKHOUSE.** This famous flower, of delicate distinction, is most unusual and charming in color. Its flaring, informal perianth of ivory-white, holds forth a beauteous, finely proportioned, slim, long trumpet of clear pale apricot, tinged slightly deeper apricot at the edges, which are deeply fringed. Delicately beautiful but of exceptional substance and long lasting. Like many of the trumpets it nods a very little, and the wonderful hue of the trumpet and the partly reflexed perianth make it a most uncommon and delicious daffodil, one of those treasures which a collector would love to possess. One of the choicest that may be seen in our collection of more than four hundred varieties in our display garden at Brookville, Long Island. Extra heavy bulbs. Each, \$3.

**ROSABELLA.** A fine exhibition variety and a welcome addition to the small group of "Pink Daffodils." Most refined, perianth of creamy white slightly flaring and nicely frilled apricot-pink trumpet. Each, \$12.

**W. P. MILNER.** A miniature with white trumpet and perianth. Splendid for planting in the rock garden or for small pans. Extra heavy bulbs, \$2.75 for 10; \$25 per 100.

#### Class C.—Perianth White, Trumpet Yellow (Bi-color)

**GLORY OF SASSENHEIM.** A beautiful Bi-color variety, very free-flowering and early. Creamy white perianth, canary-yellow trumpet. Extra heavy bulbs, \$1.05 for 10; \$8 per 100. SPECIAL STOCK, only limited quantity available, \$1.75 for 10; \$15 per 100.

**MADAME VAN WAVEREN.** One of the finest of the Bi-color trumpets. A great exhibition variety. Flowers are of large dimension, but refined. Broad, overlapping perianth of the purest white with deep yellow trumpet. Each, \$3.

**OCTAVIANUS.** Exceptional flower of beautiful proportion and finish, with a large recurved deep trumpet supported by a most substantial perianth; good stem and up-looking flower; the perianth is pale primrose and the trumpet a pure moon-yellow when opening, giving the effect of moonlight through mist. When fully open the perianth turns slightly paler, justifying its classification under this class. Each, \$6.





Yellow Trumpet Narcissus Statendam  
See Page 3



Bi-color Trumpet Narcissus Robert E. Lee  
See Page 5



Hybrid Trumpet Narcissus Mrs. R. O. Backhouse  
See Page 4



Incomparabilis Narcissus John Evelyn  
See Page 6



Incomparabilis Narcissus Abelard  
See Page 5



Barrii Daffodils (Narcissi) Anna Croft  
See Page 7



Incomparabilis Narcissus Franciscus Drake  
See Page 6



Incomparabilis Narcissus Scarlet Lancer  
See Page 7



**ROBERT E. LEE.** A striking new giant Bi-color with frilled lemon-yellow trumpet having a wide open mouth, two inches across. The perianth is broad and overlapping of a pale citron shade. Of outstanding merit this splendid variety should be in every worthwhile collection. Each, \$5.

**SPRING GLORY.** Still a great favorite for the garden and for all purposes. Always blooming very freely, on an excellent stem stands a very large flower of beautiful form. The trumpet is long and of a chrome-yellow with a reflexed brim. The perianth is white. Fine for mass planting and for permanent naturalizing. Extra heavy bulbs, \$1.10 for 10; \$8.50 per 100. SPECIAL STOCK, only-limited quantity available, \$1.75 for 10; \$15 per 100.

**VAN WAVEREN'S GIANT.** One of the largest of the Trumpet Daffodils; flowers of huge dimension with deep golden trumpet, well opened; perianth is of campanulate form, of fine primrose

color, with outer petals exceptionally broad and inner ones usually slightly twisted making the flower graceful. Very tall and vigorous grower. Extra heavy bulbs, \$1.90 for 10; \$16.50 per 100. SPECIAL STOCK, only limited quantity available, \$2.50 for 10; \$22.50 per 100.

**VICTORIA.** A flower of fine proportions. Perianth pure white, well formed. Trumpet of purest yellow. Fine for outdoor mass planting. \$1.05 for 10; \$8 per 100.

**WHISTLER.** This superb variety is a carefully selected hybrid of Robert Sydenham, of marvelous size and symmetry. Its gold glistening bright yellow trumpet seems to send a call to all the world to come and view its beauty, while the lustrous perfect sulphur perianth serves as a shield to enhance the grace and the color of the trumpet. A leading exhibition variety now, its future as a great garden flower is absolutely assured. \$5.25 for 10; \$50 per 100.

## DIVISION II. INCOMPARABILIS

(Large Chalice-Cupped Daffodils)

Cup measuring from one-third to nearly the length of the perianth segments

Varieties marked 2a have a yellow perianth. Varieties marked 2b have a white perianth.

**ABELARD 2a.** Broad yellow cup, orange tint at edge, and showy orange anthers, supported by broad primrose perianth of exceptionally good substance; beautiful in the unfolding bud; and unusually long lasting flower, A. M. 1928. Each, \$7.50.

**BERNARDINO 2b.** Grand flower with very large, creamy perianth and widely expanded cup heavily stained deep orange. \$1.10 for 10; \$8.50 per 100.

**BARBARA PRATT 2b.** A most remarkable flower. A seedling of the well known variety "John Evelyn". Cup is very large and flat, heavily flanged and frilled, colored deep yellow with orange-red margin. Perianth petals overlapping of purest white. Large flower measuring fully 3½ inches across, extremely fine substance. Very beautiful. Each, \$36.

**BATAVIER 2a.** The first of a new line of seedlings, all most remarkable for the perfection of form both of perianth and cup. In this variety the strength and coloring of the Backhouse seedlings has been combined with the delicate perfection of the recent introductions, such as "Jocunda." The perianth is creamy yellow, very broad and of solid texture, the large flaring cup is yellow, delicately margined red or orange-red. The plant is unusually sturdy with long broad leaves, yet the flower is borne well above the foliage. A perfect show flower. Each, \$40.



Typical Incomparabilis Daffodil

**CARLTON 2a.** A most beautiful variety. Broad overlapping flat perianth with a large expanded cup. The whole flower is of a soft uniform yellow. Very free flowering and a strong and sturdy grower. Fine for exhibition. Each, \$2.50.

**CROESUS 2a.** Universally popular for the garden. The widely opened, broadly fluted, glowing rich orange cup of this daffodil against its very slightly reflexed perfectly formed perianth of creamy white with a tinge of lemon-yellow, gives it a central glow

which can never pass unnoticed. The outer petals of the perianth are nearly touching, the inner ones overlapping, opening flat. A most attractive and striking daffodil. An almost scarlet rim enhances the rich orange of the cup, and the bold fluting of the cup is a part of its beauty. Croesus is substantial, free flowering, and a fine propagator; desirable in every way. \$1.75 for 10; \$15 per 100.

**DORINE 2b.** A most beautiful novelty of great size, tho' very refined. Fine, overlapping perianth of pure creamy white. Cup of deep orange and large. Tall and vigorous grower. Each, \$5.

**DICK WELLBAND 2b.** One of the finest of recent introductions. Very strong grower and exceptionally free flowering. The perianth is pure white and the cup a brilliant flame-orange. One of its most remarkable qualities is that the color does not fade but rather intensifies with age. The flower has unusual lasting qualities. Its greatest beauty lies in the startling contrast between petals and cup which makes it stand out even in the largest collection of daffodils. An exhibition variety "par excellence." Each, \$5.

**DONATELLO 2a.** A most attractive flower which will appeal to the discriminating. Light primrose perianth slightly reflexed with overlapping petals



giving a golden effect, supporting a pure deep yellow trumpet of beautiful design, ruffled and frilled and of uniform pure yellow. \$2.25 for 10; \$20 per 100.

**FORTUNE 2a.** First Class Certificate R. H. S. This is undoubtedly the most wonderful flower of recent introduction. It is a Giant Incomparabilis of the largest size, perfect form, and gorgeous color on a 2 foot stem; fine flat overlapping perianth of great substance which stands boldly at right angles to the crown of clear deep lemon-gold color with long bold crown of wonderful glowing coppery red-orange. It is of great substance, vigorous, good doer and very lasting—free bloomer. A remarkable feature of this gorgeous flower is its extreme earliness. Each, \$9.

**FRANCISCUS DRAKE 2b.** It is impossible to describe adequately the beauty of this unusual flower; the pure white perianth petals are of unusual substance, an inch and a half wide, and tinted gold at the base, which shows through on the outside; the cup, wide and deep, is golden yellow at the base, changing gradually to flame-orange at the densely frilled edge; the flowers are held well above the fine foliage and give the effect of a flock of white seagulls taking flight; strong growing and very free flowering. Each, \$1.25; \$10 for 10.

**GALOPIN 2b.** An outstanding exhibition variety that should be included in every collection. The broad overlapping petals are of purest white with a deep orange-red cup. The flowers are of large size and carried on tall, strong stems. Each, \$3.

**HELIOS 2a.** A most refined flower. Creamy yellow perianth, star-shaped; pale orange cup, slightly frilled. A deliciously beautiful variety a clump of which placed near an evergreen would make an unusually interesting picture. Very early. \$3.75 for 10; \$35 for 100.

**IRENE BORDONI 2b.** A wonderful novelty. Very fine overlapping petals of pure white with a deep red cup. Flowers are of large size and substance. Very refined. A fine exhibition variety. Each, \$3.

**JOCUNDA 2a.** One of the finest of the recent introductions. A striking color contrast in the pure white overlapping perianth and the frilled cup of dark blood-red. A wonderful show flower. Each, \$24.

**JOHN EVELYN 2b.** One of the finest Incomparabilis. Deservedly an international favorite; outstanding among the Incomparabilis hybrids. Flat opening perianth, 4 to 6 inches across, with a flat cup nearly two inches in diameter, densely frilled, the perianth being pure white, without any trace of shading, and the cup lemon-yellow and fluted or shirred to the base; good neck; strong grower; free-flowering and a good propagator; one of the greatest daffodils of the present day. \$5.25 for 10; \$50 per 100.

**L'AIGLON 2a.** A splendid novelty. Outstanding among hundreds of fine varieties. Star-shaped cream-primrose perianth and chrome-yellow cup with deeply fringed edge of burning scarlet-orange; unsurpassed for the show table. Each, \$16.

**LOUDSPEAKER 2a.** Among all the fine daffodils of recent introduction, no other has more quickly made a name for itself; a flower of great size, 4½ inches across, with wide flaring trumpet 2 inches across, the whole flower being finely proportioned, and borne on a tall stem with a good neck; in color the perianth is pure citron-yellow, and the cup chrome-yellow, deepening slightly at the frilled edge; conspicuous styles of the same shade as the perianth add to its beauty; outstanding and in every way a satisfactory, as well as a sensational flower, both in the garden and on the show table. Each, \$7.50.

**MARY LONGSTREET 2b.** Beautifully formed flat flower on tall, gracefully slim-necked stem; broad, overlapping perianth, with petals creamy white tinted gold at edges, forms an unusual background for the flaring crinkled cup of uniform blood-orange; very handsome and unusual novelty. Each, \$8.

**MARY PICKFORD 2a.** An exceptionally beautiful seedling which we can recommend highly. Light lemon-yellow perianth with a nicely frilled trumpet of deep orange-red. A fine exhibition flower. Each, \$24.

**MERKARA 2a.** A very striking and distinct variety. The very flat, much overlapping perianth is sulphur yellow; the large expanded crown is deep orange-red throughout. Each, \$5.

**MI CARÈME 2a.** Very large flower of good form and substance. Perianth creamy yellow, overlapping; orange cup. \$3.25 for 10; \$30 per 100.

**ORANGE GLOW 2a.** A very beautiful daffodil. Flowers are very large with broad flat perianth often five inches across; the cup is a deep glowing orange, beautifully frilled. Each, \$2.

**ORANGE KING 2a.** A gorgeous flower of substantial build and unusually long lasting; perianth light citron, supporting a wide, deep and densely frilled cup, chrome-yellow at base, changing to vivid flaming orange in a broad band extending half an inch down from the frill, both inside and outside; medium late, A. M. 1926. Each, \$8.

**ORANGE OPHELIA 2b.** One of the finest of recent introductions with a finely built perianth of cream-white and deep cup with dense frill, chrome-yellow at base, changing to vivid flaming orange in a broad band extending half an inch down, both inside and outside, from the frill. Each, \$16.

**ORANGE SUN 2a.** Perfectly formed flat-opening perianth of pale primrose; beautifully proportioned trumpet of deep primrose with orange fringed frill. A very pleasing color harmony. Each \$16.

**PRINCE OF ORANGE 2b.** A perfect daffodil with a flat, perfectly overlapping perianth of purest white with large evenly formed cup of bright orange-red. Each, \$6.

**RED CROSS 2a.** Famous throughout the daffodil world; extra large strong flower, opening flat; primrose-yellow perianth, and deep yellow cup densely frilled, of deep orange. Substantial and long lasting, fine both in the garden and for exhibition. One of the finest of the red-cupped Narcissi. Each, \$1.25; \$10 for 10.



**SCARLET LANCER 2b.** A pleasing and refined flower. Perianth well formed with overlapping petals of purest white with deep orange-red cup. Each, \$2.

**SIR WATKIN 2a.** Bold, handsome flower; sulphur perianth, yellow cup tinged bright orange. Very fine for masses or for naturalizing. \$.90 for 10; \$6.50 per 100.

**STELLA PRATT 2a.** Not unlike Red Cross, star-shaped perianth of light primrose, deep yellow trumpet, shading to orange; white tips on perianth petals. Very fine variety. \$5.05 for 10; \$48 per 100.

**WALTER HAMPDEN 2a.** Very tall and outstanding; bright primrose perianth and pure yellow wide open trumpet, with a tint of orange in the frills; very vigorous grower. Each, \$3.

**WHITELEY GEM 2a.** This variety was awarded the Gold Medal for the best new variety at the London Daffodil Show, March 1928. It is ex-

tremely early, by far the earliest of the red cups to come into bloom. The flower is beautifully balanced and carried on a very tall stem; the proportions of perianth and cup are very pleasing. The perianth is not much overlapping but of great substance. The coloring is a very fine deep golden yellow perianth with a bright orange, finely fluted cup. Each, \$30.

**WHITEWELL 2b.** Pure white, broad-petaled starry perianth, opening flat, or slightly reflexed; cup fluted and frilled, deep primrose with orange edge; flower held well above the foliage. \$1.15 for 10; \$9 per 100.

**WILL SCARLET 2b.** Medium sized flower of informal habit; reflexed perianth, petals often slightly curled; good cup of yellow-ochre with flaming orange-scarlet edge; fine for the rock garden or for naturalizing near a pool, along the woodland edge or in the slightly shaded border. One of the most striking daffodils. \$1.15 for 10; \$9 per 100.

### DIVISION III. BARRII (Short-cupped Daffodils)

Cup or crown measuring less than one-third the length of the perianth segments.

Varieties marked 3a have a yellow perianth. Varieties marked 3b have a white perianth.

**ALCIDA 3b.** Giant flower, pure white perianth, opening flat, star-shaped, with individual petals over 1½" wide; broad citron-yellow cup with blood-orange frill; strong grower, fine substance and wonderfully free-flowering; very late, A. M. 1921. \$2.25 for 10; \$20 per 100.

**ANNA CROFT 3a.** One of the leaders in every show and equally fine in the garden; perianth light primrose, supporting a large sized trumpet, deeply crinkled and frilled; cup of darker yellow shading to orange at edge. Very tall stem. \$5.05 for 10; \$48 per 100.

**BATH'S FLAME 3a.** Deep yellow; cup deeply edged orange-red; a giant flower and one of the finest in this section. \$1.50 for 10; \$12.50 per 100.

**DIANA KASNER 3b.** One of the most valuable show varieties. Pure white perianth with a large fluted yellow cup, frilled blood-red. Very free-flowering. \$1.85 for 10; \$16 per 100.

**ECLAIR 3b.** A most outstanding exhibition variety. Semi-Poeticus type with broad overlapping perianth of purest white; shallow cup, yellow at base, shading to blood-red. A unique flower of unusual substance and form. Very late. Each, \$40.

**FIRETAIL 3a.** D deservedly popular the world over; broad-petaled creamy-white perianth and large orange cup with scarlet-orange frill, F. C. C. 1925. \$3.25 for 10; \$30 per 100.

**FLEUR 3b.** Broad-petaled reflexing perianth of pure Poeticus-white, with a flat, deeply frilled cup, citron-yellow, edged orange-red; beautifully proportioned, A. M. 1927. Each, \$2.



Typical Barrii Daffodil

**LADY DIANA MANNERS 3b.** A very fine daffodil with broad white perianth and a large, flat orange crown, broadly margined with deep red. A wonderful show variety. \$7.75 for 10; \$75 per 100.

**LADY KESTIVE 3b.** This is undoubtedly one of the finest Barrii introduced. Words fail to describe this wonderful daffodil adequately. Suffice it to say that the perianth is pure white, well formed and substantial and that the cup is of the very deepest red ever seen in a daffodil; the color does

not seem to fade in the sun. A wonderful show variety. Each, \$24.

**LADY MOORE 3b.** A startling flower, for its almost pure white perianth, and its cup of vivid stripes of orange at the rim, and clear chrome-yellow below. Very handsome and distinguished. \$1.40 for 10; \$11.50 per 100.

**MAYFLOWER 3b.** One of the new Barrii-Poeticus hybrids with perianth of pure glistening white, broad overlapping petals, and yellow eye with a red picotee edge. Extremely showy, tall and very striking. Each, \$1.50; \$12.50 for 10.

**MRS. BARCLAY 3b.** Large flower with flat, reflexed, broad-petaled overlapping perianth of pale primrose, changing to pure white; deeply frilled flat cup of primula-yellow, with dainty orange picotee; extremely showy and a great favorite in the garden or for exhibition. \$3.25 for 10; \$30 per 100.

**NOBILITY 3b.** Large flat flower, perfectly formed. Petals are a creamy white, overlapping with flat, deep orange-red crown. A most beautiful novelty most suitable for either exhibition or the garden. \$3.75 for 10; \$35 per 100.

**PEGGY 3b.** Very large, flat-opening perfectly formed perianth of a pure Poeticus-white, and of exceptional texture; medium-sized cup of lemon-yellow with golden-orange margin. A tall and vigorous grower which belongs in every collection. Each, \$6.



**PEKING 3b.** Upon first impression when seeing this daffodil, the word perfection seems to come to one's mind. In its type it is the most perfect flower. Generally speaking it is like the old variety "Masterpiece," though about twice as large in all proportions. The perianth is perfectly rounded, more so than in any other Barrii. The cup is rather flat, nicely ribbed and of the very deepest reddish orange. While the stems are not exceptionally tall, the whole plant is so beautifully balanced, that we can recommend it strongly to all lovers of daffodils. Each, \$60.

**RED BEACON 3b.** A most lovely flower which immediately attracts one by its brilliantly colored cup; the perianth is ivory-white, slightly shaded sulphur at the base; the cup is prettily fluted and of the most intense fiery orange-red. \$1.75 for 10; \$15 per 100.

**RED GUARD 3a.** A very attractive novelty. Perianth sulphur-yellow with glowing orange-scarlet cup often producing two flowers on a single stem. A very unique flower. \$7.75 for 10; \$75 per 100.

#### DIVISION IV. LEEDSII

##### (Eucharis-flowered Daffodils)

Perianth white, and cup or crown white, cream or pale citron, sometimes tinged with pink or apricot. Varieties marked 4a have a cup or crown not less than one-third but less than equal to the length of the perianth segments.

Varieties marked 4b have a cup or crown less than one-third the length of the perianth segments.

**DAISY SCHAEFFER 4a.** One of the best of the remarkable new Giant Leedsii type, the flower 4½ inches across, with cup nearly two inches it resembles a Giant Trumpet, but much more graceful in form. Perianth is pure white, with cup opening primrose and turning to light canary-yellow, deeper at the base; long lemon-yellow stigma and styles add to the color harmony of this remarkable flower. Each, \$40.

**GERTIE MILLAR 4a.** Wonderful flower of the new Giant Leedsii type with pure white perianth similar to and as large as Van Waveren's Giant, with a beautifully proportioned pale primrose cup deeply fluted and of translucent texture; unusually long pistils and anthers match this color perfectly. Each, \$2.

**HERA 4b.** In this daffodil the pure white perianth segments seem almost joined together, so perfect is their overlapping; the pale straw-colored cup is very markedly fluted and with the slightly greenish base, creates a charming whole. A flower of intense delicacy and of chaste beauty. \$1.25 for 10; \$10 per 100.

**HER GRACE 4a.** A very beautiful daffodil. Beautiful overlapping, snow-white perianth with large ivory crown resting firmly against it. Its prominent characteristic is the exquisite carving of the crown's edge. A strong grower. The flower has much substance and the entire plant is of exhibition quality. \$2.75 for 10; \$25 per 100.



Typical Leedsii Daffodil

**RED SHADOW 3b.** A most attractive flower of bold appearance. The perianth is white with orange-red cup. It is unusually free-flowering and a strong and vigorous grower. Each, \$4.

**SUNRISE 3b.** A beautiful daffodil; perianth white with a broad primrose bar through the center of each petal; expanded and elegantly fluted crown, bright orange-yellow with fiery scarlet margin. \$1.25 for 10; \$10 per 100.

**SUNSTAR 3b.** A most attractive novelty. Creamy white, broad petaled perianth, segments slightly reflexed; flat yellow cup with broad orange margin; tall fine stem and neck, Poeticus habit; beautiful both in the garden and for exhibition. Each, \$2.

**YELLOW POPPY 3a.** A most attractive flower. Perianth is of softest yellow, cup of a brilliant orange. A most unusual variety lending itself on account of the graceful habit nicely for both the garden or the exhibition table. \$2.75 for 10; \$25 per 100.

**LORD KITCHENER 4a.** Flower of great size with very broad, flat, pure white perianth of firm substance; crown very large, of a delicate pale primrose, well open at the mouth and elegantly crimped at the brim. \$1.15 for 10; \$8.75 per 100.

**LOUIS CAPET 4a.** A dainty little flower of perfect conformation from whatever angle viewed; poised on tiptoe ready for a dance at the slightest breath of air; perianth white; trumpet light primrose, with golden anthers, and pale green shading to gold; foliage clean and upright, not too heavy; an ideal narcissus for naturalizing and for the rock garden; there is a mistaken idea that only low-priced varieties should be utilized for naturalizing; half a dozen bulbs of such new varieties as this one make an immediate show and will increase rapidly. \$2.25 for 10; \$20 per 100.

**MITYLENE 4a.** This tall enormous-flowered Leedsii has a snowy white perianth of perfect shape and fine substance. The cup is of the palest lemon-yellow, very flat and curved up slightly like a shallow saucer with little ridges in it. This very attractive novelty is both fine in the garden as well as the showroom. Each, \$2.

**NETTE O'MELVENY 4b.** Sure the "little people" must have been abroad frolicking in the moonlight when this fairy flower was born; a dancing daffodil with pure white perianth and a cup of clear lemon-yellow, with orange picotee. Splendid foliage, tall, graceful stem and good neck; in every way a delightful flower. \$1.75 for 10; \$15 per 100.

**SILVER STAR 4a.** Perfect broad-petaled star-shaped perianth of pure cream-white, with finely proportioned, wide mouthed trumpet of primrose, changing to cream white, just a shade deeper than the perianth; extra fine, and very free-flowering. \$2.25 for 10; \$20 per 100.

**TUNIS 4a.** A most attractive novelty. Broad, white overlapping perianth with broad, wide open large cup of softest primrose becoming with age overlaid with a sheen of gold. A very fine exhibition variety. Each, \$5.





Leedsii Narcissus Gertie Millar  
See Page 8



Double Narcissus Mary Copeland  
See Page 12



Barrii Narcissus Peggy  
See Page 7



Poeticus Narcissus Snowking  
See Page 11





Jonquil Hybrid Lady Hillington See Page 10



Poetaz Narcissus Glorious Variety See Page 10



Narcissus Triandrus Albus See Page 9



Narcissus Cyclamineus See Page 9



## DIVISION V.

### Triandrus and Triandrus Hybrids

Includes all varieties obviously containing *Narcissus triandrus* blood.

For grace and beauty they are unsurpassed. We recommend a situation partly shaded by trees, and if a little very fine dwarf grass seed is sown amongst them, the beauty of their flowers is enhanced. Once planted, they may remain undisturbed for years.

**AGNES HARVEY 5b.** A beautiful chalice-cupped hybrid; perianth snow-white, cup pure white sometimes flushed soft apricot; bears one to three blooms on a stem. \$1.75 for 10; \$15 per 100.

**MOONSHINE 5b.** Very attractive. This variety caused considerable attention at one of our recent exhibits. Perianth and cup creamy white, star-shaped. \$4.25 for 10; \$40 per 100.

**PEARLY QUEEN 5b.** 2 or 3 flowers to a stem; star-shaped cream-white perianth, with clear lemon-yellow short trumpet; distinct pearly sheen provides the name; drooping habit; free-flowering and a strong grower; A. M. 1930. \$2.75 for 10; \$25 per 100.

**MRS. ALFRED PEARSON 5b.** Dainty star-shaped flowers in generous clusters; white perianth and pale primrose cup. Excellent for the rock garden. \$2.25 for 10; \$20 per 100.

**QUEEN OF SPAIN 5a.** One of the most beautiful, distinct and graceful daffodils in cultivation and recommended for bedding, pot culture, naturalizing in woodlands, rock gardens, etc. The flowers vary slightly in size and sometimes in form and trumpet, but all are of uniform delicate canary-yellow with a gracefully reflexing perianth. Naturalized in the grass, under trees, this daffodil forms a delightful feature in the garden. \$2.85 for 10; \$26 per 100.

**ST. PATRICK 5a.** A beautiful novelty. Star-shaped, creamy yellow perianth with long fluted, dark yellow cup carried in clusters of three to five flowers to a stem. Each, \$1.

**THALIA 5b.** Often called the orchid-flowered daffodil. The beautiful pure white flowers are carried three or four to a stem and are most attractive for either indoor decoration or planting in the rock garden. Very attractive. \$3.75 for 10; \$35 per 100.

**TRIANDRUS ALBUS 5b.** An exquisitely beautiful little species, appropriately called the "Angel's Tears" Daffodil; it is of slender growth, and produces a cluster of elegant little creamy white flowers with globular cup and perianth reflexing as in the *Cyclamen*; height 7 inches. The bulbs should be left undisturbed to establish themselves. \$2.75 for 10; \$25 per 100.

**TRIANDRUS CALATHINUS 5b.** One of the most beautiful little daffodils in existence. The flowers, which are produced in drooping clusters of two or three, are snowy white, and more than twice the size of *Triandrus Albus*, with long goblet-shaped crown prettily fluted; the foliage has a curious habit of curling over; height 7 inches. For pots and the rock garden it is a perfect gem. This beautiful little daffodil thrives best in a mixture of leaf mould, heath soil and coarse sand, with

just a little bone meal added; no other manure should be given. The late Mr. Peter Barr collected this rare daffodil some years ago on one of the sea-swept Glenan Isles (off Brittany). Unfortunately it is no longer to be found there, the sea having washed away all trace of this little species. \$7.75 for 10; \$75 per 100.

**TRIANDRUS CONCOLOR (true) 5b.** Bearing clusters of dainty fragrant flowers of similar form to *Triandrus Albus*, but of a uniform soft creamy yellow, a very rare and beautiful little daffodil; height, 7 inches. \$5.75 for 10; \$55 per 100.

**TRIANDRUS PULCHELLUS 5b.** A very beautiful little variety; elegant clusters of flowers with primrose perianth and creamy white cup; height, 9 inches. \$4.50 for 10; \$42.50 per 100.

## DIVISION VI.

### Cyclamineus and Cyclamineus Hybrids

Includes all varieties obviously containing *Narcissus cyclamineus* blood. For typical variety see color plate.

**CYCLAMINEUS.** The Yellow *Cyclamen*-flowered daffodil. This beautiful little daffodil is the earliest of all and is a charming, artistic little flower of very distinct form; the trumpet is rich yellow, straight and tube-like, elegantly serrated at the mouth, while the perianth is reflexed as in a *Cyclamen*. A valuable little species for pot culture, edgings, rock-work, and to naturalize in grass and shady nooks, or at the water's edge; it delights in a dampish sandy peat soil and should be left undisturbed for years. Height, 6 inches. \$4.75 for 10; \$45 per 100.

**FEBRUARY GOLD.** Beautiful golden yellow, exquisite novelty, which, like the foregoing, aroused much interest during our exhibition. Very floriferous. \$2.25 for 10; \$20 per 100.

**MARCH SUNSHINE.** Smaller than February Gold and more adapted to rock garden planting. \$7.75 for 10; \$75 per 100.

## DIVISION VII.

### Jonquilla and Jonquil Hybrids

Includes all varieties containing *Narcissus Jonquilla* blood. For typical variety see color plate.

**BUTTERCUP.** Flower of very distinct handsome form borne on a long stem; color rich Buttercup-yellow, almost a self, with broad, stiff perianth very slightly reflexing and of the same length as the trumpet, which is straight and of great substance; has a delicate perfume; height, 21 inches. \$1.25 for 10; \$10 per 100.

**GENERAL PERSHING.** New type of jonquil hybrid; large as some of the moderately sized Ajax varieties; foliage is flat but very long and narrow, much more graceful than that of Ajax type, flower much more refined in form than the Giant Trumpets, 3½" in diameter, of purest jonquil-gold; trumpet just a shade deeper than the perianth; a lovely flower in every way and sure to become immensely popular, A. M. 1919. \$3 each.



**GOLDEN SCEPTRE.** Standard bearer of the new type of hybrid which has become so popular because it is so much more gracefully proportioned than the Giant Trumpet. A medium sized perfectly built flower of deep jonquil yellow, three inches or so in diameter, the perianth star-shaped, just a shade lighter in coloring than the trumpet, which is slightly rolled and flaring at the mouth like a miniature trumpet. The entire flower is of the greatest substance, keeping in perfect condition exceptionally long, both in the garden and when cut. The foliage is attractive and the flowers are produced on tall tapering stems; very vigorous in growth and a strong propagator. Golden Sceptre should merit a place in every garden. Late flowering. \$1 for 10; \$7.50 per 100.

**JONQUILLA SIMPLEX.** The true single sweet jonquil, of light elegant growth, bearing out of doors in early May charming clusters of numerous small rich yellow flowers of delicious scent. \$1.25 for 10; \$10 per 100.

**JONQUILLA FLORE-PLENO.** The true old double sweet jonquil produces in early May little heads of rich yellow double flowers, very fragrant and attractive for cutting. \$2.25 for 10; \$20 per 100.

**LADY HILLINGDON.** A fine companion for Golden Sceptre, blooming somewhat earlier; cluster-flowering type, well worth growing even if all the flowers came singly; perianth a clear butter-yellow with broad outer petals opening flat like those of a Trillium, with the narrow inner petals curving forward around the moderate sized shapely trumpet of deep jonquil-yellow, with anthers to match. A lovely flower in every

#### DIVISION VIII. POETAZ (Tazetta Hybrids)

Includes the new Poetaz varieties and the old Polyanthus or Bunch-flowered Narcissi. The plants are tall and vigorous growers, bearing heads of large well formed flowers, delightfully fragrant; they are much finer than the old Polyanthus Narcissi, and have the advantage of being much hardier.

**ADMIRATION.** Sulphur-yellow perianth; sulphur-yellow eye with scarlet-red border; beautiful in every way. \$1.75 for 10; \$15 per 100.

**CANALICULATUS.** A dainty little Polyanthus Narcissus from Mentone, suitable for sunny positions in the rock garden. It has narrow erect bluish green foliage and bears heads of three to four flowers with white perianth and globular golden cup, sweetly scented; height, 6 inches. \$2 for 10; \$17.50 per 100.

**CHEERFULNESS.** The double Elvira, a very pleasing double white Poetaz with good stem. A fine garden and show flower. \$1.75 for 10; \$15 per 100.

**ELVIRA.** Three to four large flowers of great substance, borne on long, graceful stem; broad white petals and a golden yellow cup, edged orange; delicately fragrant. Makes a splendid combination in the garden when planted among the earliest Darwin Tulips or massed on a bank with Tulipa Clusiana. \$1 for 10; \$7.50 per 100.



Typical Poetaz Daffodil

way borne gracefully on a very tall stem above clean attractive foliage; ideal for cutting as well as for garden display and a strong propagator. Every beholder falls in love with Lady Hillingdon. \$8.25 for 10; \$80 per 100.

**ODORUS RUGULOSUS.** Bearing rich yellow fragrant flowers (two to four on a stem) with broad imbricated perianth and straight wrinkled cup, foliage erect and rush-like; a fine showy variety, very effective when massed in beds and borders, and valuable for cutting. A tiny golden daffodil. \$.90 for 10; \$6.50 per 100.

**ORANGE QUEEN.** A very striking variety, 2 to 3 flowers on a stem, color intense golden orange with cup prettily fluted. Delightful jonquil fragrance. The flowers are produced in greatest profusion on wiry stems about level with the tops of the strong but not coarse foliage; truly a daffodil for every garden and the gayest of the lot, large or small, for cutting, display or exhibiting. \$1.25 for 10; \$10 per 100.

**TULLUS HOSTILLIUS.** Of the jonquil-yellow trumpet type; strong growing but less than a foot high; the flower is of remarkable substance, lasting exceptionally long in the garden or when cut; an ideal daffodil for informal use. Extra heavy bulbs. \$1.50 for 10; \$12.50 per 100.

**WHITE WEDGWOOD.** A dainty and charming flower borne on a tall stem; starry perianth of cream-white, with a trumpet of a pale primrose; beautiful for cutting and effective in groups in front of the daffodil border, among other varieties. \$1.25 each.

**GLORIOUS.** Tall flower delightfully informal in habit, perianth Poeticus-white with orange eye, edged red; good for semi-shade; very early, F.C.C. 1927. Each, \$2.

**GOLDEN PERFECTION.** A perfect perianth with wide overlapping segments, deep citron-yellow with mica sheen and cup of pure gold perfectly proportioned to balance of flower; calyx grey-green flecked with gold; a giant Poetaz unique in its class, F.C.C. 1926. Each, \$6.

**KLONDIKE.** One of the finest of the yellow Poetaz. Perianth is of rich yellow with a slightly darker cup. \$1.15 for 10; \$9 per 100.

**LAURENS KOSTER.** Very handsome variety; perianth white with deep yellow cup. \$.90 for 10; \$6.50 per 100.

**MEDUSA.** A very decorative variety, bearing two to three flowers on a stem, broad pure white perianth, open fluted crown of a fiery orange-scarlet. A fine exhibition variety. \$6.75 for 10; \$65 per 100.

**ORANGE CUP.** For strong mass effects or individual high lights. This daffodil lends itself especially for naturalizing effect. Yellow perianth with orange cup. \$.90 for 10; \$6.50 per 100.

**YOLANDE.** Most attractive flower, large silvery white perianth with bright yellow cup. Very handsome and free-flowering. A fine exhibition variety. \$1.75 for 10; \$15 per 100.



**DIVISION IX. POETICUS  
VARIETIES**

(The True Poet's Narcissi)

These "Poet's Daffodils" or Narcissi have snow-white petals, and a small flattened eye or crown, yellow or lemon, edged more or less deeply with scarlet crimson, and sometimes almost all scarlet. All are sweetly scented. Poet's Narcissi are thirsty souls. They are thankful for a little shade.

**ACTEA.** The best of the Poeticus types. Very large, pure white perianth with deep orange cup. Very fine substance. A most beautiful exhibition flower. Each, \$1.

**EDWINA.** Purest white perianth, broad and overlapping petals, very flat cup, yellow-edged red. Fine form and substance, highly recommended, A. M. 1926. \$3.25 for 10; \$30 per 100.

**GLORY OF LISSE (Improved).** The improved Poeticus Ornatus, superior in shape, substance and color. Large, snow-white perianth; cup yellow, rimmed orange. \$1.40 for 10; \$11.50 per 100.



Typical Poeticus Daffodil

**HORACE.** Most beautiful snow-white perianth; dark red cup. \$1.25 for 10; \$10 per 100.

**ORNATUS MAXIMUS.** Extremely broad overlapping petals, recurving from typical pheasant's eye cup; unsurpassed for naturalizing. Planting drifts of these in sunny situations, others in semi-shade and again other groups in shade, you will have the enjoyment of these fine Poet's daffodils for nearly six weeks. \$1.25 for 10; \$10 per 100.

**RECURVUS (The Old Pheasant's Eye).** Pure white perianth; cup deep orange-red. The best for massing and naturalizing. Much later than Ornatus. \$0.75 for 10; \$5 per 100.

**SNOWKING.** This variety is indeed well named. Glistening white perianth, overlapping, with exceptionally broad petals; very flat cup with broad orange margin. Outstanding amongst the newest Poeticus varieties; tall grower with good neck. Each, \$3.



At "Paradou"



## DIVISION X. DOUBLE VARIETIES

**MARY COPELAND.** One of the famous varieties of the new semi-double type, this has been termed the most striking double in cultivation; the longer petals are pure cream with a golden ray down the center, interspersed with shorter petals of lemon and brilliant orange, giving a three color effect; unsurpassed for the garden or the show bench. Very beautiful Gardenia-shaped flower. Each, \$3.

**SNOWSPRITE.** A double Leedsii; flowers borne on tall stems; pure white, interspersed with very light lemon; very late. \$2 for 10; \$17.50 per 100.

**TEXAS.** A very fine double. Tall growing and of fine form. Color is a pale yellow interspersed with brilliant orange. A fine show variety. Each, \$4.

**THE PEARL.** Nice flower; not too double, creamy white, interspersed with sulphur-yellow, deeper at the center, very charming. \$1 for 10; \$7.50 per 100.

**TWINK.** Very attractive flower carried on tall strong stem, artistically formed. This most unusual variety, always standing upright, is semi double and of a delightful combination of creamy yellow and soft orange. Very unique. \$2.75 for 10; \$25 per 100.

### DOUBLE POETICUS

(The Gardenia-flowered, sweet-scented Narcissi)

**ALBUS PLENUS ODORATUS** (Double white Poeticus). Large, double, snowy white, sweet-scented, Gardenia-like blossoms; much prized for cutting. To obtain fine handsome flowers this Narcissus should be planted early in a good, deep, cool soil, not too dry. Only a percentage of the bulbs of this interesting variety will flower the first season after planting. \$1 for 10; \$7.50 per 100.



Typical Double Daffodil

## DIVISION XI.

Various.

Includes all other species not covered in preceding Divisions.

**Other Species and Hybrids of the Lovely Miniature Daffodils.**

For rockwork, edgings and small beds, these beautiful little daffodils are most charming.

**BULBOCODIUM CITRINUS** (Large Sulphur Hoop Petticoat).

Very beautiful pale citron-yellow, 6 to 8 inches high; delights in a dampish, sandy, peat soil. They should be left undisturbed to establish themselves. \$2.50 for 10; \$22.50 per 100.

**BULBOCODIUM CONSPICUUS.** Flowers rich golden yellow, of hoop petticoat form and rush-like foliage; height, 6 inches. Prefers a dampish, sandy peat soil. \$1.55 for 10; \$13 per 100.

**BULBOCODIUM MONOPHYLLUS** or *clusii*, the white "Hoop Petticoat," native of N. Africa, producing little snowy white flowers of exquisite beauty; charming in the rock garden or may be grown in pots in a cold frame or cool room; as soon as signs of growth are seen give water freely; height, 6 inches. On no account should manure be given. \$2.85 for 10; \$26 per 100.

**JUNCIFOLIUS.** The miniature rush-leaved daffodil, a charming and elegant species for pots or select spots in the rock garden; it has small rich yellow flowers rather smaller than a jonquil with a dainty little flattish crown, height, 3 to 4 inches, delicately fragrant; a native of the Pyrénées. \$6.25 for 10; \$60 per 100.

**SEROTINUS.** A very rare little narcissus producing in October, on slender stems, miniature star-shaped fragrant flowers with silvery white perianth and minute golden-yellow cup, sometimes two or three flowers on a stem; height, 10 inches. Plant in a warm spot on rockwork and lightly cover during winter, or grow in pots in a cold frame. Each, \$1.75; \$15 for 10.

## THE MINIATURE DAFFODILS

*Bulbocodium citrinus*, see page 12.  
*Bulbocodium conspicuus*, see page 12.  
*Bulbocodium monophyllum*, see page 12.  
*Canaliculatus*, see page 10.  
*Cyclamineus*, see page 9.  
*February Gold*, see page 9.  
*Agnes Harvey*, see page 9.  
*Jonquilla flore pleno*, see page 10.  
*Jonquilla simplex*, see page 10.  
*Juncifolius*, see page 12.  
*March Sunshine*, see page 9.  
*W. P. Milner*, see page 4.  
*Minimus*, see page 3.  
*Minor*, see page 3.

*Moonshine*, see page 9.  
*Moschatus of Haworth*, see page 4.  
*Mrs. Alfred Pearson*, see page 9.  
*Nanus*, see page 3.  
*Orange Queen*, see page 10.  
*Pearly Queen*, see page 9.  
*Queen of Spain*, see page 9.  
*Serotinus*, see page 12.  
*Thalia*, see page 9.  
*Triandrus albus*, see page 9.  
*Triandrus calathinus*, see page 9.  
*Triandrus concolor*, see page 9.  
*Triandrus pulchellus*, see page 9.





Darwin Tulip King George V  
See Page 19



Breeder Tulip Lucifer  
See Page 14



Hybrid Tulip Jeanne Désor  
See Page 16



Breeder Tulip Indian Chief  
See Page 13





Darwin Tulip Princess Mary See Page 20



Breeder Tulip Roi Soleil See Page 14



Hybrid Tulip Dillenburg See Page 13



Darwin Tulip Venus See Page 21



# Breeder Tulips

Most garden Tulips begin life as self-colored flowers. After a time the coloring matter gets broken up into stripes and blotches. Before this change takes place, they are known as "Breeder" Tulips.

They flower approximately at the same time as the Cottage and Darwin Tulips, during the month of May, excepting in southern sections where they bloom in April.

These aristocrats of the Tulip family, with their immense blooms, borne on strong, stiff stems, frequently exceeding

a height of forty inches, have become, of recent years, the most sought-after of all the Tulips.

The Rembrandtesque tone in their deep coloring and the artistic blending of shades as well as the great possibilities offered in combinations of color, have made them especially valuable to the critical garden enthusiast.

The following list contains all of the most beautiful, most fascinating sorts—plant the rarest in small groupings, the better known sorts in extensive plantings.

**BACCHUS.** Long ago the bloom-like effect of color of the Early Tulip, Couleur Cardinal, made a great impression on those who look at tulips with an eye to texture and color: here is the richest of violet-blue tulips, Bacchus, with that same dusky bloom on its outer petals, that grape-like bloom. The flower is held very straight at the top of a two and one-half foot stem; the beautiful tone of purple makes it especially nice to use with sky-blue spring flowers, and the suggestion of *Anchusa myosotidiflora* is given here as a companion or foreground for this tulip. Height, 33 inches. \$0.95 for 10; \$7 per 100.

**BRONZE QUEEN.** This flower carries one of those subtle blendings of deep yellow and brown with a touch of rose in it which only belongs to the great Hybrids of today in tulips. It has a shadowy beauty of its own, is very tall, has a flower not especially large but very distinct, and could be used most effectively in drifts with the familiar and glorious Louis XIV. Height, 28 inches. \$0.90 for 10; \$6.50 per 100.

**CARDINAL MANNING.** Very large, egg-shaped flower; bishop's purple, flushed rosy bronze, changing to an almost pure orange at the extreme edges of the petals, the base is tinged yellow; filaments blue at apex. Height, 34 inches. \$0.90 for 10; \$6.50 per 100.

**CHERBOURG.** In this tulip are seen first a deep golden yellow, growing stronger toward the edges of the petals, and then a charming flush of terra-cotta along the center of each petal outside. The resultant color is extremely interesting and as the tulip itself is of beautiful rounding form, the petals smoothly overlapping one another, and the whole well held on a most capable and graceful stem, this is a tulip which should be in great demand for various purposes. Nothing more delightful than plantings of Wallflowers below Cherbourg could be imagined for spring; but pale Munstead Primroses would answer too. Height, 32 inches. If ordered with other tulips, \$2.10 for 10; \$18.50 per 100.

**COPERNICUS.** A warm-toned coppery-bronze variety with a soft rose bloom on the exterior of the petals, a wood-brown interior, a yellow base and sable anthers. This is one of the best of the so-called "brown" tulips and makes a fine effect with *Cheiranthus allionii* and brown Pansies. A splendid large flower. Height, 27 inches. \$0.95 for 10; \$7.25 per 100.

**CORIDION.** A very distinct tulip. Clear yellow, overlaid with stripe of lilac through center of petals. The best in this color class. Height, 29 inches. \$1.05 for 10; \$8 per 100.

**DILLENBURG.** A very beautiful tulip of a glorious salmon-orange. Flower is large, of elegant loose shape, borne on a tall stem. This is the best variety in this color group. Height, 32 inches. \$1.40 for 10; \$11.50 per 100.

**DON PEDRO.** Coffee-brown on a cadmium-yellow ground, interior dark reddish mahogany, yellowish base streaked olive, filaments olive. A beautiful, large fragrant flower. Combines wonderfully with lighter varieties. Height, 28 inches. \$0.95 for 10; \$7 per 100.

**GARIBALDI.** Long flower of fine form on tall stem; pale lilac-bronze with pale yellow border; a pale form of Bronze Queen, with a bluish tinge. Combines effectively with Velvet King and Louis XIV. Height, 32 inches. \$1.20 for 10; \$9.50 per 100.

**GODET PARFAIT.** Like a fine Damson Plum in color and in texture, a charming tulip of great richness and nice habit of growth. Its slender stem permits it to bend ever so little, a pleasant variety in these late tulips where erectness is counted such a virtue, and its wondrous bloom and rich deep reddish purple color touched with feathers of brownish black which are almost indistinguishable in the darkness of the flower, make it exceedingly distinguished. The outside of the flower is a duller purple than the inside, which is of an incomparable richness. This tulip is one to group with other violets, lavenders and bronzes thus securing a rich effect in the shaded border. Height, 30 inches. \$1 for 10; \$7.50 per 100.

**GOLDFINCH.** Well formed, large, pointed flower on tall strong stem. Golden chestnut, interior mahogany-brown, shaded golden brown, yellow base streaked olive. Very fine. Height, 30 inches. \$0.95 for 10; \$7 per 100.

**HUCHTENBURG.** Exceedingly large flower on a tall stem, of very good form and substance. This beautiful tulip is of bluish lilac color flushed with chestnut-red. It is margined with brownish gold and has black anthers. Height, 36 inches. \$2.65 for 10; \$24 per 100.

**INDIAN CHIEF.** Perhaps the most artistic of all Breeder Tulips; a flower of enormous size carried on a very tall stiff stem. Of glorious coloring and in every way desirable for every purpose. The beautiful intriguing color is of an Indian-brown, flushed coppery brown; a very effective dark, wood-brown tulip with a burnished metallic sheen and illusive rose-colored lights. One of the



handsomest of the brown Breeders standing on a stem 38 inches high. "Indian Chief" stands head and shoulders above any other tulip in the garden. I would not be without it. A magnificent effect may be obtained by planting a mass of this splendid variety above a bed of brown Pansies. In order to make "Indian Chief" better known in all gardens, we offer our usual fine quality bulbs at a special price, provided it is purchased with other varieties. \$1.45 for 10; \$12 per 100.

**JAMES A. MacDONALD.** A very beautiful tulip of good size and substance. The large flowers show the inside of the cup an orange flame shading to a lighter orange towards the edge of petals. The outside is orange flushed with salmon and mauve. A fine tulip named in honor of a fine man. Height, 28 inches. \$1.50 for 10; \$12.50 per 100.

**JESSEY.** A most attractive tulip of rather deep, clear coffee-brown, flushed bronzy-red with yellow base. Very large and strong flower carried on a tall erect stem. Height 36 inches. \$7.25 for 10; \$70 per 100.

**LOUIS XIV.** The vigorous plant has a large, goblet-shaped flower, which possesses a most artistic blending of tones of indescribable beauty, deliciously scented. Dark bluish violet with tawny margin flushed golden brown and dull blue base with a yellow star, shaded bronze.

A mass planting of this unique tulip gives a comforting feeling of repose so required in the garden.

Visualize a large border of these giants standing above masses of Forget-me-nots or yellow Pansies; or the beautiful effect that can be obtained by planting them with Garibaldi, Bacchus, Gold Finch and Darwin Tulip Duchess of Hohenberg.

We have exhibited flowers 42 inches high, measuring from the top of the bulb to the top of the flower, while the average height is 34 inches. \$0.95 for 10; \$7 per 100.

**LUCIFER.** Gorgeous large flower on a tall stem; dark orange with rosy bloom, interior scarlet-orange with more or less circular yellow base, ringed with pale olive filaments. Height, 28 inches. \$1.10 for 10; \$8.50 per 100.

**MAHONY KING.** A very beautiful tulip presenting a unique coloration of deep brown overlaid rosy-purple. It attracted considerable attention during a recent exhibition. \$4 for 10; \$37.50 per 100.

**MARÉCHAL VICTOR.** A Breeder of unusual interest in color, bronze with rosy purple flush, and a beautiful bloom over all the outer petals. The effect of a dusky texture is marked in this tulip, for which reason it is uncommonly valuable for cutting. The stem is long, and the tulip well held at its top. Height, 30 inches. \$1.50 for 10; \$12.50 per 100.

**MRS. J. RAMSEY HUNT (Eleanor Pratt).** A very beautiful flower of fine form and clear coloring. An exceedingly choice variety selected by our Mr. John T. Scheepers to do honor to a charming girl. The bloom is immense in size of Breeder type and of a lovely shade of clearest purple, carried on tall erect stem. Rising out of a mass of orange and purple Pansies, or a bronzy Prim-

rose as seen in America's most beautiful gardens, "Weliny," this fine tulip would create a picture lovely indeed. Height, 32 inches. \$2.50 for 10; \$22.50 per 100.

**MRS. BEECHER STOWE.** A fine deep purple, of good form and splendid stem, very deep and uniform in color. One of those with the velvety bloom on the outer petals which gives a tulip so rich an appearance either in the garden or in the house. Height, 30 inches. \$1.10 for 10; \$8.50 per 100.

**MRS. HAROLD BROWN.** This beautiful Breeder Tulip presents a most pleasing combination of orange, brown and yellow. It is a color most difficult to describe. A truly magnificent variety. Height, 50 inches. If ordered with other tulips, \$1.40 for 10; \$11.50 per 100.

**NEWTON.** The tallest of all late-flowering varieties. Rich dark purple with plum bloom on outer petals; admirable amongst Arabis or Forget-me-nots. A magnificent regal tulip, a grouping of which creates an imposing picture. Height, 39 inches. \$3.75 for 10; \$35 per 100.

**ORANGE GLORY.** Beautiful flower of a light terracotta-orange. Flower is cup-shaped and of good substance insuring long lasting qualities. A great favorite. Height, 28 inches. \$1.50 for 10; \$12.50 per 100.

**PANORAMA (Fairy).** This tulip is remarkable for its splendid orange-scarlet color, its overlying bluish bloom, its amazing olive-green base, yellow pistil and dull violet anthers. Whether open or partly closed, the flower is beautiful and with the latest possible daffodils, the effect in mass planting would be very fine. Height, 27 inches, \$0.90 for 10; \$6.50 per 100.

**PRINCE ALBERT.** Glowing mahogany-brown, shaded dull bronze, green base. Graciously formed flower. In the petals we find a rich weave of Indian-brown, buff and yellow ochre with cadmium-yellow suggestions. Splendid variety for the border. Height, 30 inches. \$0.90 for 10; \$6.50 per 100.

**RAYON d'OR.** Large, well formed flower of great substance, carried on a strong stem. The color is a bright golden bronze, edged bronzy yellow with olive center. A fine exhibition variety. Height, 28 inches. \$1.40 for 10; \$11.50 per 100.

**ROI SOLEIL.** Here is a striking beauty! Dark violet-blue and shades of bronze are wonderfully combined. Fine, large, well formed flower. Plant with yellow Pansies or light-toned Wallflowers. Height, 32 inches. \$1 for 10; \$7.50 per 100.

**TANTALUS.** An outstanding exhibition tulip. The very large cup-shaped flowers are of a light cadmium-yellow, overlaid with dull slate-violet; base is dark yellow with black anthers. Height, 30 inches. \$2.85 for 10; \$26 per 100.

**VELVET KING.** An immense flower on an extra strong stem. Its robust growth makes it one of the showiest and most conspicuous; of fine cup-shaped form; bright, dark, royal-purple, small, white, sharply defined base. A giant. Magnificent planted in masses of yellow Pansies, or dotted through a large planting of the fine pale heliotrope Darwin Tulip Duchess of Hohenberg. Combines beautifully with Breeder Garibaldi.



Superb above a floor of the darkest purple Pansies. Height, 31 inches. \$0.95 for 10; \$7.25 per 100.

**WILLIAM THE SILENT.** What a marvel is this among the purple Breeder Tulips! Its widely opened cup of warm, reddish purple, its generally superb appearance, the fine texture of its petals make it an outstanding purple tulip, and one de-

serving its illustrious name. The flower is carried on a strong tall stem. With its striking creamy base outlined with blue, and its purple velvet anthers, it is a variety to adorn the state-liest garden. A beautiful combination may be had by planting Cottage Tulip Mayflower or a similar shade amongst, or in front of, William the Silent. Height, 30 inches: \$1.40 for 10; \$11.50 per 100.

## Cottage and Hybrid Tulips

Cottage tulips are varieties which have been found, for the most part, sequestered in the old cottage gardens of the British Isles. Hybrid Tulips are the results of crosses between the Cottage, Breeder and Darwin Tulips. They flower approximately at the same time as the Breeder and Darwin Tulips, during the month of May, with exception of the far southern section, where they bloom in April. They are often marked by long, rather pointed petals and thin, wiry stems.

**ALBINO.** A charming pure white tulip, large well formed splendid bloom on strong, tall stem. One of the very few really good white varieties of May-flowering tulips. Height, 26 inches. \$0.95 for 10; \$7 per 100.

**AMBROSIA.** A rich and luscious flower of pale terra-cotta, with amber lights and a rosy glow throughout, this is a tulip that commands delighted attention wherever seen. It sets one to marveling at what has been done in hybridizing. Ambrosia is a flower of great size and rather slender form, held at the top of a very long fine stem. For cutting or garden use it is nothing less than superb, and the variety of color in the flower itself will be sufficient to suggest endless lovely combinations of it with other spring flowers. It is the artist's tulip. To its other charms it adds that of delicious fragrance. Long lasting and especially fine for cutting. Plant or cut this new beauty with Darwin Tulip Faust, its perfect foil. Height, 30 inches. \$0.95 for 10; \$7 per 100.

**ARETHUSA.** A charming two-tone tulip. A gloriously large and freely opened cup with broad petals slightly reflexing, of unusual grace and beauty. The artistically formed flower is of a translucent light chrome-yellow. There is hardly in the world a tint just like it, contrasting perfectly with the green of its leaf adding to its other charms an exquisite spring-like fragrance, all that makes spring intoxicating to sense and spirit. Massed over brown Wallflowers or rising out of drifts of trembling Forget-me-nots, or in combination with Bizarre Tulip Zebra, they will create unforgettable pictures. It is also especially lovely among pale Violas, or planted in a bed above English Daisies. Fine for cutting, a most important acquisition. Height, 25 inches. \$1.05 for 10, \$8 per 100.

**AVIS KENNICOTT.** Very large, chrome-yellow flower, with striking black base and anthers. Sometimes appears without this black base. Effective grown near Iris Kochii, planted amongst blue Myosotis or Mertensia virginica, or have them rise in quantity from a solid bed of white Pansies or Arabis the long flower held up straight on a

All the tulips offered in our list are beautiful, presenting a great variety in form and coloring. They are prized for cutting because of their long stems and graceful habit, and are especially adaptable for permanent, hardy flower borders where they should be freely planted in large clumps and in masses.

Plant six inches deep and not less than five inches apart. In planting in clumps, set the bulbs about three inches apart. To insure proper drainage, sand, to the depth of an inch, should be put underneath the bulb.

strong stem. For magnificent effect great masses of this variety should be planted. Height, 27 inches. \$0.95 for 10; \$7 per 100.

**BARBARA PRATT.** One of the most remarkably beautiful and brilliant tulips of recent introduction. The color is a most radiant cherry-pink with an extraordinary effect of golden light shining through it. The flower is long and exquisitely modeled and gives forth a delicious fragrance. It does not fade in the sun and lasts in perfection for a much longer period than most tulips. A luminous and beautiful flower, worthy of a fine name, undoubtedly destined for a great future. Height, 36 inches. \$2.10 for 10; \$18.50 per 100.

**BUFF BEAUTY.** This unusually interesting and beautiful tulip is the result of a cross between a Darwin and a Breeder. It has the trig cupped form of the Darwins with strong erect stem of medium length, but the color of the flower is in the best tradition of the Cottage type, a rich glowing blend of coral-rose and dark amber with a canary base and buff anthers. The color is so delicate, its flushes so lovely, the soft contrasts and glow are so remarkable that one has difficulty giving a restrained description of its charms. It is richly fragrant and would make a superb bed above brown velvet Wallflowers. Height, 25 inches. \$1.05 for 10; \$8 per 100.

**CARRARA.** This is a fair pale tulip, which has already created by its beauty a sensation at the great flower shows. It is as round as the breast of a swan; as purely white as the marble from which it takes its name, and is in all ways an enchanting tulip. A most entrancing and delicate flower. It has been extremely scarce, now available at a more reasonable price. \$1.20 for 10; \$9.50 per 100.

**DIDO.** Here is a perfect flower bewitching in its loveliness. Unspeakably glorious in its extraordinarily luminous light effects and its long and slender form, poised firmly at the top of its tall straight stem that it must strike everyone as among the wonders of the world of tulips. Its color is deep rich pink or light Jasper red, with Lambert topaz lights and amber edges to the



petals, the base and anthers pale corn-yellow. A lovely ensemble and warmly fragrant. It has no peer as an unusually magnificent tulip, the sweet fragrance adding much to the value of the flower. Where a bright color effect is needed it is superb. Height, 32 inches. \$0.85 for 10; \$6 per 100.

**GEISHA.** A most attractive novelty. Flowers are very large of soft greyish lilac on outside with a delicate bright purplish violet on inside. Height 26 inches. \$1.50 for 10; \$12.50 per 100.

**GOLDEN AGE.** This is one of the most beautiful of all yellow Hybrids of recent introduction. The large flower of a bright golden orange is carried on tall stiff stem. A valuable addition to your collection; may we suggest that you try a few of these to put a clump here and there in your border plantings? Height, 28 inches. \$5 for 10; \$47.50 per 100.

**GOLDEN STATUE.** A pale yellow tulip of tremendous size, oval-shaped flower with tall stiff stem. The inner petals are pale yellow, the outer petals are darker. This is one of the loveliest of the late yellow tulips. A fine exhibition variety. \$9.25 for 10; \$90 per 100.

**HAMMER HALES.** Very long flower; remarkable blending of bronze, old-rose, apricot, and fawn. Beautiful flower of marked distinction. Height, 26 inches. \$0.95 for 10; \$7 per 100.

**HENRY CORREVON.** A very attractive novelty of a very brilliant red self color. Refined, tho' strong grower. Very effective against an ever-green background. Height, 28 inches. \$2.10 for 10; \$18.50 per 100.

**INGLESCOMBE PINK.** While not a new tulip, this is, and will always be, a favorite variety for its beautiful warm pink flushed with amber, and its fine rather short cup. It is a perfect flower to grow above Forget-me-nots. Its popularity has always been great. Height, 24 inches. \$0.80 for 10; \$5.50 per 100.

**INGLESCOMBE YELLOW.** Perfectly formed, beautiful flower, carried on a sturdy stem. Very good canary-yellow; occasionally shows a crimson edge. Plant with Forget-me-nots or among sky-blue Flax. Height, 21 inches. \$0.80 for 10; \$5.50 per 100.

**JANE ALDRED.** A very beautiful novelty. Flowers are of great size of a uniform creamy yellow. A very strong and vigorous grower. A clump rising from a ground cover of Phlox Laphami is very effective. \$2.30 for 10; \$20.50 per 100.

**JEANNE DÉSOR.** This very beautifully formed Hybrid is the result of a cross between Darwin and Cottage Tulips. A long, large flower much resembling the Darwin type, is carried erect on a strong, tall stem. The color is very striking, being of a deep orange-yellow with a broad border of scarlet toward the edges of the petals. A late bloomer, it has increasing value as a novelty that should be carefully considered when adding to your collection for the border. Height, 28 inches. \$1.30 for 10; \$10.50 per 100.

**JOAN OF ARC.** A fine tulip named in honor of the famous heroine. Long flower, rather loose but very graceful and attractive. It is a beautiful

Sunflower-yellow with yellow base and anthers. Height, 25 inches. \$1.50 for 10; \$12.50 per 100.

**JOHN RUSKIN.** Of the many new tulips, few exceed this older one in luscious color and charming form. The flower is long and egg-shaped. The color is a superb blend of rose and amber with Fuchsia and tawny suffusions and a canary-yellow and olive base. Its best use is with the Forget-me-not near, though in any spot where the Myrtle's lavender-blue flowers abound, this Tulip would be charming rising from among them, or above apricot Violas. Very fragrant. Height, 18 inches. \$0.85 for 10; \$6 per 100.

**LEDA.** One of the most beautiful pink varieties in existence. An enchanting, vivid pink, paler at the edges; a vivaceous flower filling innumerable uses in the garden, of a coloring which attracts immediate attention. While it is a Hybrid, the child of a cross between Darwin and Cottage Tulips, it bears fine Darwin shape but embodying the finest qualities of both. It is an exquisite thing having all the fine points that make for a good tulip. The large, fine, cup-shaped flower stands on a strong, tall, straight stem and has exceptional lasting qualities. Makes a lovely bed above blue Pansies. Height, 30 inches, \$0.90 for 10; \$6.50 per 100.

**LEMON QUEEN.** A splendid tulip of fine form and substance. Strong and vigorous grower. In color it is a pure soft yellow. Height, 28 inches. \$1.05 for 10; \$8 per 100.

**LINDBERGH.** Truly a great tulip named in honor of a great American. The color is a distinct golden yellow. Flowers are of fine substance and carried on erect tall stem. Height 28 inches. \$1.20 for 10; \$9.50 per 100.

**MADAME BUYSSENS.** A tulip of noble proportions, very fine clear yellow; large, gracefully formed flower on strong stem. An exceptionally fine yellow tulip of outstanding merit. Height, 26 inches. \$3.25 for 10; \$30 per 100.

**MAGNOLIA.** An exquisite novelty of a creamy white with cherry flushes. A strong and vigorous grower, very large flower. A fine exhibition tulip. Height, 28 inches. \$1.85 for 10; \$16 per 100.

**MARJORIE BOWEN.** This extraordinary variety displays unusual coloring. The beautifully formed flower, which is large and carried on a strong tall stem, is of a shade of buff and salmon which passes into deep rose-pink with salmon shades; the center is white. Extremely scarce. Height, 26 inches. \$2.50 for 10; \$22.50 per 100.

**MAYFLOWER.** This is an extraordinary tulip, being the result of a cross between Gesneriana spathulata and the Botanical Tulip Greigii. The largest flower of all tulips, reminding one of an Oriental Poppy. The color is a fiery scarlet rather difficult to describe; a "spiritual" scarlet; the base is blue. One of the earliest flowering varieties. A very wonderful tulip which is still scarce. Height, 30 inches. \$3.75 for 10; \$35 per 100.

**MERCURIUS.** A true Darwin-type tulip of a pleasing citron-yellow shade. The flowers are carried on tall strong stems. This fine tulip will find a deserving place, where a soft yellow among Darwin Tulips of even height is desired. Height, 28 inches. \$1.40 for 10; \$11.50 per 100.





Darwin Tulip La France

See Page 20



Hybrid Tulip Magnolia

See Page 17



Darwin Tulip Duchess of Hohenberg

See Page 19



Breeder Tulip Huchtenburg

See Page 13





Lily-Flowering Tulip Elegans Alba  
See Page 22



Hybrid Tulip Ambrosia  
See Page 15



Hybrid Tulip Dido  
See Page 15



Breeder Tulip William The Silent  
See Page 15



**MONGOLIA.** This we consider one of the best of the recent introductions; it is one of the largest deep yellow varieties in existence. The flowers are egg-shaped, of great substance and carried on tall strong stems. While the yellow color of this beauty is rather deep, it has a tone of softness, making it extremely desirable. Indeed an outstanding variety. Height, 32 inches. \$9.25 for 10; \$90 per 100.

**MOONLIGHT.** The best pale yellow tulip; a lovely color and the flower is very long and of fine oval shape. Beautiful in the borders among early Irises, Bleeding Hearts and Nepeta mussini. Height, 25 inches. \$0.85 for 10; \$6 per 100.

**MRS. F. E. DIXON.** This very beautiful tulip makes a deep impression upon all who see it. Of immense size, yet artistic in the extreme, lovely in form, the softly colored, sulphury yellow bloom is carried upright on strong stiff stem. The petals have a waxlike texture and are of a substance rarely met with. An excellent variety in every way, undoubtedly the finest of the Cottage Hybrids. A beautiful picture might be made by planting this beauty amongst Forget-me-nots or with light blue and white Pansies or with a background of Lilac President Fallières. Many happy combinations may be made with this wonderful tulip. Height, 28 inches. As original introducers of this choice variety we are now in a position to offer it for the first time in limited quantity at a more reasonable price, if purchased with other tulips. \$3.25 for 10; \$30 per 100.

**MRS. JOHN T. SCHEEPERS.** The first impression one gets from this tulip is its majestic beauty. Elegantly formed, oval-shaped, large flowers of deep golden yellow, very clear of color, are carried on tall, thick, sturdy stems with clear green foliage that in itself commands immediate attention. The entire plant is of the strongest development. The blooms are enormous with fleshy, wholesome petals of unsurpassed substance and of fine lasting quality. A real giant among tulips. This magnificent variety is recognized by experts as the choicest yellow tulip for garden decoration, one that especially suits the American climate. Awarded highest honors whenever exhibited. Height 30 inches. We offer a limited number of bulbs at \$1 each; \$9.50 for 10; \$92.50 per 100.

**MRS. MOON.** One of the best tall yellow tulips. Beautiful vase-shaped flowers, carried on sturdy stems. Splendid among the rich purple Irises of the Germanica section. Height, 25 inches. \$0.90 for 10; \$6.50 per 100.

**MR. WENTHOLT.** A lovely large deep yellow tulip of perfect form. One of the most attractively colored tulips. Strong and vigorous grower. Height 27 inches. \$4.50 for 10; \$42.50 per 100.

**OSTARA.** A most beautiful novelty. Very large flowers with long reflexed petals of a very attractive dull orange. Height, 26 inches. \$1.50 for 10; \$12.50 per 100.

**PERSEUS.** A very fine tulip of a most attractive light orange. A large flower of Darwin shape and carried on a strong stem. Height, 28 inches. \$2.10 for 10; \$18.50 per 100.

**REFULGENCE.** A most attractive tulip of a warm orange. Similar in color to Breeder Tulip Lucifer, but much larger exceptionally beautiful variety. A very strong and vigorous grower. This wonderful flower should be in every worthwhile collection. Have a large clump of these rise out of a bank of Forget-me-nots, planted amongst Cheiranthus allionii or above yellow and brown Pansies. Height, 30 inches. \$3.25 for 10; \$30 per 100.

**ROSABELLA.** There is hardly a tulip anywhere to touch this flower for a certain soft charm. Its color may be described as a delicious pink, warm, delicate and sweet, as lovely as a pink rose bud, or the colors of a sea-shell, tender pink with a blush of deeper color suffusing each petal, and smart black anthers. Not so tall as some of its enterprising contemporaries, yet it carries itself nicely on a stem of twenty inches or so, and would give particular grace and beauty to a spot where taller and dwarfer Forget-me-nots spread themselves below. Makes an engaging offset with Phlox divaricata and a pale yellow intermediate Iris. It is difficult to use measured terms as one looks at this tulip and compares it with others. This is a flower of ineffable charm. Rosabella must never be grown near any other tulip, or too near it. It should have a spot of its own, a place given to its own loveliness. One of the most desirable tulips both in the garden and for cutting, with a fine fragrance. Height, 27 inches. \$1.10 for 10; \$8.50 per 100.

**VESTA.** A superb pale primrose-yellow flower of great size and splendid substance, carried on a fine tall stem. After a day or two it pales almost to white, but lasts long in good condition. Fine to plant above pink English Daisies. Late flowering. Height, 30 inches. \$0.95 for 10; \$7 per 100.

**WELWYN.** A tulip to which the word exquisite is easily fitted. It is fine in form, goblet-shaped with blunt, slightly reflexing petals of softest yellow with lovely, almost imperceptible shadows. Especially lovely for cutting. Height, 27 inches. \$1.10 for 10; \$8.50 per 100.

**YELLOW GIANT.** This beautiful variety is one of the best of recent introductions; the large finely formed globular flower is carried on a long strong stem and is of a pure golden yellow. Height, 28 inches. \$1.10 for 10; \$8.50 per 100.

*"If I could put my words in song  
And tell what is there enjoyed,  
All men would to my gardens throng,  
And leave the cities void."*

—EMERSON



# Darwin Tulips

A vigorous race of self-colored flowers, distinguished by their strong and tall stems and their shapely flowers. To all intents and purposes they are "Breeder Tulips." They flower simultaneously with the Breeder, Cottage and Hybrid Tulips during the month of May, with the exception of far southern sections, where they bloom during April.

The varieties named in our list have been especially selected as being distinct, showy, and beautiful. Unsatisfactory varieties have been eliminated, so that you need have

no hesitation in choosing the colors you require, as all are good.

Awarded many Gold Medals, Cups and other Highest Honors for Superiority, including the Gold Medal offered by President Coolidge, the Gold Medal of the Garden Club of America, the Gold Cup of the Holland Bulb Exporters Association, and the Gold Medal presented by Her Majesty, Queen Wilhelmina of the Netherlands.

**AFTERGLOW (Katherine Havemeyer).** The beautiful color of this fine tulip is a striking association of rose and orange with salmon lights; it might be called a soft apricot-orange tinged with pink with a light orange edge. This superb variety will make a gorgeous effect if planted in masses with a ground cover of *Myosotis* or rising out of a mass of *Cheiranthus allionii*. Yellow Pansies also make a good ground for it. Height, 29 inches. 0.90 for 10; \$6.50 for 100.

**ANTON MAUVE.** A fine tall flower of generous cup shape. Its darkest tone is Bishop's violet, but it pales to lilac and turns to silver at the edges. Beautiful among Bleeding Hearts and such a pale yellow Iris as *Halfdan*, with a few *Inglescombe Pink* tulips or massed with *Iberis sempervirens* or *Cheiranthus allionii*. Does as well in semi shade as in full sunshine; wherever planted its fine bearing will bring character to any careful grouping. Height, 32 inches. \$1 for 10; \$7.50 per 100.

**APHRODITE.** An exquisite Darwin of clear silvery pink, deeper within. There is a lovely shade of soft buff towards the edge of the petals when the flower is opening which makes this variety

increasingly attractive. Very large flower on tall stem. Height, 32 inches. \$1.10 for 10; \$8.50 per 100.

**AVIATOR HAWKES.** One of the finest Darwin Tulips. The large, beautifully formed bloom of a bright deep rose is carried on a tall strong stem. Extremely attractive exhibition variety. Height, 32 inches. \$1.10 for 10; \$8.50 per 100.

**BLUE PERFECTION.** A very beautiful tulip of bright violet edged heliotrope with a white base. Strong and vigorous grower. Petals are pointed and slightly reflexed. Height, 30 inches. \$1.75 for 10; \$15 per 100.

**BOURGOGNE.** A deep wine-red colored flower of great beauty, dark blue center. A wonderful tulip with large graceful flower carried on a fine strong stem. Height, 30 inches. \$4.25 for 10; \$40 per 100.

**CAROLINE TESTOUT.** This very unusual and beautiful tulip was named after the well known rose of that name. The color of this tulip is even more beautiful, a soft rose with a large white base. Of perfect shape and it has exceptional lasting qualities. A tulip with a great future. \$4.25 for 10; \$40 per 100.



A view in one of the finest Long Island gardens where our Superior Quality tulips and other bulbs have been used in large numbers for more than twenty years.



**CITY OF HAARLEM.** A dependable, handsome Darwin of great substance and of a fiery cardinal-red. The deep violet base of this tulip, outlined in white, gives it a striking effect when open. It is admirably at home among all the lighter colored spring flowers, such as the hardy Alyssum Silver Queen, with gay effects in the garden or border. Height, 31 inches. \$1.05 for 10; \$8 per 100.

**CLARA BUTT.** Lovely pure pink tulip that should be in quantity in every garden; of a delightful color that will go with most anything. In some lights illusive soft salmon suffusions in this fine flower add to the interest of this beautiful blossom. Would make a striking effect massed against purple Barberry. Height, 28 inches. \$0.80 for 10; \$5.50 per 100.

**DRESDEN CHINA.** Elegantly shaped flower of true Darwin type, carried on very tall straight stem. The well chosen name is indicative of the unusual colorings represented in this fine variety. It is a very bright tulip that draws immediate attention in a collection. Indeed a unique flower, which would be extremely effective over yellow Pansies or Munstead Primroses. Height, 30 inches. \$2.85 for 10; \$26 per 100.

**DUCHESS OF HOHENBERG.** Most lovely association of grey-lilac and rosy heliotrope. A magnificent flower of perfect form, borne on a stiff stem. Makes lovely beds with white Violas. Height, 29 inches. \$1.50 for 10; \$12.50 per 100.

**ÉCLIPSE.** Dark, rich, red Darwins are not too common, but here is one of beautiful form, splendid firmness of petal and stem, which would be capital if used with La Tulipe Noire, a tulip long known to many of us as a most valuable flower for the spring enrichment of the border. A glowing, dark blood-red flower with a lustrous surface and violet, white-margined center. So substantial is its quality that it lasts well through the tulip season. Makes an indescribably gay display with white Camassias and associated with another tulip of a more brilliant hue. Height, 30 inches. \$1.85 for 10; \$16 per 100.

**FAUST.** A long, large and splendid flower of deep wine color, much lighter than the other Darwin, La Tulipe Noire, but related to that in color. This is a flower of oval form of fine spreading petal, and well held up on its tall stems; a magnificent thing for cutting or for rich effects among other tulips in the border. Height, 31 inches. \$0.95 for 10; \$7 per 100.

**FLAMINGO.** A genuine addition to the ranks of the pure pink tulips, this exquisite globular, pointed flower of serene color has received a warm welcome. It has a well defined white base with a blue halo and the petals have a silvery sheen. Enchanting amongst Camassias and silver leaved Nepeta while it is also very effective amongst Bleeding Hearts. Height, 28 inches. \$0.90 for 10; \$6.50 per 100.

**GIANT.** Immense rounded flowers of heavy texture, the color of Burgundy wine, with violet shadowings and a white base, marked with blue. Indescribably rich above a carpet of golden brown Pansies. Height, 30 inches. \$0.95 for \$10; \$7 per 100.

**GLORIA SWANSON.** An enormous flower of rosy-red, becoming a clear red upon fading with white center. Tall strong stem, flower has great lasting qualities. An excellent variety for exhibition purposes. Height, 28 inches. \$2.25 for 10; \$20 per 100.

**HELEN EAKIN.** This chaste, noble tulip is considered one of the finest of all white tulips, standing over thirty inches tall; it has a round cup which for purity of color and perfection of texture is not to be seen elsewhere. There is no colored base; the tulip is the purest white throughout except for soft violet anthers and greenish white stigma. Its gentle curves and beautiful proportion give it a look of great distinction; matchless of form, of great size, it is a symbol of heavenly purity. A suggestion for flowers of all kinds to neighbor this would be Phlox divaricata Laphami, Barr's Alpine Blue with Aubretia below; then with the dominating flower of this glorious tulip might be seen a spring picture worth having worked to create. Height, 28 inches. \$2.10 for 10; \$18.50 per 100.

**INSURPASSABLE.** Here is another Hybrid of exceptional merit. A very large lilac flower, of fine form and great substance, is held aloft on tall strong stem. Planted with Munstead Primroses, or rising out of a mass of Forget-me-nots and the double Arabis, or standing in a clump by itself, this unusual variety will attract immediate attention and will make very beautiful groupings. A clump placed at the foot of a Laburnum will be exceptionally pretty. Indeed worthy of your careful consideration for a spot in your garden where you would place some of these choice tulips. Height, 28 inches. \$3.50 for 10; \$32.50 per 100.

**JUBILEE.** Of deepest wine color and deepest violet, this tulip with its splendid carriage, good form and strong texture has a place by itself among the purple Darwins. A very fine, gracefully carried tulip whose dusky coloring used generously has the value of shadow in the borders. The Corinthian-Purple coloring is toned down at the edges of the petals to Daphne-red; the base is bright blue with greenish markings. Its telling hue is charming above Forget-me-nots, and if planted with a variety such as Duchess of Hohenberg, in drifts above these blue flowers, the effect should be wonderfully good. Height, 31 inches. \$1.10 for 10; \$8.50 per 100.

**KATHLEEN PARLOW.** An exceptionally fine new Darwin of such unusual coloring that it draws immediate attention in the border. The large, beautifully shaped flower is of a silvery rose with a white center; it is carried on a strong tall stem and has all the qualities to make it one of the most refined tulips so far introduced. Height, 30 inches. \$1.50 for 10; \$12.50 per 100.

**KING GEORGE V.** A dazzling cherry-rose tulip of great size and noble carriage; one of the finest introductions and a most telling color in the garden. The cup is graciously modeled and deep and the Jacqueminot shadows at the base of the petals lend an exquisite softness to the brilliant flower. The color holds well in sunshine. Lovely with early mauve and white Irises near Bechtel's Crab-apple. An effective setting may also be had by planting a mass of this amongst Myosotis or Cheiranthus allionii. Height, 26 inches. \$1.10 for 10; \$8.50 per 100.



**KING MAUVE.** If a soft mauve-shaded soft rose Darwin is needed for certain positions or juxtapositions, this is the tulip for that purpose. It is a long, large, full flower, whose color is both rich and agreeable. It would look its best perhaps near one of the French Hybrid Lilacs, such as Renée Jarry-Desloges. It is perfect in every way. Height, 30 inches. \$3.25 for 10; \$30 for 100.

**LA FIANCÉE.** A most beautiful and distinct pink tulip with a blue base. Plant near purple Barberry or purple Plum, with Camassias and Bleeding Hearts. This large and handsome tulip which is so splendid for mass effects, for groupings and for exhibition purposes, has been much in demand. Height, 32 inches. \$0.95 for 10; \$7 per 100.

**LA FRANCE.** Beautifully formed large bloom held erect on a tall stem. Of a delicate pink resembling the Rose of this name, with a pure white center. A very lovely novelty that has been greatly admired at the flower shows. Height, 28 inches. \$1.45 for 10; \$12 per 100.

**LA TOSCA.** The very fine, large, egg-shaped flower opens a sulphur-yellow, turning, as the flower ages, into sulphur-white. A strong growing tulip of delicate beauty, held aloft on strong stiff stem. Height, 27 inches. \$1.85 for 10; \$16 per 100.

**LA TRISTESSE.** Very late and very tall this tulip is extremely useful. The cup is large and well rounded and rather long of petal: the color is lavender, a cold tone with little pink in it, paling to silver at the edges of the petals, and with curious ruddy stains in the interior, the surface fine and satiny. Yellow Tulips are its best companions. Height, 30 inches. \$0.90 for 10; \$6.50 per 100.

**LA TULIPE NOIRE.** The darkest of the tulips. A very large, rich velvety blackish maroon flower. Height, 28 inches. \$0.95 for 10; \$7 per 100.

**LILAC WONDER.** One of the finest varieties in the entire collection. Enormous flower of a bright porcelain with a white base; a most unusual shade in tulips. Of great substance, possessing unusual keeping qualities. Height, 30 inches. \$1.05 for 10; \$8 per 100.

**MAHOGANY.** A very large flower of excellent form, beautiful deep mahogany with a much darker base. A very attractive exhibition variety. \$4.25 for 10; \$40 per 100.

**MARGAUX.** A tremendous flower of deep wine-red, broadly edged with a lighter shading of wine-red, blue base carried on a strong, stiff stem. A tulip of great size and beauty. Height, 30 inches. \$2 for 10; \$17.50 per 100.

**MAYA.** This is a very beautiful true Darwin Tulip which is in a class with such beauties as King George V. and Venus. The large well formed flower is of a fine lilac shade and stands on a long strong stem. It is a beautiful exhibition variety. Height, 29 inches. \$1.75 for 10; \$15 per 100.

**MELICETTE.** A flower of unusually beautiful form, a deep sympathetic mauve in color with a clear blue base and a fine silver sheen. A charming flower with reflexing petals. Effective with Bleeding Hearts against white Spirea, or

amongst grey-leaved plants, with a pale yellow tulip like "Madame Buysens" or "Moonlight." Height, 28 inches. \$1.10 for 10; \$8.50 per 100.

**MR. FARNCOMBE SANDERS.** A vivid rose-scarlet flower of superb form and great size. Splendid for distant effects against evergreens; one of the very best for borders. Height, 32 inches. \$0.85 for 10; \$6 per 100. -

**MRS. GRULLEMANS.** A lovely pure white Darwin-Hybrid Tulip. Large flowers of great substance with pure white center and light sulphur anthers are carried on tall stiff stems. One of the finest varieties that would look well with Forget-me-nots or with Anchusa myosotidiflora or over purple Pansies. A clump of ten of these would be a very choice bit in your border. Height, 27 inches. \$5 for 10; \$47.50 per 100.

**MRS. HAROLD IRVING PRATT.** In this superb tulip there is an amazing blend of soft rose and beige with rich Fuchsia lights and wood-brown shadows, with a slight tinting of bronzy yellow at the extreme edges of the petals. Its base is yellow with dusky anthers. It is a proudly carried flower of richly opulent curves. Of great size, rounding cup with a slight suggestion of reflexing of the outer petals. One of the most entrancing color combinations ever seen in any tulip. It is one of the most arresting tulips of recent introduction. The whole flower, whether seen from near or far, creates a sensation in the mind of the lover of tulips, and of curiosity and admiration in the mind of the casual observer. It is seen at its best against the dark surfaces of Yew or Box, and, if it must have companions, the delicate grey feathers of Artemesia and a few clumps of Violas will not detract from its beauty. An early pale lavender Iris would form a perfect companion for this tulip. The late Scilla campanulata var. Excelsior, clustering about its base might enhance the effect, or Mertensia would also be a delightful flower near this one. A pale yellow Cottage or Hybrid Tulip or a dark chestnut-colored Breeder also could properly stand near it. Height, 34 inches. \$2.10 for 10; \$18.50 per 100.

**MRS. MANDEL.** A superior tulip with very large and substantial flowers. The color is a violet-blue flushed lilac base. A strong grower. Height, 28 inches. \$1.05 for 10; \$8 per 100.

**PRIDE OF HAARLEM.** An old, but very fine tulip. Of brilliant rosy carmine with blue base. Very large flower of superb form borne on a tall strong stem. Height, 30 inches. \$0.80 for 10; \$5.50 per 100.

**PRINCESS ELIZABETH.** An extraordinarily lovely rose-pink tulip with topaz lights and hints of Fuchsia shadowings on the exterior and a clearly defined white base with a blue halo. The cup is large and rather deep, of slender yet rounded form, and opens well. Delightful with a foreground of Phlox G. F. Wilson, or planted in front of dark evergreens. Height, 28 inches. \$0.85 for 10; \$6 per 100.

**PRINCESS MARY.** Here is a long slender, egg-shaped tulip of exquisite and gentle grace, a most glorious hue, indeed one of the finest of all the Darwins. The flower is very large and well shaped, of a full warm rose-pink, deeper within





Hybrid Tulip Marjorie Bowen  
See Page 16



Breeder Tulip Mahony King  
See Page 14

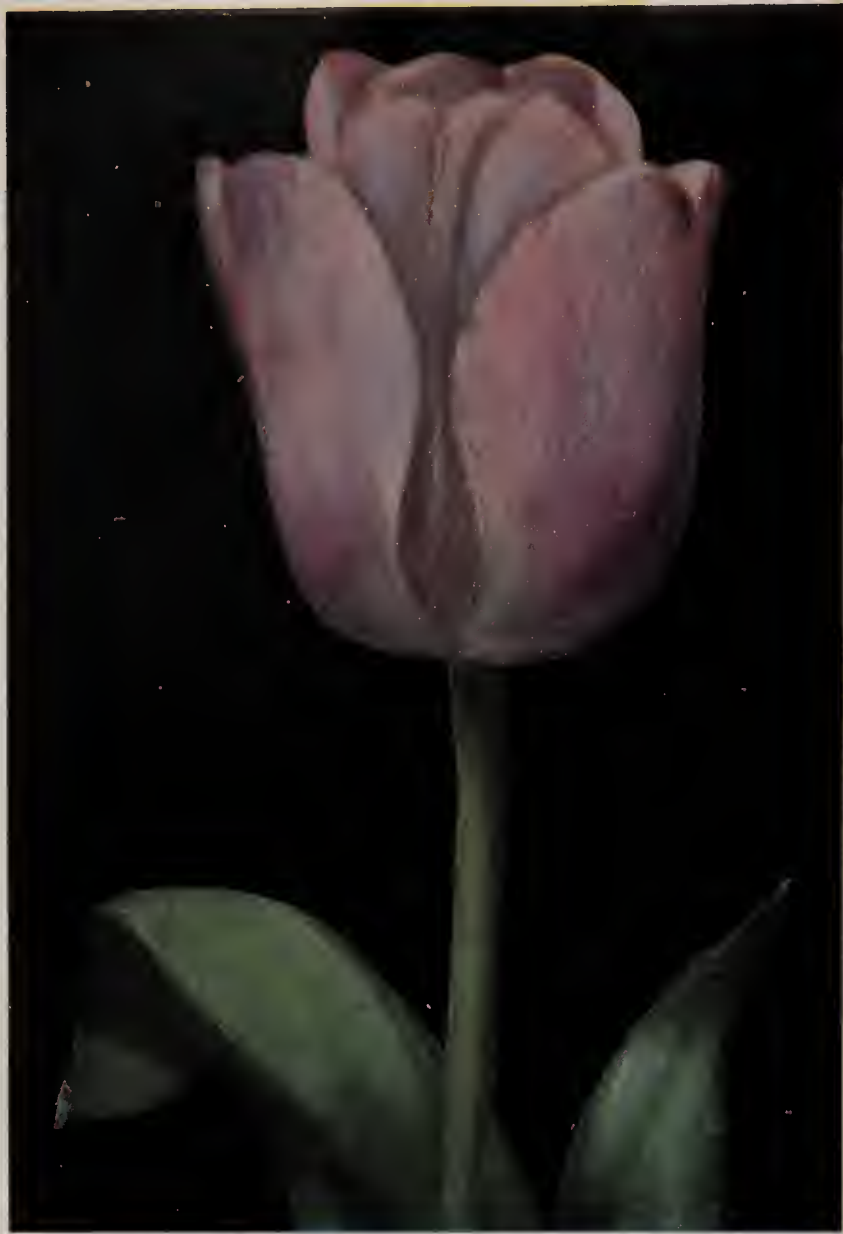


Darwin Tulip Melicette  
See Page 20



Darwin Tulip Valentin  
See Page 21





Darwin Tulip Lilac Wonder See Page 20



Darwin Tulip Turner See Page 21



Hybrid Tulip Barbara Pratt See Page 15



Hybrid Tulip Lemon Queen See Page 16



and with fawn-colored lights and a fine pale rib down each petal; a white base with purple halo. The inner tone of pink is both deep and rich. Lovely with fluffy white flowers. For this stately and tall tulip, the use of *Dicentra spectabilis* is suggested, if planted in the border. *Dicentra* might well be set in front of, as well as among such a tulip as *Princess Mary* as the latter is sure to tower above the plants of *Bleeding Heart*. If planted in partial shade the magnificent color will show to the best advantage. Height, 35 inches. I am very glad to have the opportunity to now offer this so beautiful variety at a more moderate price. \$1.90 for 10; \$16.50 per 100.

**PRINCE OF WALES.** Here is a shining cherry-red Darwin, the red of those sashes and hair ribbons which, if we were very good, we were permitted when small. The merest suspicion of blue in its hue makes it eminently suitable for use with *Myosotis*, *Mertensia*, or the spring-blooming *Phlox*, and if a brilliant and dashing effect should be wanted, it might be grown above the double white *Arabis* in long drifts or colonies or both naturally intermingled, not regularly set. A magnificent tulip of upstanding and commanding poise. The deep flower with its long pointed petals has in its gleaming cherry-red an intangible golden glow; the base is white with blue halo. Height, 28 inches. \$0.90 for 10; \$6.50 per 100.

**RONALD GUNN.** Very large handsomely formed flower of dusky plum color with a pale border and amethyst and bronze lights within and a dark base. A unique variety which comes closer to true blue than any other tulip. Would be very effective interplanted with *English Bluebells* (*Scilla campanulata*). Height, 28 inches. \$0.90 for 10; \$6.50 per 100.

**THE BISHOP.** This highly desirable tulip is often considered the best in its color; we always use it in our plantings for our exhibits. It is a tall variety with a medium sized cup of a lively tone of *Bishop's* purple with illusive fawn colored lights on the reverse of the petals and a white interior base with black anthers. Would be superb above a carpet of apricot colored *Violas*. Height, 30 inches. \$1.15 for 10; \$9 per 100.

**THE PEACH.** A most attractively colored tulip of peach color with large white center. The flower

is of very good size and is carried on a stiff stem. A very fine exhibition variety. \$4 for 10; \$37.50 per 100.

**TURNER.** Extra large flower of exceedingly rich cherry-rose color, outside purple-garnet. This is an extra fine variety that should be in every worthwhile collection. \$1 for 10; \$7.50 per 100.

**VALENTIN.** A tall nobly carried tulip, deep mauve-violet in color with light mallow-purple lights within and a bright blue base. One of the earliest Darwins to flower and lasting well. This large bold flower beautifully formed, makes a fine companion for the lemon colored tulip *Moonlight* or the deliciously colored *Madame Buysens*, with a floor of *Viola Jersey Gem*. Height, 35 inches. \$0.90 for 10; \$6.50 per 100.

**VENUS.** This whole flower has a chalice or cup of the loveliest, deepest pink. A very finely formed flower, which is held at the top of a three foot stem. Its faint flush of paler pink at the top of the inner petals adds to the charm of the flower; its general color is that of the deepest pink *June Rose*. Only the taller spring flowers should cluster about the plantings of the tulip—*Mertensia virginica* is one that could not fail to look well here, or a mass of *Scilla campanulata* var. *Excelsior*. This appealing and beautiful flower, finely modeled, is one of the most attractive of the pink tulips with its pure color as of a wild rose. I have seen it massed against the low-sweeping plumes of white *Persian Lilacs* with splendid effect. Height, 30 inches. \$0.95 for 10; \$7 per 100.

**WHITE GIANT.** This is a perfect white tulip. It has the correct Darwin form, straight, stiff and tall stem, flower petals are thick; it is without question one of the best white tulips in the collection. An outstanding exhibition variety. Height, 30 inches. \$1.50 for 10; \$12.50 per 100.

**ZULU.** Shining blackish purple flower with distinct violet edge. A graceful variety with pointed petals. Fine as a border plant. Height, 29 inches. \$0.90 for 10; \$6.50 per 100.

**ZWANENBURG.** A good white Darwin Tulip available at a reasonable price. Flower is pure white, large and of good substance. \$1.05 for 10; \$8 per 100.

---

We recommend that garden lovers always secure the heaviest "Mother Bulbs" for most successful tulip planting. Our Holland growers have frequently told us that less than five per cent of the entire Holland bulb crop consists of that extra high grade which we demand from them. Our prices in these lists are based upon delivery of such Supreme Quality only.

*For the selection and reservation in Holland of this Superior Quality, it will be of great help if you kindly send your orders very early, preferably before July fifteenth.*



# Lily—Flowering Tulips

As the result of crossing the dainty, pointed petaled *Tulipa retroflexa* with a pink Darwin, we have here a very beautiful and distinct race of tulips having graceful, slightly reflexing flowers with curved pointed petals, car-

**ALASKA.** Here is a most remarkable tulip of a clear bright yellow and most elegant in form. The tone of the yellow is very unusual, so even and so soft it is, and the form of the long slender flower is equally interesting. The flower is all of this charming yellow, there is no other color anywhere. The petals reflex slightly and the charm of the slender bloom is marked. A fine tulip to use with *Mertensias* or with *Scilla campanulata* var. *Excelsior*. \$0.95 for 10; \$7 per 100.

**CAPTAIN FRYATT.** A most attractive tulip of dark ruby-violet with a violet-blue center. Petals reflexed. The only tulip of this color. Height, 24 inches. \$2.10 for 10; \$18.50 per 100.

**ELEGANS ALBA.** A delightful creamy white tulip with narrow carmine margin that does not spread as the flower ages. A bed of this is very pretty edged with the old-fashioned green-and-white-striped *Funkias*. \$1.40 for 10; \$11.50 per 100.

**LEONORA.** A very lovely variety of bright yellow with reflexed petals. A great improvement over the well known "*Retroflexa*." Height, 26 inches. \$2.10 for 10; \$18.50 per 100.

**MARCELLINA.** A very graceful novelty. Its color is a glorious rosy-red with a pure white center. Petals reflex. The best Lily-flowering tulip in this color, an improved *Sirene*. \$1.20 for 10; \$9.50 per 100.

ried on tall, sturdy stems.

They flower with the Breeder, Cottage, Hybrid and Darwin Tulips, during the month of May except in far southern areas where they bloom during April.

**RETROFLEXA SUPERBA.** Effective on account of its severe and simple beauty. The form is particularly impressive; the corolla in its lower part fills out roundly and delicately like an urn; then is somewhat contracted upward and again curved outward at the point of the three outer and narrower sepals. The stem has that slight amount of curvation which redeems it from the appearance of formality. A fresh honey-yellow, extremely beautiful. Sweetly scented. \$1.10 for 10; \$8.50 per 100.

*"Odor is the crowning charm of flowerhood."*

**SIRENE.** The lovely Clara Butt-pink tulip, a pink *Retroflexa*. Many charming uses can be found for this enchanting flower. The form of it has always commended it to such artists as Miss Jekyll. A charming rosy pink, shaded pale yellow; and among *Mertensia* or near *Phlox divaricata*, this tulip would be a delight to the eye. \$0.90 for 10; \$6.50 per 100.

**WHITE DUCHESS.** Exceedingly beautiful Lily-flowering tulip of a pure snow-white. The flower is very large and of most artistic form; the base is absolutely pure, the anthers are creamy white giving to the entire tulip the effect of perfect purity. It is carried on a tall, straight, strong stem and will create a lovely picture if planted in clumps with a ground cover of *Myosotis* or *Anchusa myosotidiflora*. Height, 29 inches. \$2.50 for 10; \$22.50 per 100.

## Botanical Tulips and Species

The general characteristics of the various species, all of which are natives of Asia Minor and Central Asia, are bright colors and recurved petals. These tulips do not always feel happy in their new surroundings and after two, or possibly three seasons, they will disappear. With care

**BIFLORA.** Flowers are small, pure white, delicate and carried several on a stem. \$2.50 for 10; \$22.50 per 100.

**CLUSIANA.** Often called the Lady Tulip. A charming, sprightly, vivid, upstanding beauty, with grey-blue leaves and a blossom gaily striped in bright rose and white; one of the most fascinating of these species. The small, pointed flower is of artistic form, distinct and beautiful. A mass planting underneath a group of evergreens in our recent exhibition garden at the International Flower Show always creates tremendous enthusiasm and is most effective. Plant this tulip in masses or in clumps or use it as edging; you will like it anywhere. We have seen it massed on a bank with *Narcissus Poetaz Elvira* and rising out of *Forget-me-nots*, or amongst

and the provision of suitable quarters they will flower quite satisfactorily. They feel best contented in rock gardens and borders. The list we offer contains the varieties that have proven most satisfactory. WE GUARANTEE BULBS OF OUR BOTANICAL TULIPS TO FLOWER.

*Scilla campanulata* var. *Excelsior*, furnishing a delightful picture remaining a long time in bloom. Height, 12 inches. \$1.05 for 10; \$8 per 100.

**CORNUTA STENOPETALA.** Beautifully formed flower lacinated like a Parrot Tulip, but held upright on tall stiff stem. Very interesting and curious in a collection. Color combination scarlet and gold. \$2 for 10; \$17.50 per 100.

**DASYSTEMON.** Very beautiful dwarf species, specially valuable for planting in the rock garden or for drifts in front of or below evergreens; may also be attractively used for clumps here and there in the early flower border. In early April the delightful, very showy flowers appear, about six inches above the ground spreading themselves over fine foliage; its cup is like a star, yellow with white lights. Several flowers are produced on a





Hybrid Tulip Insurpassable

See Page 19



Hybrid Tulip Golden Age

See Page 16



Breeder Tulip Maréchal Victor

See Page 14



Breeder Tulip Louis XIV

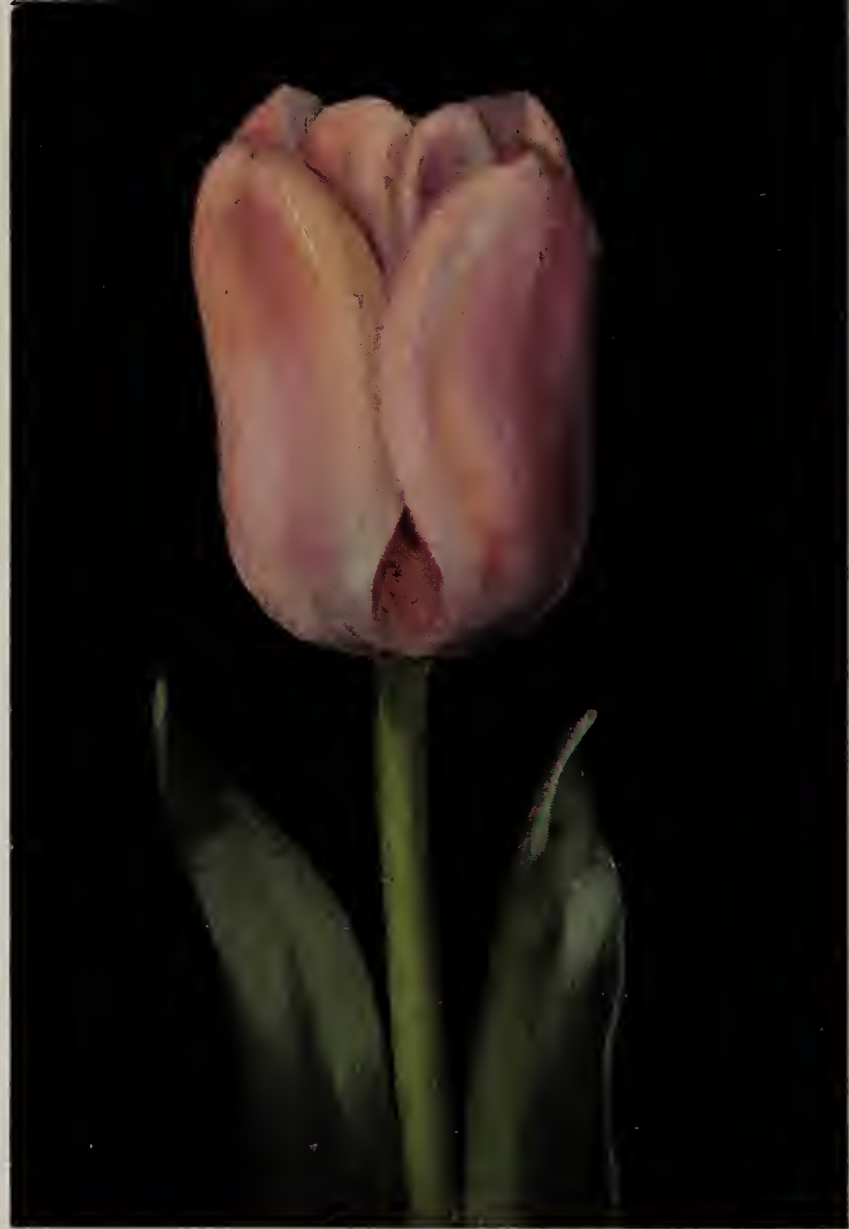
See Page 14





Breeder Tulip Rayon d'Or

See Page 14



Darwin Tulip Dresden China

See Page 19



Parrot Tulip Fantasy

See Page 23



Darwin Tulip Anton Mauve

See Page 18



stem, once the plant has become established. Extremely scarce. \$2.50 for 10; \$22.50 per 100.

**EICHLERI.** A grand tulip from Turkestan producing an immense crimson-scarlet flower with glistening black center marked with gold. Height, 11 inches. \$1.05 for 10; \$8 per 100.

**FOSTERIANA RED EMPEROR.** A glorious scarlet-red tulip of remarkable size and substance, large black center with a yellow border. Height, 18 inches. Each, \$1.75.

**GREIGII.** Brilliant orange-scarlet goblet-shaped flower, pointed, slightly reflexing petals, and broad, thick leaves flushed with purple. Flowers in late April and May and is one of the most gorgeous of tulips. Lovely with a ground-work of Chionodoxa. Hot, dry situation. While a wonderful tulip when it flowers well, the bulbs will sometimes produce no bloom. Height, 9 inches. \$4.50 for 10; \$42.50 per 100.

**KAUFMANNIANA.** One of the most beautiful of all tulips. Large, creamy flower, brilliantly marked with carmine, yellow center, it opens flat and is carried on a stem usually less than a foot in height. Blooms in April and is delightful. The bulbs should be planted at least 6 inches deep. Plant large masses of these under trees or evergreens. Splendid for naturalizing in shady places; self-sows freely. Try planting it loosely with Muscari Heavenly Blue. Height, 5 to 7 inches. \$1.75 for 10; \$15 per 100.

## Parrot Tulips

You will like to have some of these quaintly shaped flowers, particularly for house decoration or for clumps here and there in the border or where you have strong groups of evergreens. Their artistic form and coloring make them especially suitable for cutflower purposes or for long drifts

**FANTASY.** The magnificent pink Parrot Tulip. A sport of Clara Butt, with the same habits in every way as to color, height, strength of stem, and time of flowering. The flowers are of quaint and beautiful form, the petals being lacinated, having curious excrescences on the outside. It is not only the strangely-exciting form of this tulip or its main color, which is a delightful warm pink, that enthalls one; it is the inner color of it, a deep and velvety rose color which is more sumptuous than words can tell. The wonderful encrustation on back of petals is like an enameling of apple-green. And one of the virtues of this wonderful flower is its stiff straight stem. We are very glad to be in a position to offer this fine tulip at a moderate price, if purchased with other varieties. \$1.40 for 10; \$11.50 per 100.

**GADELAN.** A sensational novelty, resembling a catleya orchid in color and shape. When fully developed it often measures six to seven inches across with a blending of blues and purples, edged

**LINIFOLIA.** This is an ideal tulip for "high lights" in the rock garden. Beautiful dainty species of a fiery scarlet, flowering about seven inches above the ground in early April. Extremely attractive also for clumps amongst dark green evergreens. \$3.25 for 10; \$30 per 100.

**PERSICA.** A charming dwarf variety for narrow borders of the rock garden. Fragrant yellow flowers, bronze on the exterior, are borne in twos or threes on a slender, curving stem. Height, 3 inches. \$4.05 for 10; \$38 per 100.

**SAXATILIS.** A very attractive flower of delicate lilac with yellow base. Height 9 inches. \$8.25 for 10; \$80 per 100.

**SPRENGERI.** This is the latest of all tulips to bloom; a splendid acquisition to the rock garden and very effective planted in drifts along a background of evergreens. Beautiful and very showy. The flowers are large carried artistically on a stem eighteen inches high; fiery orange-scarlet suffused on the outside of the petals with a soft shading of buff and orange. The anthers are golden. \$4.50 for 10; \$42.50 per 100.

**VIRIDIFLORA PRAECOX.** Large, well formed, wide-open flower with pointed petals of a soft pale green edged with creamy yellow. A charming variety of extraordinary coloring. Very nice to cut with yellow or pink tulips. Very scarce. Height, 20 inches. \$3.50 for 10; \$32.50 per 100.

against a deep green background.

After careful study it is my opinion that five varieties only should be recommended this year in our book. All are very fine and will give you much satisfaction and pleasure.

white with emerald green markings. The inside of the flower is bright violet-purple with white center and contrasting black anthers. Fine sturdy stems. Height 22 inches. Each, \$2.50.

**LADY DERBY.** This delightful tulip is a sport of the Darwin Tulip Circe. The petals are Parma-violet with some pale pink and white edges, and blue-green marks. The small white center has a blue edge. Height, 28 inches. \$3 for 10; \$27.50 per 100.

**SUNSHINE.** Medium size flower of a bright golden yellow. This attractive tulip is a sport from Cottage Tulip Bouton d'Or. An exquisite novelty. Each, \$3.

**THERÈSE.** A beautiful large tulip carried on a fine stem. This attractive variety is a sport of the well known "Mr. Farncombe Sanders" which it resembles in color, being a brilliant rosy-red. Each, \$1.75.

*"The Cottage, the Darwin and the English Florist's tulip, these are the three arbitrary divisions of this Arabian Nights' treasure, which, buried once, reduplicates itself and increases year by year."*

—ROSAMOND MARRIOTT WATSON



# Rembrandt Tulips

When the coloring matter of a "self-color" has become split up into stripes and blotches, that particular flower is called "broken" or "rectified." When the Darwin Tulips "break" into these variations, they are called "Rembrandt" Tulips. They are very decorative but should be planted by themselves or in combination with the "Bizarres" and

"Bijbloemen" which are the broken forms of Breeder Tulips. All require the same cultural treatment as the other May-flowering Tulips, blooming during the month of May in our latitude, and about a month earlier in far southern sections. We offer these in finest named varieties at \$9 per 100; \$85 per 1,000.

## Bizarre and Bijbloemen Tulips

### OLD DUTCH BROKEN TULIPS

In the old days of the 17th Century when the Dutch produced new varieties by "breaking" the colors and the Tulip Mania seized Holland, these Bizarres and Bijbloemen were the kinds most sought after. They still retain popularity and the better they become known the more they are asked for.

The Bizarres may be characterized as having dark brown stripes and featherings on a yellow ground; the Bijbloemen as having a white ground with rose or mauve stripes and featherings.

They bloom at the same time as the Darwins and, while I should like to see a section of the garden or of the borders given exclusively over to mass plantings of these, they will also lend themselves because of their subtle colorings in flakes and feathers, to interesting combinations with self colored Breeder, Cottage or Darwin Tulips.

Until we know these fine Bizarre and Bijbloemen Tulips better in this country, we are losing one of the greatest and most interesting pleasures of the spring garden.

I have searched gardens and nurseries in England and Holland for the most unusual of these old time favorites and take pleasure in presenting to you a limited number of outstanding varieties. All are beautiful and may be planted together.

To assist the lover of unusual things in their selection, we have assembled here the following collections:

Collection of Bizarre Tulips in ten finest named varieties selected by us, \$10 per 100; \$95 per 1,000.

Collection of Bijbloemen Tulips in ten finest named varieties and consisting half of violet and half of rose shadings, varieties selected by us, \$15 per 100; \$145 per 1,000.

## Triumph Tulips

This new race is the result of crosses between the Early Single Tulips and the Darwins. They find a place in the garden where it is necessary to bridge the gap between the early and late tulips. All the varieties listed here are strong

and tall with flowers of great size and substance. They have been selected by us from thousands grown in Holland as of outstanding merit. We recommend them to the most discriminating gardener.

**ALBERIO.** Very large flower of deep wine red. Flowers are of fine substance and carried on strong tho' graceful stems. Outstanding in its color. \$1.30 for 10; \$10.50 per 100.

**CECILIA.** Very large flower of long oval shape. Soft yellow overlaid with deep orange, getting more intense towards the border of the petals. Variety of unique coloring and markings. Nice addition to the May-flowering tulip border. \$1.10 for 10; \$8.50 per 100.

**COLUMBIA.** A tulip of great size and substance. In color it is a bright amaranth-red. An outstanding tulip of strength and substance. \$1.30 for 10; \$10.50 per 100.

**ENSOR.** A color loved by everyone. This tulip is of fair size, very graceful, of a light orange. \$1 for 10; \$7.50 per 100.

**ESSEN.** An outstanding tulip on account of size and substance. In color it is a dull blood-red with a pure white picotee edge. \$1.75 for 10; \$15 per 100.

**JOHANNA.** Possibly the most pleasing color seen in any tulip. Flower is very refined, of good size and substance and carried on stiff tho' graceful stems. In color it is a deep salmon-pink. Very beautiful. \$1.60 for 10; \$13.50 per 100.

**LOHENGRIN.** A very pleasing tulip. The large flowers are white, suffused toward the edge of the petals with a soft rose. Very strong stems. \$1.30 for 10; \$10.50 per 100.

**PRESIDENT VON HINDENBURG.** A bold and stately tulip. Flowers are very large of deep garnet red, flushed purple with a dull yellow picotee edge. \$1.50 for 10; \$12.50 per 100.

**SAGITTARIUS.** Very beautiful tulip of purest white, flushed creamy white and changing to softest rose toward the edge of the petals. Strong and vigorous grower. \$1.10 for 10; \$8.50 per 100.

**SNOWDRIFT.** An outstanding tulip. In color it is of the purest white. Flower is very large, loosely formed and carried on strong stems. \$1 for 10; \$7.50 per 100.

**TELESCOPIUM.** An elegantly shaped tulip of large size and carried on a strong stem. The outside of the flower is of reddish violet, inside violet blue. A very pleasing tulip. \$1.10 for 10; \$8.50 per 100.

**TUCANA.** A beautiful tulip very difficult to describe. The nearest we can give the color is an orange overlaid carmine changing to orange-yellow with age. Flowers are pointed and carried on graceful stems. \$0.90 for 10; \$6.50 per 100.





Darwin Tulip Eclipse

See Page 19



Cottage Tulip Carrara

See Page 15



Hybrid Tulip Mrs. F. E. Dixon

See Page 17



Darwin Tulip Faust

See Page 19





May-Flowering Tulip Rosabella  
See Page 17



Darwin Tulip Princess Mary in Foreground  
See Page 20



Breeder Tulip Garibaldi  
See Page 13



Hybrid Tulip Mrs. John T. Scheepers  
See Page 17



# Double May-Flowering Tulips

These flower approximately at the time of the great Darwin Tulips. They are thankful for a little shading against the hot midday sun which will enable them to carry their heavy blossoms erect.

**BLEU CÉLESTE.** Large, violet-purple tulip flowering later than other double sorts. It is very fine for indoor decoration and for the garden. Height, 16 inches. \$1.10 for 10; \$8.50 per 100.

**EPICURE.** Orange-brown shaded old-gold. Very large flower. Height, 18 inches. \$1.30 for 10; \$10.50 per 100.

**MOUNT TACOMA.** A very fine immense double tulip, almost like a full blown Pæony; the petals are of the purest white with yellow suffusion at the base. Height, 24 inches. \$2.50 for 10; \$22.50 per 100.

**PENSÉE ROSE.** Enormous rose lilac flower. Height, 15 inches. \$2.10 for 10; \$18.50 per 100.

## Single Early Tulips

In the following lists we offer only varieties of proven merit for American gardens. Prices quoted are for the Very Highest Quality.

**COULEUR CARDINAL.** A warm red tulip with a plum-colored bloom on the outer petals. Handsome, globular form and a strong stem that makes it particularly fine for bedding. Creates a fine effect planted among purple Pansies. Its place is essentially in the open where it produces an effect both rich and satisfying. Height, 13 inches. \$0.85 for 10; \$6 per 100.

**CULLINAN.** Pale lemon, edged pale rose. Very fine for planting outdoors. Height, 13 inches. \$0.85 for 10; \$6 per 100.

**DE WET.** Of a glorious orange color, with unusual golden salmon effect produced by scarlet veining on a deep orange ground. One of the most beautiful of Early Tulips. Makes gorgeous beds interplanted with Forget-me-nots. Has a fine fragrance, and is splendid under artificial light. Height, 17 inches. \$1 for 10; \$7.50 per 100.

**FORTUNA.** Large oval-shaped flower on tall stem. Silvery satin-rose, shaded fawn. With age the flower changes to soft rose. A very beautiful tulip for which we were awarded a Certificate of Merit at the International Flower Show in New York. Height, 16 inches. \$1.05 for 10; \$8 per 100.

**KEIZERSKROON.** Large scarlet flower, edged with bright yellow. Splendid for distant beds. Height, 16 inches. \$0.95 for 10; \$7 per 100.

**LADY BOREEL.** The finest early pure white tulip for beds. Flower of fine form, long and slender. Height, 16 inches. \$1 for 10; \$7.50 per 100.

**LE RÊVE (Hobbema).** An alluring composite of soft rose and buff; handsomely rounded flower with a strong stem. A beautiful variety for outdoor planting. Flowers somewhat later than the other Early Tulips. The lovely buff-pink coloring is very attractive. Its perfect companion is *Mertensia virginica*. Height, 13 inches. \$0.90 for 10; \$6.50 per 100.

**MAX HAVELAAR.** A remarkably rich-toned tulip which is especially beautiful under artificial light. Long flower of warm salmon-orange. Lovely massed among brown and orange Wall-flowers. Indeed a splendid and fine bedding tulip. Height, 12 inches. \$0.90 for 10; \$6.50 per 100.

**MON TRÉSOR.** One of the best yellow bedding tulips; color deep and clear; very handsome form. Height, 13 inches. \$1.10 for 10; \$8.50 per 100.

**PINK BEAUTY.** Large and artistically formed, vivid pink flower, carried on a strong, erect stem. Makes beds of remarkable brilliance and beauty when interplanted with Forget-me-nots. Lasts a long time in bloom. Height, 12 inches. \$1 for 10; \$7.50 per 100.

**RISING SUN.** A very large golden yellow tulip of fine form and sturdy habit, splendid for the border. Height, 16 inches. \$0.95 for 10; \$7 per 100.

**ROSE LUISANTE.** Fine, large rose-pink of great substance. Lovely for edging borders of evergreens. Height, 12 inches. \$0.95 for 10; \$7 per 100.

**VAN DER NEER.** Large, brilliant, violet-purple flower of fine form; splendid for outdoors interplanted with Forget-me-nots. Height, 12 inches. \$0.90 for 10; \$6.50 per 100.

**VERMILION BRILLIANT.** Large, dazzling, vermilion-scarlet flower of fine form; extra good for early blooming. \$0.90 for 10; \$6.50 per 100.

**WHITE BEAUTY.** One of the best white bedding tulips and delightful for window-boxes and garden interplanted with yellow Pansies. Height, 12 inches. \$1.20 for 10; \$9.50 per 100.

**YELLOW QUEEN (Moonbeam).** Very large, graceful and beautiful flower of a deep primrose-yellow, shading to a deeper color at the edges. An excellent variety for the garden. Height, 14 inches. \$1.30 for 10; \$10.50 per 100.



# Double Early Tulips

For effective planting in beds or borders, located in exposed situations where the taller-growing kinds are unsuitable, for substance and lasting qualities, these tulips are invaluable. We offer below the most recommendable sorts only.

**BOULE DE NEIGE.** Large, pure white flower, resembling a white Pæony. Valuable for bedding. Height, 10 inches. \$1.05 for 10; \$8 per 100.

**COURONNE D'OR.** Full, deep yellow, flushed orange. A good bedding variety and splendid for cutting. Height, 11 inches. \$0.95 for 10; \$7 per 100.

**ELECTRA.** Magnificent, enormous flower; beautiful rose, feathered violet; a handsome variety of unique color. Height, 12 inches. \$0.90 for 10; \$6.50 per 100.

**GOLDEN KING.** A very beautiful variety in two tones of yellow. Lovely for cutting and for massing in the borders against early white-flowering shrubs. Height, 13 inches. \$1.10 for 10; \$8.50 per 100.

**MARÉCHAL NIEL.** Very beautiful variety of the Murillo habit; the color is distinct; soft canary-yellow flushed with soft orange. Splendid for "high lights" in the garden. A planting of this magnificent tulip with a ground cover of Forget-me-nots (use Sutton's dark blue strain of *Myosotis*) makes an unforgettable picture. Height, 11 inches. \$1.20 for 10; \$9.50 per 100.

**MR. VAN DER HOEF.** This is, without doubt, one of the finest golden yellow double tulips; it is an exquisite flower, very full and large and

excellent for outdoor planting. Height, 11 inches. \$0.95 for 10; \$7 per 100.

**MURILLO.** Exquisite soft pink, with white markings. Makes beautiful beds and is the most easily grown. Height, 11 inches. \$0.90 for 10; \$6.50 per 100.

**MYSTERY OF INDIA.** An unusual shade among the early tulips, apricot and bronze, tinged orange-pink, a most interesting and lovely variety. Height, 11 inches. \$1 for 10; \$7.50 per 100.

**ORANJE NASSAU.** This is a sport from the Murillo variety, being of an orange-red which is very effective for planting in beds or setting in groups in the border. Height, 11 inches. \$1.10 for 10; \$8.50 per 100.

**PEACH BLOSSOM.** Large, very double, bright pink flowers, flushed white. It is most effective for indoor decoration and lasts a long time cut. Height, 11 inches. \$1 for 10; \$7.50 per 100.

**TEA ROSE.** The same lovely blending of pale yellow and soft rose as seen in many Tea Roses. Splendid for planting out. Height, 11 inches. \$0.90 for 10; \$6.50 per 100.

**VUURBAAK.** Fine scarlet tulip, opening to brilliant orange-scarlet. Handsome for beds. Height, 11 inches. \$0.90 for 10; \$6.50 per 100.

---

For the selection and reservation in Holland of our Superior Quality it will be of great help if you will please send your orders very early, preferable before July fifteenth.

At "Paradou," located at Brookville, Long Island, we have planted a really fine collection of tulips. In order to study and enjoy them we cordially invite you to visit our Display Gardens at frequent intervals during the season. Browse through the grounds in solitude making your own notes and enjoying a combination of wild garden, naturalized

plantings, woodland and beautifully landscaped paths of rare Azaleas, choice French Lilacs and other spring flowering shrubs.

During no time in the growing season will there be a negative period but Tulip Time, like Abou Ben Adhem "leads all the rest." Choose your varieties from "living models" carefully labeled, and suffer no disappointments later,—but whether eager for new material or not, visit us and satisfy the craving for beauty that is in the heart of every gardener.



# Prizewinning Tulip Border

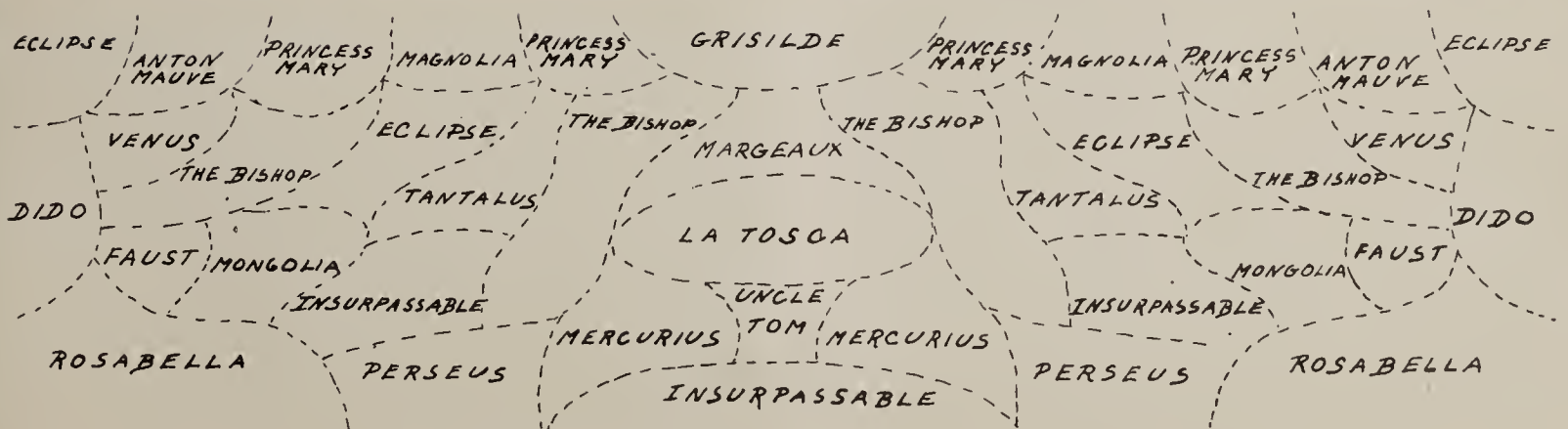
of

MR. SAMUEL A. SALVAGE, *Esquire*

MR. THOS. CHADBURN, *Supt.*  
*Glen Head, Long Island, N. Y.*

Winner of First Prize in both the great 1934 and 1935 International Spring Flowershows, Grand Central Palace, New York City, in exceptionally strong competition. Also winner of the Grand Sweepstakes Award, the \$5,000 Gold Shield offered by the Holland Bulb Exporters Association of Haarlem, Holland.

SCHEEPERS' TULIPS WERE USED EXCLUSIVELY IN THIS PLANTING.





# Crocuses

## Spring-Flowering Varieties; Plant in Fall

- AMETHYST.** Bright pale lavender, very early. Medium sized flower. \$0.65 for 10; \$4 per 100; \$37.50 per 1000.
- BIFLORUS (Scotch Crocus).** Outer segments feathered lilac; inner segments snowy white. Slightly scented. \$1.20 for 10; \$9.50 per 100; \$92.50 per 1000.
- CHRYSANTHUS Canary Bird.** Clear orange-yellow. A fine variety. \$3.75 for 10; \$35 per 100.
- CHRYSANTHUS E. A. BOWLES.** Clear yellow, large flowers. \$2.75 for 10; \$25 per 100.
- CHRYSANTHUS LARGE WARLEY.** Pure white, large flowers. \$2.75 for 10; \$25 per 100.
- DREAM.** Deep violet-blue, large flowers, very free-flowering. \$0.65 for 10; \$4 per 100; \$37.50 per 1000.
- ENCHANTRESS.** Bright porcelain-blue, very pleasing color, large-flowering. Very early. \$0.65 for 10; \$4 per 100; \$37.50 per 1000.
- EXCELSIOR.** The largest lilac crocus in existence. Very scarce. \$1.20 for 10; \$9.50 per 100.
- GRAND LILAC.** True lilac in color, large blooms of great lasting quality, far superior to any other variety in this color class. \$0.60 for 10; \$3.50 per 100; \$32.50 per 1000.
- GRAND YELLOW.** Golden yellow. Very floriferous. \$0.65 for 10; \$4 per 100; \$37.50 per 1000.
- IMPERATI.** Fine shade of mauve, exterior of the three outside segments a rich fawn. \$1.15 for 10; \$9 per 100.
- KATHLEEN PARLOW.** Pure white, large flower, fine substance. \$0.65 for 10; \$4 per 100; \$37.50 per 1000.
- KING OF THE WHITES.** Pure white. \$0.65 for 10; \$4 per 100; \$37.50 per 1000.
- KOROLKOWI.** This unusually fine species comes from the Caucasian Mountains in Russia and is invaluable for the rock garden, for clumps in the border or for grouping near the terrace or house and under trees. The color is golden yellow shading to orange while exterior of the petals is shaded bronze; indeed a very fine introduction. \$0.80 for 10; \$5.50 per 100; \$52.50 per 1000.
- MASTERPIECE.** The best deep purple crocus, very large flowers. \$0.60 for 10; \$3.50 per 100; \$32.50 per 1000.
- MAXIMILIAN.** Very large, pure porcelain-blue \$0.60 for 10; \$3.50 per 100; \$32.50 per 1000.
- PURPUREA GRANDIFLORA.** Very large, purple-blue. \$0.80 for 10; \$5.50 per 100; \$52.50 per 1000.
- REMEMBRANCE.** The best lavender crocus, very large flowers. \$0.70 for 10; \$4.25 per 100; \$40 per 1000.
- SIEBERI.** A gem; lavender flowers with bright orange stigmata. \$0.80 for 10; \$5.50 per 100; \$52.50 per 1000.
- SNOWSTORM.** The best white crocus in existence, very large flowers. \$0.70 for 10; \$4.25 per 100; \$40 per 1000.
- STRIPED BEAUTY.** Narrow lavender stripes on white ground. \$0.65 for 10; \$4 per 100; \$37.50 per 1000.
- SUSIANUS.** Most attractive, deep, rich yellow with dark rich brown flames on exterior segments. \$0.60 for 10; \$3.50 per 100; \$32.50 per 1000.
- TOMASINIANUS.** The flowers vary from pale mauve to rich purple. \$0.55 for 10; \$3 per 100; \$27.50 per 1000.
- VERSICOLOR.** Best form of "Cloth of Silver" crocus. White, feathered ruby-purple; very pretty and effective. \$0.75 for 10; \$5 per 100; \$47.50 per 1000.

## Superior Mixture of Spring-Flowering Crocuses

The result of planting in mass effects in large quantities of this Superior Mixture of the finest varieties of Spring Flowering Crocuses is lovely always. In drifts up against the house or at the sides of the driveway, under the trees, in the orchard or anywhere in the garden to bring some color in

earliest spring. Purple, amethyst, mauve, lavender, yellow, white, striped—all these colors mixed indeed produce a ravishing effect.

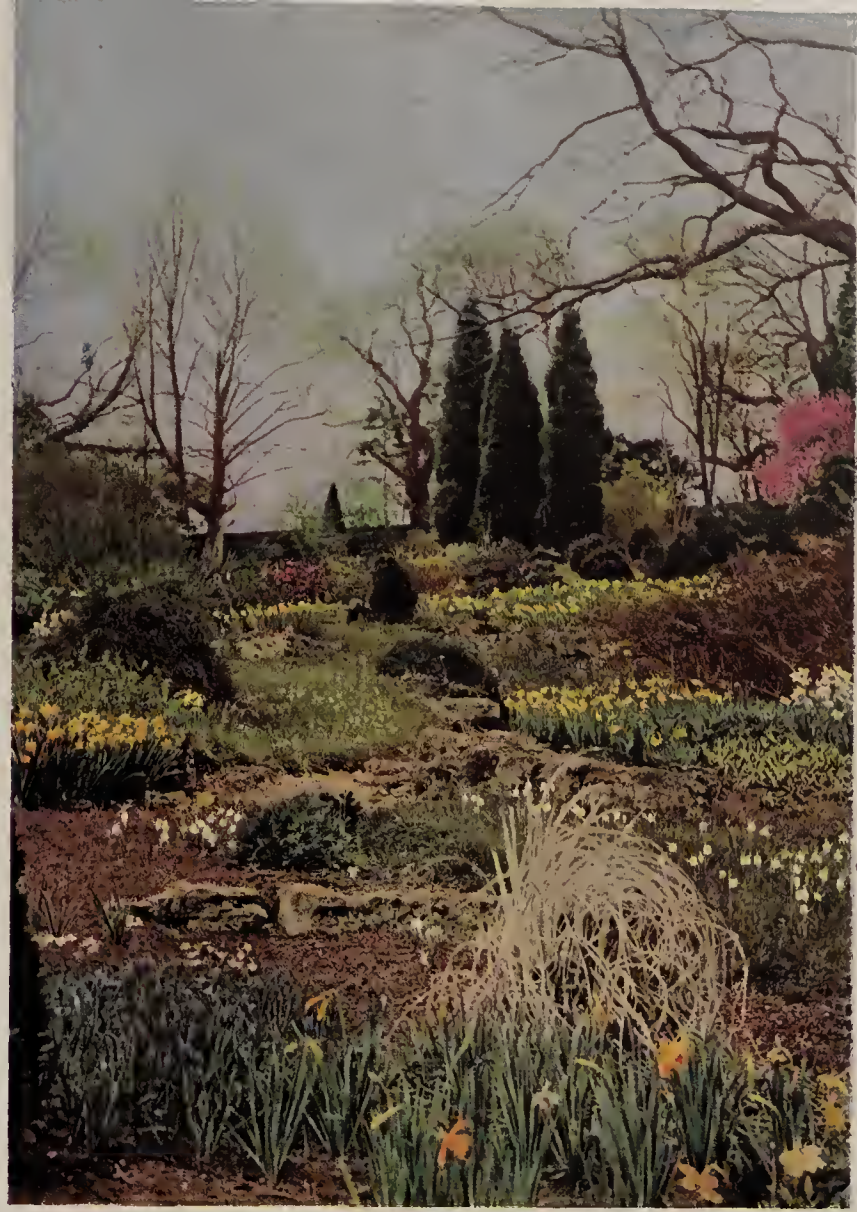
Highest quality bulbs, \$3 for 100; \$27.50 per 1000; \$250 for 10,000.

*"Here on the grassy banks, in gala dress,  
In tinted robes of fragrant breathing spring,  
In yellow, gold and purple blossoming,  
They woo the nipping air in loveliness."*





Crocuses Reflected in a Quiet Pool



The Darlings of Spring



Masses of Crocuses, Blue with Leadii Daffodils



The Lovely Chionodoxa





Mixed Daffodils (Narcissi) Naturalized



A Bank of Snowdrops



In foreground *Mertensia virginica*

In background Daffodils (Narcissi)



Snowdrops and Crocuses Naturalized on the Slope



## Autumn-Flowering Crocuses; Plant in August

One of the most entrancing and inspiring sights that one can see when traveling through the Engadine and the Bernese Alps in Switzerland in late August and September, is the landscape on the mountain sides, dotted with picturesque farmhouses, covered in many places with thousands upon thousands of the autumn-flowering Crocuses bravely unfolding their softly colored petals, showing their lovely, often gaily colored hearts, fearless of the oncoming winter.

The great pleasure of having quantities of these lovely flowers in our gardens, in the lawn, along the bank or driveway or in forgotten corners in great variety, flowering there through September into October, and some varieties

**ASTURICUS.** A very showy species from the Asturia Mountains; pale mauve to purple-lilac with darker stripes at base. \$2.25 for 10; \$20 per 100.

**IRIDIFLORUS (Byzantinus).** A native of Hungary, Western Transylvania, and the Banat; large purple outer segments, inner segments pale lilac, much branched; lilac anthers, very distinct and handsome. \$2.25 for 10; \$20 per 100.

**LONGIFLORUS MELITENSIS.** Soft lilac, feathered deep yellow at base, anthers yellow; stigmata orange-red. Violet scented. \$3.50 for 10; \$32.50 per 100.

**MEDIUS.** A fine species from the neighborhood of Mentone and Spezzia; flowers lovely rich violet, with handsome purple veining at base; stigmata rich glowing orange-red; one of the handsomest of the autumn-flowering species. \$2.25 for 10; \$20 per 100.

**NUDIFLORUS.** Flowers rich clear purple; a native of the Asturia Mountains, the Pyrénées, Landes and Cervenues, etc., and at one time naturalized in the Midland Counties of England. \$1.05 for 10; \$8 per 100.

**PULCHELLUS.** Lavender-blue with white anthers and orange spotted throat; a lovely species found growing in the heathy thickets bordering the Bosphorus. \$1.75 for 10; \$15 per 100.

**SALZMANNII.** A native of Tangier; lilac, dark feathered, delighting in a damp soil. \$1.05 for 10; \$8 per 100.

**SATIVUS (Saffron Crocus).** Habitat Italy to Kurdistan; large flowers, purplish lilac, feathered

even flowering until severe frost puts an end to all this gayety, is easily within our grasp.

They are also very attractive grown in pots indoors.

These crocuses grow very successfully in ordinary soils, but for the rare species we recommend adding a small quantity of well decayed leaf mold to the soil and surrounding the bulbs with a little sharp sand. They are thankful for a little mulching.

We need only to reserve some of these NOW for planting during late August or early September; these gems will flower within two or three weeks after planting, blossoming luxuriantly from year to year.

violet, with showy orange stigmata, slightly scented. Flowering freely when established. \$0.70 for 10; \$4.50 per 100.

**SPECIOSUS.** Bright violet-blue, prettily veined, having orange-red anthers and light yellow throat; large, handsome and showy, one of the best for naturalizing in grass and massing in borders or in rockwork. \$0.55 for 10; \$3 per 100.

**SPECIOSUS AITCHISONII.** Long handsome flowers, with sharp tapering petals, lavender, prettily feathered a darker shade and with silvery flush on outer petals. Very late. \$0.75 for 10; \$5 per 100.

**SPECIOSUS ALBUS.** A very fine white-flowered variety. \$1.45 for 10; \$12 per 100.

**SPECIOSUS ARTABIR.** A beautiful variety with large pale blue flowers and dark veinings. \$0.60 for 10; \$3.50 per 100.

**SPECIOSUS GLOBOSUS.** Very late dark blue. \$0.65 for 10; \$4 per 100.

**SPECIOSUS POLLUX.** Pale violet-blue exterior shaded silvery white. Very large flowers. A beautiful introduction. \$0.70 for 10; \$4.50 per 100.

**ZONATUS.** Rose-lilac, yellow center and orange zone; ethereal in its lovely coloring. \$0.55 for 10; \$3 per 100.

We recommend that you always plant the largest bulbs for finest effects.

For extensive naturalistic plantings which require many thousands of bulbs, we can offer a smaller size, good flowering bulb in fine varieties at \$25 per 1000.

*"Like Lilac flame its color glows,  
Tender and yet so clearly bright,  
That all for miles and miles about  
The splendid meadow shineth out,  
And far off village children shout  
To see the welcome sight."*



# Miscellaneous Bulbs and Roots for Fall Planting and Early Spring Flowering for Permanent Effects

For planting in accord with the natural surroundings of your gardens, expressive of perfect harmony and good taste; along the woodland path, in wild flower sanctuaries, along rivulets, brooks or wherever naturalistic planting is wanted. For planting of banks or ground-cover amongst Daffodils, Hyacinths or Tulips; in the border in drifts or as edging for flowerbeds.

**CAMASSIA ESCULENTA.** Very showy in mass plantings. Forms flower spikes up to 2 feet high, bearing a cluster of star-shaped flowers of a very fine rich purple. Plant 4 inches deep. Extra heavy bulbs. \$10 per 100, \$97.50 per 1000.

**CAMASSIA LEICHTLINII.** Same as above but stronger grower; flowers are larger and come in hues of a deep blue and creamy white. Extra heavy bulbs, \$20 per 100, \$197.50 per 1000.

**CHIONODOXA LUCILLIAE (Glory of the Snow.)**  
An extensive planting forms one of the most sumptuous displays of floral beauty; a mass of blue and white, intense and brilliant. They bloom at the time of the Crocuses, producing dwarf flower spikes, bearing from eight to ten little blossoms of a sky-blue with a pure white heart, creating a lovely effect. They should be planted in fall three inches deep, about eighteen bulbs to a square foot in a sunny location or in half shade and in places where they can remain undisturbed for a number of years. The flowers will cross with one another and will seed themselves forming natural colonies. \$3.50 per 100, \$32.50 per 1000.

**CHIONODOXA LUCILLIÆ ALBA.** A white form of the above, very effective when interspersed with the blue. \$1.65 for 10; \$14 per 100.

**CHIONODOXA LUCILLIÆ ROSEA.** A soft, pink form of the above. Very fine for rockeries. \$1.65 for 10; \$14 per 100.

**CHIONODOXA SARDENSIS.** This is the earlier of the two varieties to come into bloom, and the first real blue flower of another year. This is a rich blue self color. The remarks made for the variety *Lucilliae* apply to *Sardensis*. \$4 per 100, \$37.50 per 1000.

**CYPRIPEDIUM ACAULE. (The Pink Lady's Slipper or Moccasin Flower.)** For shady or damp situations and for planting in the dell amongst the ferns, or in woodlands. Grows about one foot high producing a large, showy, rose-purple flower. Plant three inches deep about eight inches apart. Mulch with pine or hemlock needles the first season or two. \$5 for 10; \$47.50 per 100.

**CYPRIPEDIUM PUBESCENS (Parviflorum).** This is the large yellow Lady's Slipper or Moccasin Flower. Showy and fragrant blooms produced at the top of a leafy stem. A colony of these flowers is exceedingly attractive. It grows about one foot high. Plant in a rich shady spot where leaf mold has been added. \$5 for 10; \$47.50 per 100.

**DODECATHEON MÆDIA (Shooting Star).** Very pretty perennial, bearing rose-colored, often white flowers in May and June; sometimes called "American Cyclamen." Thrives in rich, moist woods as well as in the open border. Extra strong roots, \$3 for 10; \$27.50 per 100.

**ERANTHIS HYEMALIS (Winter Aconite).** These produced, at about the same time that the Crocuses are in bloom, little yellow flowers like Buttercups about three inches above the ground, with settings of fine green, frilled-like collars which never seem to mind the worst of weather conditions. They will thrive under trees where few other plants can hold their own. They seed themselves freely and colonies from self-sown seed are soon formed. Plant firmly two inches deep, in shade or half shade about eighteen bulbs to a square foot. Mulch in autumn with leaf soil. \$3.50 per 100, \$32.50 per 1000.

**ERANTHIS CILICICA.** Flower is larger than above and of deeper yellow. Very attractive. \$3.75 per 100; \$35 per 1000.

**ERYTHRONIUM AMERICANUM (Dog's Tooth Violet).** These are charming woodland plants, producing in early April small, Lily-like flowers whose colors run in delicate tints of white, pink, cream, bright yellow and rose. They thrive in shaded corners or crevices of rockwork. Their beauty is enhanced by their richly mottled leaves. They like a light, rather damp, but well drained soil. Plant the corms about 5 inches deep. \$1 for 10, \$7.50 per 100.

**ERYTHRONIUM CALIFORNICUM.** Creamy white, often 4 to 5 flowers to a stem. Leaves are richly mottled. \$1 for 10, \$7.50 per 100.

**ERYTHRONIUM CALIFORNICUM (var. White Beauty).** An exquisite, almost pure white form of the type; richly banded maroon at the base. \$1.50 for 10, \$12.50 per 100.

**ERYTHRONIUM CITRINUM.** Slightly stronger grower than the variety *Californicum*. Creamy white on outside with citron center. \$1.50 for 10, \$12.50 per 100.

**ERYTHRONIUM GIGANTEUM (Watsonii).** White, beautifully spotted brown. \$1.75 for 10, \$15.00 per 100.

**ERYTHRONIUM GRANDIFLORUM ROBUSTUM.** These flowers are of the brightest Buttercup-yellow. \$1.25 for 10, \$10.00 per 100.

**ERYTHRONIUM HENDERSONII.** Similar to *Californicum*, but the flowers are of a light purple with the centers a deep maroon. \$1 for 10, \$7.50 per 100.



**ERYTHRONIUM JOHNSONII.** Perhaps the most lovely of all Erythrונים; of an exquisite rose-pink. \$2 for 10; \$17.50 per 100.

**ERYTHRONIUM PRÆCOX.** An early blooming, unusually fine variety. Leaves are mottled brown; flowers are large of a very fine rich cream color, banded maroon. One of the finest of the Erythronium family. \$2 for 10; \$17.50 per 100.

**ERYTHRONIUM REVOLUTUM.** Large flowers which upon opening are white, tinted lilac and which may become purplish as they age. Very robust. \$2 for 10; \$17.50 per 100.

**ERYTHRONIUM REVOLUTUM (Var. Pink Beauty).** These are of a soft pink with occasional flowers coming up white. \$2 for 10; \$17.50 per 100.

**FRITTILLARIA IMPERIALIS (Crown Imperial), MAXIMA RED.** A very charming Lily-like flower. These old fashioned flowers are splendid for border planting or for forcing under glass. \$4.75 for 10.

**FRITTILLARIA IMPERIALIS (Crown Imperial), MAXIMA YELLOW.** The golden yellow form of the above. Very scarce. \$12.50 for 10.

**FRITILLARIA IMPERIALIS (Orange Brilliant).** The orange form of the above. Very scarce. \$4.75 for 10.

**FRITILLARIA MELEAGRIS (Guinea Hen Flower or Checkered Lily).** These produce in early April dwarf, pendent bell-shaped flowers in various shades of color, curiously checkered, striped and splashed. They are very effective in colonies, requiring a somewhat dry situation. Invaluable for mass planting in the meadows and for naturalizing. \$4 per 100.

**FRITILLARIA MELEAGRIS ALBA.** This is the pure white form of this interesting type. Plant four inches deep. \$4 per 100.

**FRITILLARIA MELEAGRIS (Aphrodite).** The improved white form of the above. \$1.75 for 10; \$15 per 100.

**FRITILLARIA MELEAGRIS (Artemis).** Very attractive. An improved "Meleagris," grey in color. \$1.75 for 10; \$15 per 100.

**FRITILLARIA MELEAGRIS (Orion).** Very unusual. Also an improved "Meleagris," purple in color. \$1.15 for 10; \$9 per 100.

**GALANTHUS (Snowdrops).** These are particularly effective under hedges, under Cedar trees and in thin woodland along the walk or in the rock garden. They are the first to open in spring and are very lovely. They dislike being moved and should be left alone to naturalize themselves. Plant two inches deep; mulch in winter with leaf soil, leaves or well decayed manure. The single-flowering snowdrops, if they are left alone, soon take to producing double flowers. The differences and shadings in the varieties of snowdrops are so comparatively small that it does not seem worth while to offer them in variety. \$5 per 100; \$47.50 per 1000.

**LEUCOJUM VERNUM (Spring Snowflake).** This is one of the earliest and most attractive spring

flowers. Growing from 6 to 8 inches high they bear dainty nodding flowers which are white, tipped with green. They should be planted in early fall in a good, light, well drained soil in which they may be buried 2 inches deep, in masses or bold clumps, to be effective 4 inches apart, and then be left alone to bloom year after year. \$10 per 100.

**LEUCOJUM AESTIVUM.** The summer-flowering Snowflake. Three or more bells like giant Snowdrops appear on stem. Very scarce. \$20 per 100.

**LEUCOJUM AESTIVUM GRAVETYE.** A fine variety of the above with five bells borne on a smaller stem. Very scarce. \$40 per 100.

**MERTENSIA VIRGINICA (Blue Bells).** This is indispensable in the garden for color effect; a lovely soft pink and porcelain-blue combination. The plant grows from one to two feet high bearing a panicle of flowers about one inch long in short pendent clusters. It is splendid for the open border or for naturalizing along the woodland path, in the dell, along the brook or pond; it flowers from the time the Daffodils are in bloom, continuing while the May-flowering Tulips are at their best. We urge all garden lovers to use this delightful plant in quantity as it is permanent and so helpful to create beautiful pictures. Extra heavy clumps that will flower abundantly next spring if planted early this fall, \$1.75 for 10; \$15 per 100.

**MUSCARI ARMENIACUM.** Of clearest blue. The best type of the blue Muscari. \$4 per 100; \$37.50 per 1000.

**MUSCARI AZUREUS.** Sky blue; most attractive companion for the other varieties; flowers very early. \$4 per 100; \$37.50 per 1000.

**MUSCARI BOTRYOIDES ALBUS.** The white form which is very pretty planted with the blue variety of this type. \$4 per 100; \$37.50 per 1000.

**MUSCARI HEAVENLY BLUE.** While there are several kinds of Muscari, we consider this variety the best for mass planting. The flowers open just about the time that the Chionodoxas and Crocuses are going off. They do very well in the wild garden and also in the grass if it is not too rank. Nice under trees and along the borders where they may be left undisturbed. They will seed themselves and make pretty effects when established. \$3.50 per 100; \$32.50 per 1000.

**ORNITHOGALUM UMBELLATUM (Star of Bethlehem).** The hardy type; flowers are white with black eye, carried in umbels of three or more flowers. Very fine for naturalizing in woodland. \$5 per 100; \$47.50 per 1000.

**POLYGONATUM COMMUTATUM (The Great Solomon's Seal).** Indispensable for planting in wild flower sanctuaries or along woodland paths. Extra strong roots. \$2.25 for 10; \$20 per 100.

**SCILLAS (Wood Hyacinths).** These flourish in sun as well as in shade under trees. Not particular about the soil in which they grow; ideal for the wild garden but not to be despised in the border, especially if left alone for two or three years without being disturbed in any way; splen-



did in the rock garden. Produce drooping bell-like flowers. The following varieties are the best:

**SCILLA CAMPANULATA MAXIMA ALBA.** The pure white form. \$4 per 100; \$37.50 per 1000.

**SCILLA CAMPANULATA BLUE.** Porcelain-blue, candelabra-shaped bells, blooming with the May-flowering Tulips. Plant four inches deep. \$4 per 100; \$37.50 per 1000.

**SCILLA CAMPANULATA "EXCELSIOR."** The finest variety for grouping, for planting in front of May flowering Tulips, for permanent edging or for naturalizing in the woodland and among shrubbery. Tall flower spikes carry many fine large bells of a lovely deep blue; a most desirable variety. \$5 per 100; \$47.50 per 1000.

**SCILLA CAMPANULATA ROSEA.** This is a soft lilac-rose form of this type. \$5 per 100; \$47.50 per 1000.

**SCILLA ITALICA.** A very pretty blue variety, which flowers very early. \$15 per 100.

**SCILLA NUTANS (The True English Blue Bell).** Shepherd's crook-shaped flowers; showy and vigorous; very effective planted with the May-flowering Tulips. Plant four inches deep in shady or sunny situations. Mulch in autumn with leaf soil, leaves or thoroughly decomposed manure. The collected wild bulbs of this variety having proved prone to disease, we offer only the Superior Stock grown in Holland. \$4 per 100; \$37.50 per 1000.

**SCILLA NUTANS ROSEA.** A soft rose form of this type. \$5 per 100; \$47.50 per 1000.

**SCILLA SIBIRICA BLUE (The Siberian Squill).** This is the earliest to bloom connecting the flowering of the Crocuses with that of the Narcissi. They are fine for naturalizing under trees or in open woodland, producing drooping, bell-like flowers on stems three to four inches in height. Succeeds very well in the rock garden. Color bright blue. Plant three inches deep in shade, half shade, or in the full sun. Mulch in autumn

with leaf soil, leaves or well rotted manure. \$6 per 100; \$57.50 per 1000.

**SCILLA SIBIRICA ALBA.** The fine white form of above. \$6 per 100; \$57.50 per 1000.

**SCILLA SIBIRICA var. Spring Beauty.** A glorified Scilla Sibirica blue. The color is a much clearer blue; the plant produces taller stems with five to six flowers from one bulb. An exceedingly fine novelty. \$12 per 100.

**TRILLIUM ERECTUM.** These Trilliums like a damp, shady situation and blossom early in the spring. Have broad leaves with a dark purple flower. Extra strong clumps, \$1.75 for 10; \$15 per 100.

**TRILLIUM GRANDIFLORUM.** This is the prettiest of all Trilliums. Grows 8 to 15 inches high, producing large white flowers, often 2¼ inches long and 2 inches wide, turning to lilac shade with age. Extra strong clumps, \$1.75 for 10; \$15 per 100.

**TRILLIUM OVATUM.** Related to T. Grandiflorum but with larger flowers which open a pure white, gradually tinge pink and finally become deep wine-purple. \$2 for 10; \$17.50 per 100.

**TRILLIUM NIVALE.** A small white-flowered variety, 3 or 4 inches high, blooming in April. \$2 for 10; \$17.50 per 100.

**TRILLIUM RECURVATUM.** Produces green leaves spotted white with brown-purple blossoms. A beautiful variety which is easily grown. \$2 for 10; \$17.50 per 100.

**TRILLIUM SESSILE.** Very strong grower, producing flower spikes one foot high. Flowers are large of pure white and very fragrant. Very fine for naturalizing. \$2 for 10; \$17.50 per 100.

**TRILLIUM STYLOSUM.** This variety is very effective if planted in large colonies, producing pink flowers in early spring. \$1.75 for 10; \$15 per 100.

We have quoted prices for the very highest quality only. Smaller roots or divisions can be offered at considerably lower prices.

## *Lilies of the Valley*

No dweller in the country should be without a generous bed of Lilies-of-the-Valley. In high and in lowly gardens these simple, fragrant flowers have ever been among the most welcomed of the year. In early times the dried off distilled blossoms were deemed a cure for many "griefs" of the flesh, and while our faith in their potency may be less firm today, surely it is true that when we come unexpectedly upon the slender stems of frosted, scented bells hiding among the bright green leaves we receive refreshment for the mind and the spirit.

The Lily-of-the-Valley is essentially a shade loving plant. Beds should be given a northern or north-

western exposure if possible, and the most desirable soil is a rich, sandy loam. In planting, the clumps should be set about three inches apart and about two inches below the surface. A dressing of well rotted manure and leaf mold in the autumn after the leaves have died down will insure more and finer flowers in the spring. The roots of this fair flower are poisonous.

**LILY-OF-THE-VALLEY CLUMPS.** Their importation having been restricted, they are very scarce. Extra heavy clumps for immediate effect, \$8 for 10; \$35 for 50; \$68 per 100.

*"And the Naiad-like lily of the vale,  
Whom youth makes so fair, and passion so pale,  
That the light of its tremulous bells is seen  
Through their pavilions of tender green."*



# *Colchicum {Meadow Saffron}*

These autumn-flowering bulbs are among the most beautiful of woodland flowers and are at home in either lawn or rock garden. The large crocus-like blossoms appear after the foliage has died down and they maintain a succession of flowers from September till November. We recommend them strongly for planting in grass, in which their delightful flowers may be seen at their best.

**AUTUMNALE.** This lovely free-flowering variety is commonly called "The Autumn Crocus." \$2.75 for 10; \$25 per 100.

**AUTUMNALE ALBUM.** Pure white; this variety increases very quickly and forms good strong clumps. \$4 for 10; \$37.50 per 100.

**AUTUMNALE ALBUM PLENUM.** Exceedingly scarce. A beautiful double white form which is very pleasing. Each \$1.75; \$15 for 10.

**AUTUMNALE MAJOR.** This is one of the largest growing varieties and has massive flowers of rosy purple. Very delightful. \$4 for 10; \$37.50 per 100.

**BORNMULLERII.** One of the very finest species, with long tubed, cup-shaped flowers of rosy lilac coloring. Early flowering. \$4.50 for 10; \$42.50 per 100.

**SPECIOSUM ALBUM.** This is one of the largest flowering varieties. It is pure white and an excellent grower. Very scarce. Each, \$2.25; \$20 for 10.

## **New Varieties of Colchicum**

These new Hybrids are far superior to the species listed above, the flowers being much larger and of better texture. They are still very scarce.

**AUTUMN QUEEN.** An outstanding variety of deepest rose purple. \$5.25 for 10.

**CONQUEST.** Very beautiful, of darkest violet. \$7 for 10.

**LILAC WONDER.** An exceptional colchicum of a beautiful mauve-violet. \$5.25 for 10.

**MR. KERBERT.** A beautiful variety of palest violet self color. \$5.25 for 10.

**PREMIER.** An outstanding colchicum of darkest lilac. Each, \$1; \$9 for 10.

**PRESIDENT COOLIDGE.** A colchicum of merit. In color it is a bright, light violet. \$5.25 for 10.

**THE GIANT.** As its name implies, it is truly a giant flower of purest lilac. \$5.25 for 10.

**VIOLET QUEEN.** Of lilac ground color with violet tints. \$6 for 10.

*"A door may open anywhere;  
Upon a wood or path or lawn  
Or crowded street or road, or there  
Where none pass by from dawn to dawn;  
But, if you'd have a mind at peace,  
A heart that cannot harden,  
Go find a door that opens wide  
Upon a little garden."*

—E. M. BOULT



# "Supreme" Hyacinths for Exhibition

Long lists of varieties only tend to confuse, therefore we offer below only those sorts that careful selection has proven to be the best. Our hyacinths have been awarded highest honors at important flower shows.

## Blue Shades

**DR. LIEBER.** Very early; lavender-blue; heavy, perfect spike. \$2.50 for 10; \$22.50 per 100.

**DUKE OF WESTMINSTER.** Large, deep purplish blue bells with white center. \$2.50 for 10; \$22.50 per 100.

**ENCHANTRESS.** Full, long truss with large bells of a pale porcelain, tinted lilac, with lighter center. \$2.50 for 10; \$22.50 per 100.

**IVANHOE.** The bluest and most satisfactory of the dark shades; late flowering. \$2.50 for 10; \$22.50 per 100.

**KING OF THE BLUES.** Splendid compact truss with fine, bright, dark blue bells; flowers late. \$2.50 for 10; \$22.50 per 100.

**MENELIK.** Large, well formed truss, deep, black-blue bells. \$2.50 for 10; \$22.50 per 100.

**MYOSOTIS.** Most attractive, light porcelain-blue, with splendid spike, well formed. \$2.50 for 10; \$22.50 per 100.

**PERLE BRILLIANTE.** Short, fat spike; a very pretty deep blue shade on the exterior of the bells. \$2.50 for 10; \$22.50 per 100.

## Rose Shades

**HERALD.** A most deserving variety. Possibly the earliest of all hyacinths. The large, delicate, clear rose bells of perfect form are carried on a large fine spike. \$5.25 for 10; \$50 per 100.

**LADY DERBY.** Long, splendid truss, with large bells of a fine rose-pink. \$2.50 for 10; \$22.50 per 100.

**LA VICTOIRE.** Well filled truss, medium-sized bells of fine dark pink; magnificent exhibition variety. \$2.50 for 10; \$22.50 per 100.

**PRINCESS MARGARET.** A very interesting novelty. Extremely large, well formed, soft pink bells, carried on a wide immense truss. It is by far the best pink hyacinth both as to size and color. \$7.25 for 10; \$70 per 100.

## "Supreme" Hyacinths for Mass Plantings in the Garden

Our Hyacinth specialist provides us with Select Quality bulbs most suitable for planting in masses in the garden in varieties, producing flower spikes not quite so long and "top-heavy," so that they will stand up in rough weather.

Those with weak stems have been eliminated, and the following sorts have been carefully selected, having strong

**QUEEN OF THE PINKS.** The pink form of King of the Blues; a lovely bright rosy pink. \$2.50 for 10; \$22.50 per 100.

**VESUVIUS.** Possibly the best variety in this color. A glossy deep carmine pink, the large bells are carried on a large fine spike. \$2.50 for 10; \$22.50 per 100.

## Orange

**ORANJEBOVEN.** Prettiest and daintiest of all Holland Hyacinths; a true ladies' flower; resembles very much the Roman Hyacinth; this beauty is of a ruddy apricot color which appeals to all but those who worship at the shrine of the great god "Size." One of the most charming of the rose-colored sorts. \$4.25 for 10; \$40 per 100.

## Scarlet

**TUBERGEN'S SCARLET.** Fiery scarlet spike of medium size. A splendid novelty of striking color. \$3.85 for 10; \$36 per 100.

## White

**ARENTEINE ARENSEN.** A fine exhibition hyacinth. The large bells are of clearest white and carried on a long well formed spike. \$2.50 for 10; \$22.50 per 100.

**CORREGGIO.** Short, fat spike, with large waxy white bells. Very fine. \$2.50 for 10; \$22.50 per 100.

**LA GRANDESSE.** The finest and most showy pure white; long, full truss of perfect form with fine waxy bells. Grand exhibition flower. \$2.50 for 10; \$22.50 per 100.

**L'INNOCENCE.** Great truss, with large, pure white bells. \$2.50 for 10; \$22.50 per 100.

## Yellow

**CITY OF HAARLEM.** Large, well formed truss of a bright golden yellow. Fine exhibition flower. \$2.50 for 10; \$22.50 per 100.

## Blue Shades

**GRAND MAITRE.** Strong, well filled spike with large, deep porcelain-blue bells. \$2 for 10; \$17.50 per 100.

**KING OF THE BLUES.** Splendid compact truss with fine, bright dark blue bells. \$2 for 10; \$17.50 per 100.



**MYOSOTIS.** Most attractive, light porcelain blue, with splendid spike, well formed. \$2 for 10; \$17.50 per 100.

**QUEEN OF THE BLUES.** Clear porcelain-blue; strong stem. \$2 for 10; \$17.50 per 100.

**SCHOTEL.** Long truss, large bells of Forget-me-not-blue. \$2 for 10; \$17.50 per 100.

#### Rose Shades

**LADY DERBY.** Long splendid truss with large bells of a fine rose-pink. \$2 for 10; \$17.50 per 100.

**LA VICTOIRE.** Strong, stout spike with medium sized bells of a bright carmine-rose. \$2 for 10; \$17.50 per 100.

**MARCONI.** Short spike on stout stem with fine, bright deep rose bells; exquisite for groups. \$2 for 10; \$17.50 per 100.

**PANAMA.** Immense spikes with large bells of lovely rose pink. Very strong grower. A slightly darker Lady Derby. \$2 for 10; \$17.50 per 100.

**QUEEN OF THE PINKS.** A lovely bright rosy pink. \$2 for 10; \$17.50 per 100.

#### White

**LA GRANDESSE.** Strong spike with large, pure white bells. \$2 for 10; \$17.50 per 100.

**L'INNOCENCE.** Strong truss with large, pure white bells. \$2 for 10; \$17.50 per 100.

#### Yellow

**CITY OF HAARLEM.** Strong, large truss of bright golden yellow. \$2 for 10; \$17.50 per 100.

When you order Hyacinths, kindly state whether for forcing or for garden planting, so that the correct material may be selected and packed for you by our specialists in Holland.

### Cynthella Hyacinths

#### (Dutch Roman or Miniature)

This attractive class of hyacinths for planting in clumps in the border or for growing in pots, pans, or boxes, and so valuable for cutting, we offer in the three varieties which our many years' experience has convinced us to be the most satisfactory.

The price for these is considerably less this season so that we may indulge in liberal plantings.

**ARENTINE ARENDSSEN.** Snow-white.

**LAURA.** Violet-blue.

**NIMROD.** Delicate rose. \$12 per 100.  
Case of 300 bulbs, 100 of each, \$35.

#### Cynthella Hyacinths, Prepared

These are most suitable where a Hyacinth of light graceful structure is desired. These can be forced into flower from Christmas on and will provide worthy successors to the French Roman Hyacinths.

We recommend the following varieties

**ARENTINE ARENDSSEN.** Snow-white.

**LAURA.** Violet-blue.

**NIMROD.** Delicate rose. \$14 per 100.



Detail in One of Our Exhibits at the  
International Flower Show  
Received Grand Sweepstakes Award and Gold Medal



# Japanese Irises

The best skill of the ingenious Japanese hybridists has been expended to bring this, their most splendid creation, to a high state of perfection. Today the great blossoms, which seem variously to be fashioned of delicate crepe, of lustrous satin, or rich velvet, exhibit an amazing range of hues, from gleaming white through tender grey to many tones of lavender and blue and violet, from mauve through rose and claret to regal crimson-purple, many of them flushed, dappled, veined or margined with contrasting colors, creating an infinite variety of effects and beauty that has no peer in the world of the garden.

It has been said that to grow the Japanese Iris well and permanently, its head must be in the sunshine and its feet in the water. These conditions are easy enough to supply where there is an available stream or pond-margin, or an overflowing garden pool, but it must be remembered that however ideal the soil conditions, the need of this plant for sunshine is peremptory, and it will not flower where it is overhung by trees or shadowed by buildings. Plant it in the open in moist, heavy soil, keep grasses and weeds from invading the clumps, and there will be little trouble with this haughty beauty. In such positions it is most effective in great plantations away from other plants. Its splendor puts out the light of lesser flowers, and there are none to enter the field with it on equal terms. It is the last of the moisture-loving Irises to flower.

Although the waterside provides the most natural environment for these Irises they may, however, be very suc-

cessfully grown in the garden if a little trouble be taken to insure their comfort. They require a depth of at least twelve inches of soil enriched with well rotted cow manure. In this a shallow basin should be hollowed out and the plant set in the center with an inch of soil over its collar and a light mulch of spent manure or leaves. Planted under such conditions and kept well watered, new shoots soon appear and a glorious flowering the following year is assured. In the spring the mulch may be removed, care being taken not to injure the tender young shoots, and water must be freely given in dry weather until after the flowers are past.

Early August is the best time to plant Japanese Irises, or to lift and divide old clumps. It must be remembered that these proud flowers are even more intolerant than Irises in general of the encroachments of neighboring plants. They need air and sunshine, rich soil and water, and they repay us lavishly for all the consideration they receive.

These Japanese varieties prefer richer, lighter, and moister soils than the Bearded Irises. The best flowers come from plants in an alluvial loam which might be flooded once or twice as the flower-stems push up in May and June. In such soil they will often reach a height of 5 feet, with flowers 9 to 10 inches in diameter. In light soil they can be grown to perfection if the ground is kept hoed or mulched.



View of our Prize Winning Japanese Iris Garden at the 1934 Newport, Rhode Island Summer Show.



# *Scheepers' Supreme Collection of Japanese Irises*

These varieties have never been offered before. They were selected as the choicest from a fine collection in the most famous private Japanese Iris Garden in Yokohama. All were named by us in honor of prominent flower lovers during the Summer Show in Newport, Rhode Island, where they were exhibited. Japanese Irises are best

planted during August or September.

They may be inspected at flowering time in "Paradou," our display gardens, Brookville, Long Island. Visitors' courtesy cards with information as to best flowering time, will be mailed to you or your friends on request.

**MRS. HAROLD BROWN.** Single. Very difficult to describe. The color is white slowly suffusing toward the edges of the petals from a light to a deep pink. Each \$1.

**MRS. CHARLES H. SCHWEPPE.** Double. Very beautiful and unusual. The color is white with a slight porcelain hue and slight yellow markings in center. Each, \$1.

**ANNE CORNING.** Double. The softest pink we have seen in any Japanese Iris. Light yellow markings in center. A very beautiful and unusual Iris. Each, \$1.50.

**MAUDE RICHEY SEABURY.** Double. Very large flower of a soft creamy white. Petals of fine substance. Very attractive. Each, \$1.50

**MRS. WALTER B. JAMES.** Single. The color is best described as being white, overlaid with a sheen of greyish slate. Very attractive. Each, \$1.

**MRS. MICHAEL M. VAN BEUREN.** Double. The color of this beautiful Iris is a satiny, deep self-colored royal-purple. The variety is very unusual on account of the very prominent standards. Each, \$1.

**ANNIE BURR JENNINGS.** Double. A most beautiful self pink. An Iris greatly admired and a distinct break in Japanese Irises. Each, \$1.

**MRS. HAMILTON FISH WEBSTER.** Double. A most beautiful and unusual Iris. Ground color is white overlaid toward the center with deep purple which gradually lightens toward edges of petals. Entire flower is distinctly veined purple. Each, 75c.

**ANNA CASE MACKAY.** Double. Very early. The ground color of this Iris is pure white suffused toward edge of petals to a bright crimson. Very unusual. Each, 75c.

**EDITH WETMORE.** Single. The huge flowers which are of good substance are white, suffusing toward the edges to a soft royal-purple. Very beautiful and unusual. Each, \$1.

**MRS. CHARLES E. MERRILL.** Double. A blending of colors difficult to describe. Light blue suffusing toward edges to a deep claret with light yellow markings toward center of petals. Each, \$1.

**MADAME H. M. van HAERSMA de WITH.** Double. The ground color of this unusual Iris is white suffusing to a lighter blue toward edges of petals with entire petals very distinctly veined a deeper blue. Standards are a deep royal-purple. Each, \$1.

**GEORGE K. MORROW.** Double. Clear and purest white with slight yellow markings in center. A flower of wonderful keeping qualities. Each, 75c.

**MRS. L. E. WOODHOUSE.** Double. Soft blue turning to a deep purple toward edges. Very fine. Each, \$1.50.

**PINNACLE.** Double. Very deep mahogany self color with light yellow center. Very attractive. Each, \$1.

Collection of one each of the above 15 choice varieties, strong plants, guaranteed to flower the first season after planting.

Catalogue value, \$15.75—Special price, \$13.50.



# Siberian and Orientalis Irises

These two are closely related and our best modern varieties in this section are hybrids of the two. Theoretically the Orientalis is a larger flowered "Sibirica," but the cross-breeding of the two makes it impossible to separate them. They are quite hardy and some eminent authorities consider them the most elegant of all Irises. They are of the easiest culture and are prodigious bloomers, an established clump often producing as many as 40 or 50 flowering

stalks. They are adaptable to almost any location and will do equally well in full sun or partial shade. They grow on long stems, have ornamental grass-like foliage, and are also excellent cut flowers. They bloom about the same time as the Tall Bearded Irises. They are especially fine for landscape work and nothing is finer for bordering a pond or brook, provided they are kept just above the water line.

**BLUE FLAME.** One of the most striking of all Siberian Irises. Its coloring is a very soft sky-blue. The flower is of perfect form and heavy texture and carried on a tall strong spike. Each, \$1; \$9 for 10.

**BLUE HERON.** This variety is especially handsome. A large flower of perfect form, the styles are almost pure white, just tinged the palest blue. These clean cut styles stand out in the sharpest contrast against the flaring medium violet falls and erect violet standards; this striking contrast tends to lend a distinctive charm to this very fine iris. Each, \$1.50; \$12.50 for 10.

**BLUE OWL.** An exquisite rich blue variety of fine form and texture and graceful poise. There is a beautiful triangular zone of white at the throat, veined purple and blending into a prominent bronze throat, veined brown. The soft blue styles are lighter than the balance of the flower and add to its attractiveness. Each, \$1; \$9 for 10.

**EMPEROR.** This is a noble form of Orientalis collected by E. H. Wilson in Japan and is the finest of the dark flowering type. The flowers are large, of good form and texture and the color is a uniform deep violet-blue. Height, 48 inches. Each, \$0.50; \$4 for 10; \$37.50 per 100.

**GRANDIS.** This variety has rich violet standards and styles with white falls beautifully veined rich violet, and bronze veining at the throat. Very unusual on account of these markings on the falls, which are prominent because they hang straight down. Height, 45 inches. Each, \$0.50; \$4 for 10; \$37.50 per 100.

**HEAVENLY BLUE.** A glorious rich blue iris and one of the best of this group as well as one of the newest. Very strong and vigorous grower. Each, \$1; \$9 for 10.

**KINGFISHER BLUE.** A seedling of Perry's Blue and a great improvement on that variety, being about twice as large, the color being lighter and brighter and with less reticulations. Height, 54 inches. Each, \$0.75; \$6 for 10; \$57.50 per 100.

**PEGGY PERRY.** One of the largest and most attractive of this group. The petals are somewhat ruffled and the flower has an airiness and grace that is most appealing. It is quite early. The flowers are of a uniform rich violet-blue, with a prominent white spot in the center of the lower petal, veined the color of the petal. The throat has rich golden brown veining. Each, \$0.50; \$4 for 10; \$37.50 per 100.

**PERIWINKLE.** Without doubt the largest and finest dark variety in the Siberian section and when it is more plentiful, so that it can be sold at a moderate price, it will be a great acquisition. Of perfect form and unusually heavy substance. Darker than "Perry's Blue," with a beautifully marked throat. Height, 38 inches. Each, \$1; \$9 for 10.

**PERRY'S BLUE.** This has been the most popular of all the Siberian Irises and it surely justifies its popularity as it is a very lovely Iris. The color is a beautiful shade of sky-blue, with slight white markings on the falls. It is considered by many authorities the finest of all Siberian Irises. Height, 48 inches. Each, \$0.50; \$4 for 10; \$37.50 per 100.

**SKYLARK.** In our judgment the finest of the light colored Siberian Irises. It is an exquisite flower of large size and good form. Each, \$0.50; \$4 for 10; \$37.50 per 100.

**SNOW QUEEN.** This is a very handsome snowy white flower, with rich yellow markings at the throat. It is large enough to be mistaken for a Japanese Iris and is very free flowering. The flower is of a firm, waxy texture. It is the best white and should be in every collection. Each, \$0.50; \$4 for 10; \$37.50 per 100.

**SUNNYBROOK.** An exquisite shade of soft Alice-blue with a brighter blue midsection to the styles, nicely displayed by open but firmly held standards. Good form and substance. Height, 36 inches. Each, \$0.50; \$4 for 10; \$37.50 per 100.

**WHITE DOVE.** A pure white seedling of the well known Siberian Iris Emperor and it takes on the form, texture and shape of Emperor. A fine white Iris. Each, \$1; \$9 for 10.

"Collection of one each of the preceding 14 very fine varieties of Siberian Iris (Catalog value \$10.75) for \$9."



# Bulbous Irises

Bulbous Irises of the Dutch and Spanish groups have become very popular. Their flowers, graceful as orchids, are valuable as cutflowers and also lend themselves admir-

ably for display plantings in the flower garden. On account of their wide color range in pastel shades, beautiful color pictures can be created.

## Dutch Irises

(IRIS HOLLANDICA)

A strain bearing large flowers of graceful, refined form and flowering about two weeks earlier than the Spanish types.

**A. BLOEMARD.** Very large flower, early, Standards dark purplish blue, falls lighter blue. Very attractive. \$0.90 for 10; \$6.50 per 100.

**ABRAHAM STORCK.** A very large iris and the best blue we know, tall and vigorous grower. Standards steel-blue, falls very dark blue. \$1.45 for 10; \$12 per 100.

**DIRK DALENS.** Very attractive flower with large pale blue standards and darker blue falls with a very narrow orange stripe through center. \$1.15 for 10; \$9 per 100.

**GOLDEN BRONZE.** A very beautiful iris. Standards dark violet, edged bronze, falls attractive golden bronze. Strong and vigorous grower. \$1.15 for 10; \$9 per 100.

**GOLDEN GLORY.** Very strong and vigorous tall grower with standards a golden yellow and slightly deeper falls. \$0.85 for 10; \$6 per 100.

**HOBBEEMA.** A very beautiful iris which created very favorable comment at the recent International Flower Show in New York, where it was awarded highest honors. Standards are white tinted lavender with pale yellow falls. \$1 for 10; \$7.50 per 100.

**JACOB DE WIT.** A very early iris of remarkable substance. Both standards and falls are of a uniform dark blue. A very fine iris. \$0.85 for 10; \$6 per 100.

**J. MATHAM.** A beautiful novelty introduced very recently of a pale cornflower-blue self-color. Strong and vigorous grower. \$0.90 for 10; \$6.50 per 100.

**JAN WEENIX.** Extra strong and vigorous grower, one of the tallest of the Dutch Irises. Standards and falls of a soft lavender-blue self color. \$1 for 10; \$7.50 per 100.

**LEONARDO DA VINCI.** A very beautiful and refined flower. Standards, lemon-yellow. Falls, deeper yellow. \$0.85 for 10; \$6 per 100.

**S. DE VLIENER.** Very large and beautiful flower, very broad and strong light violet-blue standards, falls soft sky-blue with narrow orange stripe through center. \$1 for 10; \$7.50 per 100.

**THÉRÈSE VAN DUILL SCHWARTZE.** A very refined flower. Standards pale cornflower blue, falls pure white with narrow orange stripe. \$0.85 for 10; \$6 per 100.

**WHITE EXCELSIOR.** Very early. Of very good form and substance both standards and falls of the purest white. \$0.75 for 10; \$5 per 100.

**W. VERSCHUUR.** An excellent variety. Standards violet, tinged bronze, falls bronze. A very strong and vigorous grower. \$1 for 10; \$7.50 per 100.

**W. ZUIDERVELD.** Very large flower of fine proportions and substance of a uniform light bluish violet. \$1.30 for 10; \$10.50 per 100.

**YELLOW QUEEN.** A very fine flower of uniform golden yellow. Very tall and early. \$0.90 for 10; \$6.50 per 100.

## Spanish Irises

(IRIS HISPANICA)

Spanish Irises are bearing somewhat smaller flowers than those of the Dutch group. They are especially valuable on account of their later flowering.

**CAJANUS.** Very fine canary-yellow with orange-yellow blotches on the falls. \$0.75 for 10; \$5 per 100.

**GOLDEN LION.** A very beautiful iris. Tall and vigorous grower, standards a refined lemon-yellow with golden yellow falls. \$2.75 for 10; \$25 per 100.

The varieties offered here are in our opinion the finest in this collection.

**KING OF THE BLUES.** Very fine deep blue. A very strong and vigorous grower. \$0.75 for 10; \$5 per 100.

**KING OF THE WHITES.** Flowers are of the purest white with small orange blotch on the falls. \$0.75 for 10; \$5 per 100.

**PRINCE HENRY.** Flowers are large of a beautiful bronze. \$0.75 for 10; \$5 per 100.



# The Two Outstanding Lily Novelties of the Year

The two novelties listed on this page should prove of interest to the Lily enthusiast. They have received highest honors and can be recommended to anyone by reason of their easy culture.

## LILIUM HENRYI Variety "John T. Scheepers"

This variety was exhibited at the 1933 Royal Horticultural Society Lily Conference in London as *Lilium Henryi*, variety *citrinum*, and created a sensation at that time. This Lily is a cross between *Lilium Henryi* and *Pardalinum Roezlii*. It is of the most refined citron-yellow with bright red stamens. The color contrast between the stamens and the flower is very pleasing. The flowers are larger than *Lilium Henryi*, but otherwise it has the same growth and habit and flowers at the same time.

A few bulbs will be released this fall at \$100 each.

## LILIUM J. G. CREELMANNII

This Lily is probably the most outstanding of the "*Lilium Regale* reproductions." The flowers are of an immense size, often measuring eight

inches in length and are carried on extra strong sturdy stems, five to six feet high with as many as fifty flowers and buds on one spike.

Many flowers bloom at one time which adds to the value of this Lily. In growth and habit it resembles *Lilium Regale*. The bronzy tones of the reverse side of the petals are more pronounced than in *Lilium Regale*. The inside of the trumpet also shows a more intense yellow than *Lilium Regale*.

A very strong and vigorous grower. A Lily which is practically fool proof, of easiest culture, and which will probably take the place of *Lilium Regale* in time to come. It comes into flower from three days to one week after *Lilium Regale*.

This Lily is truly an Aristocrat of the Garden.

We have a few extra large selected bulbs. Each, \$5. Also smaller, but strong flowering bulbs. Each, \$3.

# The Famous Backhouse Hybrid Lilies

Lilies are so incomparably beautiful that everyone who sees them at once wishes to grow them. There is no reason why the Lilies mentioned herein should not be grown in all gardens. They are perfectly hardy and easily grown, and indeed it may be said that no garden is complete without them.

"I was sitting on the lawn of Sutton Court in company with Mr. R. O. Backhouse. The purpose of my visit was to enjoy a hurried look at his many fine seeding lilies—tall, stately groups of lilies, five to six feet high, in perfect health, carrying great stems of flowers in all shades of color. Close by was *L. Hansonii* and seedling forms of *L. Martagon* and its variety *dalmaticum*, from which they had originated. In vigor, stature, size of flowers and diversity of color, they far exceed the original types.

It is well known that the late Mrs. R. O. Backhouse originally crossed *L. Hansonii* with various types of *L. Martagon*, intercrossing the results, so that now, in the second and third generation, many new types have appeared, some after the *L. M. var. dalmaticum* coloring, fully six feet high, the slender inflorescence typical of *L. M. var. dalmaticum* taking on a bolder habit with more paniced stem (the influence of *L. Hansonii*), while in others there are all shades of yellow from deep orange to pale citron and white, and of *L. Hansonii* substance. In the Mrs. R. O. Backhouse type they lean more to *L. Hansonii* in shape of spike—the variation in spotting being most marked, from a few light spots to the other extreme.

## BROCADE

A most effective garden lily, vigorous and very free-flowering, growing to a height of 6 feet. Each inflorescence carries a multitude of orange-yellow flowers, overlaid with rosy pink on the outside and the interior marbled pink with chocolate spots on a yellow ground. The flowers are remarkable for their broad perianth segments. Fall planting, about 8 inches deep; June-July flowering. A few specimen bulbs, \$10 each. Extra selected bulbs, \$7.50 each. Smaller bulbs, \$4 each.

Some of the *L. Martagon* types are so freely spotted as to be practically covered. The pollen also varies from pale yellow to crimson. Again, the spotting occasionally shows on the outer petals, which are generally of a different shade.

Imagine the beauty of a bed of one hundred spikes, four feet to six feet high, no two the same! The finest types are being selected and grown, but Lily propagation is none too fast in this country. Still I look forward to the time when these Lilies will be available in quantity. Their constitution is good. They are not miffy in any way, and they come of a class that is, in the main, suited for ordinary garden culture.

I venture to predict that, as time goes on, these Backhouse Lilies will become firmly established in our gardens, and that garden lovers will be grateful for their introduction, and will give them a warm welcome on account of their increased vigor and diversity of color."

ROBERT W. WALLACE,  
Tunbridge Wells, England.

The varieties of these hybrids now arriving at maturity, selected by Mr. Wallace exclusively for us from stock made available by Mr. Backhouse, are distinct and fine; they have the different colors of the first parents, i. e., purples, yellows, bronzy pinks, whites and lemons, and many beautiful combinations of those shades.

We are offering these in limited number to clients of record. They need to be established a year before blossoming in their full glory.

## GOLDEN ORB

Light, clear, straw-yellow with green center, freely and conspicuously spotted with small crimson dots which are darker in color towards the center of the flower. The blooms are fleshy, about 3 inches across and pendant at the end of the stalks.

The perianth remains flat till the pollen is ripe, after which the segments recurve somewhat. The exterior of the flower is ribbed with deep golden brown. Fall planting, about 8 inches deep; June-July flowering. Extra selected bulbs, \$15 each. Smaller bulbs, \$10 each.



## Selected Backhouse Hybrid Lilies

### MRS. R. O. BACKHOUSE

A tall and stately Lily growing upwards of five feet high, bearing from 15 to 30 flowers of an orange-yellow tone, lightly spotted with purple.

The general form of the flower is somewhat reminiscent of *Hansonii* but the petals are wider and stouter and the flower does not reflex so much as in *Martagon*; this lily is most distinct in character and we look upon this as one of the finest hybrids yet raised.

Fall planting, about 8 inches deep; June-July flowering. A few specimen bulbs, \$10 each. Extra selected bulbs, \$5 each. Smaller bulbs, \$3 each.

### SCEPTRE

One of the best of the seedlings raised by Mrs. Backhouse and one of the last to flower. As grown in our trial garden the plants were over 6 feet in height. This variety is very vigorous and free-flowering.

It must be seen growing to appreciate its effectiveness. The flowers, which are star-shaped, are pinkish buff and freely covered with small dark spots. When better known it will prove a great acquisition for the hardy flower border.

These beautiful lilies are for the exclusive gar-

den, for the gardener who wishes to surround himself with the choicest flowers and plants.

Fall planting, about 8 inches deep; June-July flowering. A few specimen bulbs, \$10 each. Extra selected bulbs, \$7.50 each. Smaller bulbs, \$4 each.

### SUTTON COURT

Somewhat similar to the foregoing variety, but stronger in growth. The flowers are slightly smaller, more reflexed and heavily spotted with purple, whilst the exterior of the petal is distinctly shaded with pink, the internal surface being of a light yellow, the whole inflorescence being of a most distinct and pleasing appearance.

Fall planting, about 8 inches deep; June-July flowering. A few specimen bulbs, \$10 each. Extra selected bulbs, \$6 each. Smaller bulbs, \$4 each.

### IN MIXTURE

There is such a great variation in lovely shadings and forms that all can not be named. We now offer a Superior Mixture, consisting of carefully selected colorings; a splendid investment that will increase in value and beauty from year to year. Only limited stock is available and we recommend that reservations be made early. \$25 for 10.

## June Flowering Lilies

### LILIUM CANDIDUM

#### (ASCENSION OR MADONNA LILY)

The Lily of antiquity was undoubtedly *L. Candidum*. In mythology this white Lily was supposed to have sprung from the milk of Hera. As the plant of Purity, it was contrasted with the Rose of Aphrodite. All through the Middle Ages this Lily was the symbol of heavenly purity.

Maeterlinck refers to this loveliest of Lilies when he says: "The great white Lily, the lord of the gardens, the only authentic prince among all the commonalty issuing from the kitchen garden, the ditches, the copses, the pools and the moors, among the strangers come from none knows where, with his invariable six-petaled chalice of silver, whose nobility dates back to that of the Gods themselves, the immemorial Lily raises his ancient sceptre, august, inviolate, which creates around it a zone of chastity, silence and light."

Be very careful that you plant the right type of this beautiful lily. There is an early flowering variety which is grown in the south of France. These should be used exclusively for forcing; if planted in the garden they are prone to disease and are unsatisfactory.

The true type to use for the garden is the *Lilium Candidum* from the North of France. This bulb is easily recog-

nized by its composition of white, fleshy scales, while the southern France sort has very light pink, loose scales.

Plant in ordinary garden soil, without fertilizer, surrounding the bulb with sharp sand and placing it somewhat on its side. An open, full exposed place is best for it, though it will also succeed in somewhat shaded situations.

After it has become established, leave it alone as it resents disturbance at the roots; the bulb requiring shallow planting with the top only an inch or two below the ground, the roots establish themselves very close to the surface; for this reason weeding or scratching near the lilies should be done most carefully. If necessary to transplant, do so as soon as the flower-stems die down.

This Lily of all Lilies should be planted in quantity in every garden—emblem of purity, the inspiration of poet and painter for centuries, and a benediction in the garden when June is melting into July—their delicious fragrance is not equalled by any other lily.

To create a beautiful picture plant strong clumps of *Delphinium Bella Donna* or English Hybrids of *Delphiniums* in light blue varieties with these *Madonna Lilies*.

## True Northern France

### LILIUM CANDIDUM

We deliver these "true Northern France" Lilies in their original French hampers.

Hamper of 100 Extra Heavy, Selected Bulbs, \$48.

Hamper of 50 Extra Heavy, Selected Bulbs, \$25; \$6 for 10.

Hamper of 100 Selected, slightly smaller bulbs, \$38.

Hamper of 50 Selected, slightly smaller bulbs, \$20.

Hamper of 100 Strong Quality, good flowering bulbs, \$25.

Hamper of 50 Strong Quality, good flowering bulbs, \$13.

Occasionally we receive a limited number of

bulbs of enormous size which we offer under the name of Special Stock, at \$7.50 for 10; \$30 for 50; \$59 per 100.

### BROWNII (True)

One of the finest and most satisfactory lilies. The flower-stem is 3 to 4 feet tall, is tinged with reddish brown and the foliage is long, narrow, gracefully curved, and of a deep green tint. The trumpet-shaped flowers are large, well formed, and of great substance, lasting a long time when cut.

These massive, deliciously fragrant flowers open pale yellow, fading to a creamy white of



great purity. The outside of the trumpets is streaked with reddish brown. Plant eight inches deep in light, sandy loam or peat and give good drainage; in open or semi shade.

A grand plant for light soils, being content even with almost pure sand with a little manure; yet succeeds in stiffer land and in heavy soil. Stem-roots; fall planting; June-July flowering.

Please do not confuse this beautiful Lily with a Chinese variety of the same name, which is not pleasing or satisfactory in the garden. Extra heavy, selected bulbs, \$2 each; \$17.50 for 10. A smaller bulb at \$1.25 each; \$10 for 10.

**CANADENSE.** Broad, funnel-shaped, drooping flowers, varying from yellow to orange; spotted inside; graceful and pretty. Fine among Azaleas, in damp peat beds or leaf mold. Excellent for naturalizing. Base-roots; fall planting, 5 inches deep; June-July flowering. Extra selected bulbs, \$4.50 for 10; \$42.50 per 100. A smaller, good flowering bulb, \$3 for 10; \$27.50 per 100.

**CANADENSE FLAVUM.** Broad, funnel-shaped drooping flower on longish stalks about three feet high. Almost bell-shaped with the ends of the petals only very slightly turned back. Golden yellow, handsomely spotted inside. Graceful and pretty.

Fine among Azaleas, in damp peat or very light loam or leaf mold. Excellent for naturalizing in thin woodland. Base-roots; fall planting, about 5 inches deep. June-July flowering. Selected bulbs, \$4.50 for 10; \$42.50 per 100. A smaller, good flowering bulb, \$3 for 10; \$27.50 per 100.

**CHALCEDONICUM.** Grows to a height of 3 to 4 feet. Flowers in loose clusters, small but symmetrical in shape, with recurved petals; bright red and waxlike. Does splendidly in properly drained heavy soil and even in clay; should not be disturbed when once established. Often flowers very poorly the first season, but nothing is more lovely than a clump of this lily in bloom when established. Base-rooting; fall planting. 5 inches deep; June-July flowering. Extra Selected bulbs, \$2.50 each; \$22.50 for 10; \$197.50 per 100. A smaller, strong flowering bulb, \$1.75 each; \$15 for 10.

**CROCEUM (True).** A favorite with those who like its color. Bright orange flowers are carried upright; very hardy, thriving in any soil in a sunny garden border or among shrubs in half shade. Is at its best toward the end of June and early July.

It seems to bear its well filled heads of great orange cups as willingly in a city plot as in a country garden, while its leaves show by their deep green color, and the whole plant by its robust health and vigor, how little it worries about conditions of town life that are so surely fatal to many plants. Stem-rooting; fall planting, five inches deep. True stock. Extra selected bulbs, \$5 for 10; \$47.50 per 100.

**ELEGANS IN VARIETY.** The number of forms and varieties is legion, varying in color from pale lemon-yellow to rich orange-brown, embracing various tints of orange to almost red and

from soft apricot to approaching crimson; varying also in flowering season. A copious planting of these in mixture through a colony of Funkia or White Heuchera, produces a most effective display, continuous for a considerable period.

Stem-roots; plant in fall or early spring, 8 or 9 inches deep, in sunny situation; June-July flowering. These lilies are so frequently mixed in their colors that we have decided to offer them in mixed varieties. Extra heavy bulbs, \$2.50 for 10; \$22.50 per 100.

**LILIUM ELEGANS OGON.** Possibly the finest of all Liliium Elegans. In color it is of the purest golden yellow. Plants are vivid yellow with dark green foliage which offers quite a contrast with the yellow of the flowers. A lily that should be in every collection, fine either as a pot plant or for borders. \$3 for 10; \$27.50 per 100.

**HANSONII.** In every way most desirable, being not particular in its cultural requirements and extremely handsome in flower; does well in light loam. Plant among shrubs and low plants to protect young shoots, this being one of the earliest lilies to appear in spring. Does as well in thin woodland as it does in the border.

Protect from full sun, the flower otherwise will bleach a little. The stem reaches a height of 4 to 5 feet, carrying blossoms 2 inches across, regularly reflexed, the petals being of a bright orange-yellow, spotted more or less with brown; of a waxy texture. Stem-roots; fall planting only, 10 inches deep; June flowering. Extra heavy, selected bulbs, \$9.75 for 10; \$95 per 100. Selected bulbs, \$6.50 for 10; \$62.50 per 100; a smaller, good flowering bulb, \$4.75 for 10; \$45 per 100.

**HUMBOLDTII MAGNIFICUM.** Stout, erect stem, with whorls of leaves at regular intervals. Numerous drooping flowers borne in loose, triangular clusters of brilliant golden yellow, spotted with purple on the reflexed petals; showy; prefers deep, peaty soil, but will grow in any well drained soil, which must be deep, for the roots go straight down. It produces a splendid flowering plant; five feet high.

Base-roots; fall planting only, 4 inches deep; June-July flowering. Extra heavy, selected bulbs, \$9 for 10; \$87.50 per 100.

**JAPONICUM (Formerly Listed as Krameri).** This is one of the few "pink" lilies of our gardens, and a very lovely thing it is. The flowers are carried horizontally on stems 3 feet high. Somewhat capricious in its requirements. The soil generally advised for it is a light loam, but an amateur who grows lilies with great success says that the color is finest in peat.

It is a lily so beautiful and of a color so lovely and unusual that it is worth taking pains with. It roots from the stem as well as from the bulb, and therefore should be planted rather deep, fully eight inches. It has been known to give as many as seven blooms to a stem, though one and two flowers to a stem the first year is usual.

The funnel-shaped, finely formed flowers are six inches or more in length, and as much across, of a beautiful clear pink color often shaded blush. Late fall or early spring planting; stem-roots. We recommend that this lily be planted in pots and started in cold frames; then plunge later, pot





*Lilium Hansonii*

See Page 42



*Lilium Testaceum*

See Page 43



*Lilium Sceptre*

See Page 41



*Lilium Monadelphum Szovitzianum*

See Page 43





Backhouse Hybrid Lilies Growing Luxuriantly in Slight Shade



Lilium Hansonii Naturalized



Our Lilies "at home" in one of the finest Long Island gardens





and all, in the places set aside for them, giving them a little protection from the mid-day sun. Extra heavy, selected bulbs, \$6 for 10; \$57.50 per 100. A smaller, strong flowering bulb, \$3 for 10; \$27.50 per 100.

**MARTAGON.** Strong growing lily, producing from twenty to thirty light spotted purple flowers when established; very graceful, vigorous and floriferous. Base rooting; fall planting only, 6 inches deep. Extra selected bulbs, \$3.50 for 10; \$32.50 per 100.

**MARTAGON ALBUM.** There are few more beautiful things than the White Martagon Lily when seen in its best form and thriving in such a way as to reveal its full beauty. The appearance of these lilies is graceful and delightful in the extreme.

Rising on slender stems, 4, 5, and sometimes nearly 6 feet high, the numerous drooping, wax-like, white Turk's Cap flowers, with yellow-tipped stamens, look inexpressibly fascinating. The small flowers are symmetrical in shape, with reflexed petals and are borne in terminal pyramid-shaped clusters.

The White Martagon appears to flourish best where its lower growths have the benefit of the partial shade afforded by herbaceous plants or shrubs, and it never looks better than when springing through and towering over some of moderate vigor. They like loamy soil, but they are finest in cool and damp places.

The Martagon Lily does wonderfully well in the shade of trees, and the white variety is no exception in this respect. Few, if any stem-roots; fall planting only, 6 inches deep; June flowering. Extra heavy, selected bulbs, \$10 for 10. Smaller, strong flowering bulbs, \$7.50 for 10; \$72.50 per 100.

**MARTAGON DALMATICUM.** Strong growing, stately lily; the stems rise as tall as 6 feet, with correspondingly large flower clusters once the plant is happily established. The flowers are a deep vinous purple of waxy texture and shine as if varnished. Base-roots; fall planting, 6 inches deep; June flowering. Extra heavy, selected bulbs, \$4 each; \$37.50 for 10.

**MONADELPHUM SZOVITZIANUM.** One of the finest lilies and not difficult to grow. It reaches a height of 4 to 6 feet. The stems are stout and the numerous leaves are pale green. As many as twenty flowers are sometimes borne on one stem of established bulbs, forming pyramid-shaped clusters.

The flowers are drooping, with the segments of a thick wax-like texture, regularly recurved. They vary from a pale citron-yellow to deep yellow. The first season planted it sometimes does not show much growth above the ground, but the following season it will grow freely.

Once established, it dislikes being tampered with. This beautiful and fine lily of gardens must not be confused with a variety called Monadelphum, which is collected in Russia and is inferior to Szovitzianum. Base-roots; fall planting only, 4 inches deep; early June flowering. Extra heavy, selected bulbs, \$2 each; \$17.50 for \$10. Smaller, strong flowering bulbs, \$10 for 10; \$97.50 per 100.

**PARVUM LUTEUM.** This beautiful lily is far too little known. It grows 4-5 feet high when established and its clear deep yellow flowers are beautifully spotted. Base-roots; fall planting only; June-July flowering. Extra heavy, selected bulbs, \$6 for 10; \$57.50 per 100.

**PYRENAICUM AUREUM.** The Yellow Turk's Cap Lily, which is of easy culture. The flowers are greenish yellow, spotted brown with red anthers. Base-rooting. Plant in fall only, 5 inches deep; June flowering. Height, two to three feet. Extra heavy, selected bulbs, \$1.25 each; \$10 for 10; \$97.50 per 100.

**PYRENAICUM RUBRUM.** The scarlet form of the above. The flowers are spotted maroon. Extra heavy, selected bulbs, \$1.75 each; \$15 for 10; \$147.50 per 100.

**TENUIFOLIUM.** A charming little early flowering lily with strongly recurved petals of waxy texture; deep scarlet. A gem in the rock garden as in the border. Likes a cool, damp loamy soil and partial shade. Stem-roots; fall planting only, 7 inches deep; early June flowering. Extra selected bulbs, \$3.25 for 10; \$30 per 100. A smaller, good flowering bulb, \$2.15 for 10; \$19 per 100.

**TENUIFOLIUM GOLDEN GLEAM.** A beautiful, robust, and a floriferous hybrid of this type, bearing numerous flowers of a pure apricot-yellow. A very elegant and fine plant. Flowers splendidly every year and is always much admired. Stem-roots; fall planting only, 7 inches deep; early June flowering. Extra heavy, selected bulbs, \$4 for 10; \$37.50 per 100. A smaller, good flowering bulb, \$2.50 for 10; \$22.50 per 100.

**TESTACEUM.** This beautiful lily is also known as "Excelsum" and as the "Nankeen Lily." One of the choicest border lilies. The dull apricot tone, set off by orange anthers, puts it in a color class by itself. There is a tender warmth that must be allowed for when thinking of the color of this charming lily. It is the most graceful of all.

It often grows from 5 to 6 feet high when established, and the horizontally poised heads of drooping flowers wave in a breeze in a graceful way. It is beautiful for every kind of garden use but loses effect, because of its tender coloring, if planted in a mixed border with brighter flowers.

In combination with light-shaded Delphiniums or with the Madonna Lily, which it resembles in the disposal of its leaves on the stem and in a certain grace of habit—it is most effective. It is also a good lily for pot culture. It has the texture of *Lilium Candidum*, with reflexed petals.

It does well under the same conditions as *Candidum*, and should be planted the same depth, two inches below the surface of the ground. Base-roots; fall planting only, 2 inches deep; June-July flowering. Extra heavy selected bulbs, \$2 each; \$17.50 for 10. Small, but good flowering bulbs, \$1.25 each; \$11 for 10; \$100 per 100.

**UMBELLATUM.** This group of lilies consists of Hybrids from *Lilium elegans*; they are free-flowering with large umbellate heads of flowers, easily grown. Stem rooting. Plant four inches deep, Fall planting only; June flowering.



**UMBELLATUM APRICOT.** A very beautiful and distinct variety. The flowers are of a lovely shade of delicate apricot-yellow borne in large heads. This lily is at its best when grown in a cool shady position. Extra selected bulbs. Each, \$1.25; \$10 for 10.

**UMBELLATUM GOLDEN FLEECE.** Beautiful and distinct variety. A striking break from the usual red and orange tones of the Umbellatum group, this fine variety has large umbellate heads of clear golden yellow flowers with a suggestion of scarlet at the tips of the petals. It is very effective as a border plant and possesses a strong constitution. Extra selected bulbs, \$1.25 each; \$10 for 10.

**UMBELLATUM GRANDIFLORUM.** A very free-flowering lily of easy culture. Carries large umbellate heads of light orange-red flowers. Extra selected bulbs, \$3 for 10; \$27.50 per 100. A smaller, good flowering bulb, \$2 for 10; \$17.50 per 100.

**UMBELLATUM INVINCIBLE.** A magnificent form with very large, massive, broad petaled flowers of brilliant rich orange shading to glowing red at end of petals. Extremely handsome. Extra selected bulbs; Each, \$1.25; \$10 for 10.

**UMBELLATUM MAHOGANY.** The deepest in color yet raised. Comparatively small in stature with heads of fine broad petaled flowers, deep

glowing crimson-lake, deepening to a rich mahogany-crimson as the flowers pass over. Extra selected bulbs. Each, \$1; \$9 for 10.

**UMBELLATUM ORANGE KING.** A superb lily with very large heads of massively shaped flowers, richest glowing orange at the center deepening in shade towards the edge of the petals and slightly spotted with blackish purple. The flowers are very large, with broad smooth petals, having a very finished appearance. Extra selected bulbs. Each, \$1.25; \$10 for 10.

**UMBELLATUM SPLENDIDUM.** A magnificent variety growing 2 to 2½ feet high, with large umbellate heads of brilliant vermilion-orange flowers shading to a rich coppery crimson tone. As a border plant the color effect is most striking and unusual. The flowers are unspotted or nearly so, and the points of the petals are slightly reflexed. Extra selected bulbs, \$1.25 each; \$10 for 10.

**WASHINGTONIANUM.** A beautiful lily with fragrant drooping white flowers on a stem four to five feet in height. The reverse of the flowers has a tinge ranging from light pink to a deep wine color. This lily requires a thoroughly drained situation; it does exceedingly well when once established. Stem rooting; June-July flowering; plant in fall only, 10 inches deep. Extra selected bulbs, \$1.50 each; \$12.50 for 10; \$110 per 100. Smaller, good flowering bulbs, \$8 for 10; \$77.50 per 100.

## July-Flowering Lilies

**CENTIFOLIUM.** Found in a cabbage garden by the late Mr. Reginald Farrer, in his first expedition to China. In general appearance it resembles a huge *Lilium Sulphureum* or *Brownii*, with long tubular white flowers, colored and streaked externally with brown and flushed internally with yellow at the base of the trumpet. This is a giant amongst lilies, and has proved quite hardy.

Fall planting only, 8 inches deep; July-flowering. Extra selected bulbs, \$4 each; \$37.50 for 10; Smaller, strong flowering bulbs, \$2 each; \$17.50 for 10.

**GRAYI** Beautiful, satisfactory lily to grow in damp, peaty soil; thimble-shaped flower of rich red, spotted with maroon. Culture quite easy. Height, 4 feet. Base-roots; fall planting only, 4 inches deep; July-flowering. Selected bulbs, \$3.50 for 10; \$32.50 per 100.

**KELLOGGII.** A rare and beautiful lily, growing 2 to 3 feet high, bearing closely recurved pink flowers like those of the Turks' Cap Lily. Very graceful and fragrant. It belongs to the Martagon group and succeeds best on the outskirts of a woodland where the roots are shaded. Base-roots; fall planting only, about 5 inches deep; July flowering. A few specimen bulbs, \$2 each. Extra heavy, selected bulbs, \$1.50 each; \$12.50 for 10. Smaller, strong flowering bulbs, \$9 for 10; \$87.50 per 100.

**PARDALINUM CALIFORNICUM.** Rising to a height of 7 feet, carrying from 15 to 20 flowers on rather long stalks, with whorls of dark green leaves, the flowers begin to expand from the base of the clusters upward, producing a succession of expanded and opening flowers for two or three weeks.

The petals are large, strongly recurved, deep orange, maroon spotted; tips of petals intense scarlet. Hardy and robust, does well in good garden loam, well drained but prefers damp, peaty soil in sun or partial shade.

Give plenty of light and air; protect from high winds. Does not flower well the first season; when established, produces fine flowering plants. Do not disturb the roots. Base-roots, fall planting only, 5 inches deep; July-flowering. Extra heavy, selected bulbs, \$6.50 for 10; \$62.50 per 100. A small, strong flowering bulb, \$4 for 10; \$37.50 per 100.

**PARDALINUM GIGANTEUM.** A variety recently reintroduced, which we can recommend very highly. The very strong spikes reach a height from six to eight feet with very large flowers, the outer petals being a scarlet-orange, the inner half bright orange, thickly dotted purplish brown. Extra selected bulbs. Each, \$1; \$9 for 10.



**PARDALINUM ROEZZII.** Bright yellow flowers, dotted in the center with purplish brown, borne in a pyramid-shaped cluster. Base-roots; fall planting only, 4 inches deep; July-flowering. Extra heavy, selected bulbs, \$9 for 10; \$87.50 per 100. A smaller strong flowering bulb, \$5 for 10; \$47.50 per 100.

**PARRYI.** Distinct, beautiful; grows from 4 to 6 feet high and the slender stems bear several funnel-shaped flowers of soft yellow, with conspicuous brown anthers, delicately fragrant.

A partially shaded place, sheltered from winds, and damp, well drained, peaty soil suits it well; easily cultivated but not a very strong grower. Base-roots; fall planting only, 4 inches deep; July-flowering. Selected bulbs, \$2 each; \$18 for 10. Smaller, good flowering bulbs, \$12.50 for 10.

**PRINCEPS.** A very beautiful hybrid resulting from crossing *Lilium Sargentiae* with *Lilium Regale*. The color is that of *Lilium Regale*, the stem is stouter and it is a more vigorous grower than *Lilium Regale*. It is really a glorified *Lilium Regale*, but flowers from 2 to 3 weeks later. Stem-roots; fall or early spring planting; July-flowering. Extra selected bulbs, \$5 each. A smaller, strong flowering bulb, \$3 each; \$27.50 for 10.

**REGALE (The Regal or Royal Lily).** One of the most beautiful, and one of the hardiest lilies in cultivation—"Lilium Regale" is truly a Royal Lily, worthy of a place in every garden; it is a lover of loam and sunshine.

A vigorous grower with sturdy stems, 4 to 6 feet high, densely covered with long, linear-lanceolate foliage. Center of flower flushed with yellow, shading to white at the outer edges; externally the flowers are streaked with brown on the "ribs," shaded through the almost translucent petals with a delightful pearly tint; the contrast between the rich wine color of the reverse of the petals and the gold shading of the throat is extraordinarily beautiful.

The Regal Lily is very floriferous and, when thoroughly established, bears as high as eighteen and twenty flowers during the season. Like most all other lilies, especially the stem-rooting varieties, they should be planted deep—at least 9 inches, should have good drainage, and when growing they should be watered copiously with liquid manure as they are gross feeders. They succeed in any good rich garden soil.

In the herbaceous border, planted in clumps of 5 to 25 bulbs, they are especially attractive among the Delphiniums and other July-flowering perennials. Where these magnificent lilies are planted in quantity, the air in the cool of the morning and in the evening is laden with a delicious perfume, exhaled from every blossom.

Where possible we suggest planting the Regal Lily in the fall. In the past, Regal Lilies have been scarce; we now produce excellent stock ourselves, carefully rogued as to trueness of type; being desirous of making these fine Lilies available to all gardens, we offer them in three sizes, the smallest of which will flower the first season.

Extra heavy, selected bulbs, \$10 for 10; \$97.50 per 100.

Heavy bulbs, \$7 for 10; \$67.50 per 100.

Strong, good flowering bulbs, \$4 for 10; \$37.50 per 100.

**SARGENTIAE.** A magnificent introduction from China, vigorous and floriferous. The flowers are funnel-shaped, milk-white internally with yellow throat, deep reddish brown externally; delightfully fragrant, on four foot stem. In the very front rank of hardy lilies. Flowers about three weeks later than *Regale*. Readily succeeds in any good rich soil.

Stem-roots; plant in fall or early spring 9 inches deep; late July or early August-flowering. Extra heavy, selected bulbs, \$2 each, \$17.50 for 10. Small, strong flowering bulbs, \$12 for 10.

**SUPERBUM.** The color in this desirable lily varies from pale yellow to deep crimson, more or less spotted on the inner surface of the petals. Valuable as a late-flowering lily. Fine established specimens often reach a height of 10 feet and more, bearing from twenty to thirty elegantly reflexed flowers, arranged in large, cone-like clusters.

Does well in ordinary garden soil if given good drainage, partial shade and a ground cover; prefers a damp situation. Plant in large clumps or masses. Base-roots; fall planting only, 4 inches deep; July-flowering. Selected bulbs, \$5.50 for 10; \$52.50 per 100. A smaller, good flowering bulb, \$3 for 10; \$27.50 per 100.

**WILLMOTTIAE.** This beautiful lily was introduced from China and has proved to be of strong and vigorous constitution. Ordinarily it grows to a height of four feet and bears as high as 20 flowers on a stem; but it has reached a height of 6 to 7 feet and carried as many as forty or more flowers on a stem when established.

These are three inches across of a vivid orange-red; the recurved petals are covered with numerous small brown spots. The slender foliage is a deep rich green and the whole plant is of a distinct and graceful habit. It is so floriferous as to need staking if planted in a windy situation.

Stem-rooting; plant in fall or early spring, 8 inches deep; July-flowering. Extra strong bulbs, \$9 for 10. Smaller, good flowering bulbs, \$7 for 10; \$67.50 per 100.



# August Flowering Lilies

**AURATUM.** There is a lingering charm about the garden in August. One feels the sense of departing beauty and hurries to enjoy what color and fragrance kind summer has left in her flight.

One of the best of all her legacies is Auratum, the Golden Rayed Lily of Japan, discovered on the slopes of snow capped Fusi-Yama, growing wild and untouched in all the glory of its beauty. There it grew in porous open soil, largely composed of volcanic detritus, overlaid by the deep carpet of woodland soil, so dear to all stem-rooting Lilies.

This is one of the noblest of all lilies, being grand in cool thin woodland where it is damp at the roots.

Not a woodland plant in the sense that it grows in the thick of the forests, but it flourishes on the fringes of the woods, in glades and clearings always amongst vegetation, which, while screening the lower part of the stem and keeping the ground cool, leaves the sun free to play on the blooms, but given the necessary conditions of shelter (for exposure to cold wind invites disease) and the desirable one of half shade, it can be grown in well prepared holes in other soils.

These holes may, with advantage, be four to six feet deep, filled with a mixture of well drained peat, and sharp sand, or sandy loam, leaf mold and rubbish heap burnings, with some well rotted manure. Another excellent place to grow these lilies is a Rhododendron or Azalea bed, or any bed where the soil is cool and peaty, and where the young growths will be protected by something bushy.

In exposed gardens they suffer from the late frosts. They must not of course, be actually smothered by the protecting bushes. Auratum is one of the lilies that, in addition to the roots that issue from the bulb, has other roots at the base of the stem.

It should, therefore, be planted deeply, as much as twelve inches, in order to insure that the upper rooting system, which nourishes the growing stem, should be well under ground.

In addition to deep planting, a surface mulching of well rotted manure to keep the ground cool and give nutriment, and frequent watering, both to supply moisture to the soil and to wash in the goodness of the mulch, are desirable for the welfare of the plants.

Never plant in soil containing lime. Mulching should be done every year. There are some very fine varieties of this beautiful lily. Foremost among them all and head and shoulders above the type stands Auratum "Macranthum," a gorgeous thing and a veritable "Peacock among Lilies" and very robust.

The White, golden-rayed, crimson-spotted Lily. Extra heavy, selected bulbs, \$1 each; \$8 for 10; \$77.50 per 100.

Selected bulbs, \$6 for 10; \$57.50 per 100; smaller, but strong flowering bulbs, \$3.75 for 10; \$35 for 100.

## **AURATUM MACRANTHUM (Platyphyllum).**

This a robust growing form; the stem is stouter and attains a greater height, the leaves are much broader; enormous flowers, white, richly-spotted yellow. Undoubtedly the choicest of all, and in our opinion, superior to the type. Extra heavy, selected bulbs, \$1 each; \$8 for 10; \$77.50 per 100.

Selected bulbs, \$6 for 10; \$57.50 per 100; smaller, but strong flowering bulbs, \$3.75 for 10; \$35 per 100.

**AURATUM (Wild-Collected Bulbs).** While in so many gardens this fine lily does exceedingly well, even with a degree of permanency, in some gardens it seems capricious the first season and disappears thereafter completely.

To those of you who have had this experience we would suggest that you try the WILD-COLLECTED bulbs and plant them in deep, spent soil.

These bulbs succeed remarkably well and produce good heads of flowers on strong spikes the first season after planting. They are collected in the mountain regions of Japan in their native habitat. We suggest the planting of these in closely set beds, the beds somewhat raised. This close planting causes a natural shading of the young shoots. They may also be planted in closely set individual clumps.

We offer these WILD-COLLECTED bulbs at \$29 per 100. Reservation for these should be made early.

**BATMANNIÆ.** Clear, glowing apricot flowers, from 3 to 4 inches in diameter, on stems about 3 feet high, borne from four to six in a terminal umbel or cluster; free of spots; is at its best early in August. \$2.75 for 10; \$25 per 100.

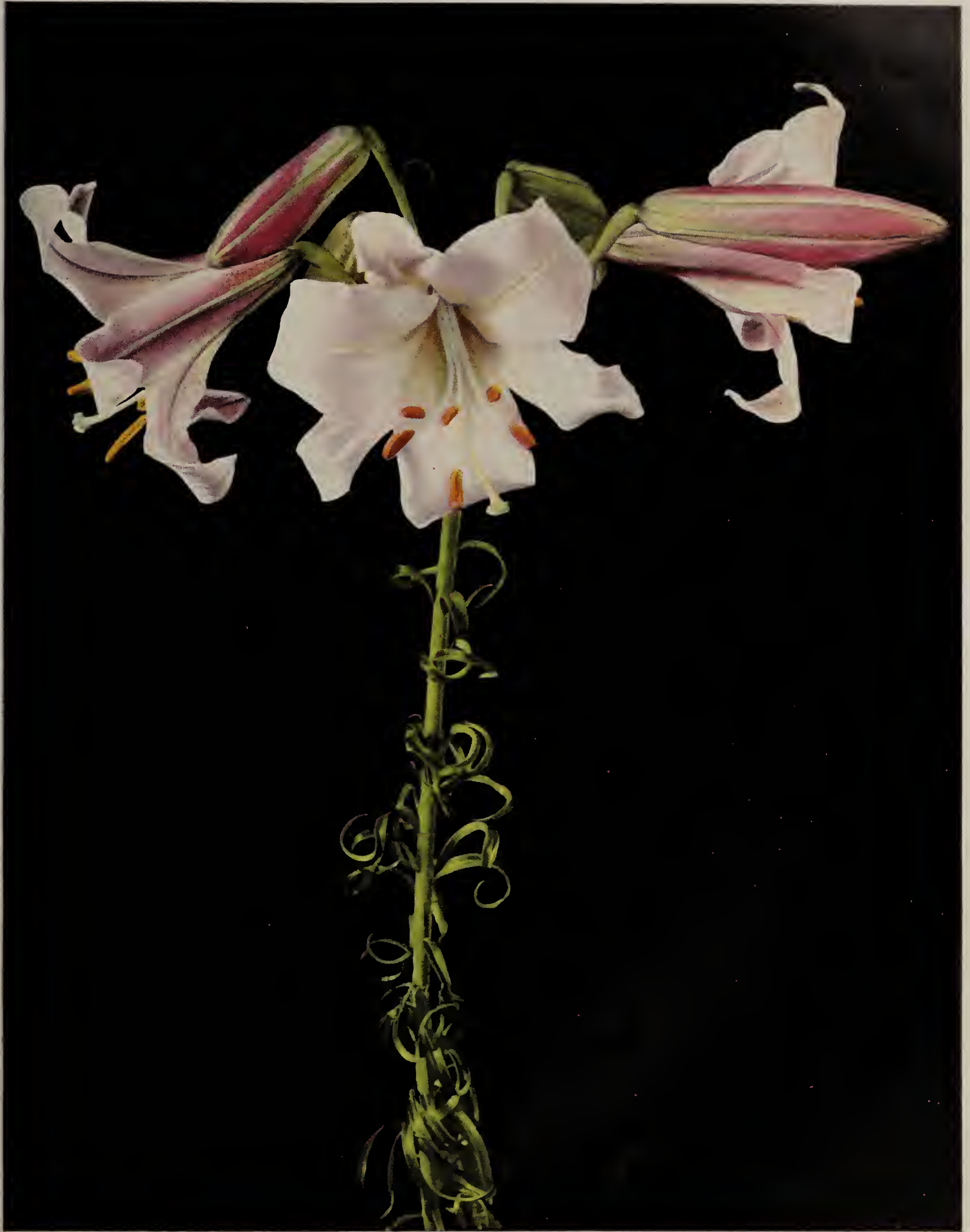
**HENRYI.** A splendid garden plant, vigorous in its growth, failing very seldom. One of the best border lilies, reaching over 8 feet and more in height when established, and bearing more than twenty flowers of a rich, deep, orange-yellow. Fine foliage. Does well in both light and heavy loam, but prefers soil with a mixture of peat.

Plant very deep, 10 inches. A partially shaded place, sheltered from high winds, suits it best. It is a beautiful lily. Stem-roots; late fall or early spring planting. August-September flowering. Extra selected bulbs, \$1.25 each; \$10 for 10; \$97.50 per 100.

Selected Bulbs, \$8 for 10; \$77.50 per 100; smaller, but strong flowering bulbs, \$3.75 for 10; \$35 per 100.

**SPECIOSUM.** Originally a native of Korea, deservedly one of the greatest favorites as a border plant, of daring as well as beautiful form. The petals are well rolled back and are handsomely spotted, often branded with distinct color. The style is thrown out in a curved line of much grace and strength.





Her Majesty—The Regal Lily (*Lilium Regale*)





Lilium Umbellatum

See Page 43



Lilium Centifolium

See Page 44



Lilium Auratum Platyphyllum

See Page 46



Lilium Speciosum Melponene

See Page 46



The stamens boldly diverge from it. The anthers are conspicuous for their size and color and extremely delicate poise. In addition to all these attractive qualities it has a strongly waved outline to the petals, which adds much to its beauty. It flowers through the late summer into autumn.

To see the plant growing impresses one with a feeling of vigor and well being. Must be planted deeply because it forms an unusually strong mass of stem-roots.

The cultivation of this lily lays no great tax on the resources or ingenuity of the planter, and its requirements once understood, it may be relied upon to prosper, sending up its flowering stems year after year in increasing numbers.

While *Speciosum* will grow in limy soil, there can be no doubt that it is more at home in ground that is free from lime, and it may be grown to perfection in a rich, open, woodland soil overlying a stiff, sandy loam, into which its long roots can wander as they please.

On the richness of the top-soil depends the growth of the stem and flowers, and it is no exaggeration to say that one cannot mulch this lily too much.

It opens its flowers so late in the season that it is probably best to plant *Lilium Speciosum* in full sunshine. Plant 10 or 12 inches deep, of course among ground shading shrubs, making sure as to drainage.

**SPECIOSUM ALBUM KRÆTZERI.** The true variety as offered by us is very scarce. Beautiful, snow-white flowers with a golden green stripe through the center of each petal, and anthers of a coppery tint. Alike in the form of the flower and in the way of growing, this lily is one of the most beautiful we have. Extra selected bulbs, \$9. for 10; \$87.50 per 100.

**SPECIOSUM ALBUM NOVUM.** Its form is distinct from *Krætzeri*. Flowers are large and of the purest white and beautiful golden yellow anthers. Extra heavy, selected bulbs, \$8 for 10; \$77.50 per 100. Selected bulbs, \$6 for 10; \$57.50 per 100; smaller, but strong flowering bulbs, \$3.25 for 10; \$30 per 100.

**SPECIOSUM MAGNIFICUM (Rubrum Improved).** Rich, ruby-carmine, margined white; stout of substance and broad of petal. This variety stands out prominently on account of its vigorous growth as well as the size and depth of coloring of the blooms.

Extra selected bulbs, \$8 for 10; \$77.50 per 100. Selected bulbs, \$6 for 10; \$57.50 per 100.

A smaller but good flowering bulb, \$3.25 for 10; \$30 per 100.

**SPECIOSUM MELPOMENE.** The delicate beauty of the finer colored flowers makes this variety most desirable. Deep carmine-crimson, intensified by a narrow margin of white.

Extra selected bulbs, \$8 for 10; \$77.50 per 100. Selected bulbs, \$6 for 10; \$57.50 per 100.

A smaller, but good flowering bulb, \$3.25 for 10; \$30 per 100.

**TIGRINUM FLORE PLENO.** The double form. The best example of a double lily we have. Extra selected bulbs, \$4 for 10; \$37.50 per 100.

**TIGRINUM SPLENDENS.** The finest form of Tiger Lily with the richest color. The large shapely flowers are of a rich dark salmon-orange spotted with glossy black. This lily is very robust in habit and of easy culture. Stem-roots; late fall or early spring planting, 10 inches deep; August-September flowering. Extra selected bulbs, \$4 for 10; \$37.50 per 100. A smaller, good flowering bulb, \$2.25 for 10; \$20 per 100.

## *Hemerocallis*

The varieties offered by us are vastly superior to those commonly grown. They are all choice, later-flowering Hybrids of great beauty and real value.

**BAY STATE.** Large flower of a deep yellow, flowering middle of August.

**CRESSIDA.** Large flower of a bright orange, flowering middle of July.

**D. D. WYMAN.** A beautiful light golden yellow, flowering in early July.

**GOLDENI.** Very large flower of a deep orange, flowering in July.

**GYPSY.** Large flower of deep orange, flowering in August.

**J. A. CRAWFORD.** Very large flower of apricot-yellow and flowering middle of July.

Hybrid *Hemerocallis* are very valuable for planting in borders, in the cutflower garden and for utilizing moist and shady positions.

**LEMONA.** Immense flowers of pale lemon-yellow. A beautiful novelty. Flowers middle of July.

**MRS. A. H. AUSTIN.** Large flower of deep golden yellow, flowering in late July.

**MRS. W. H. WYMAN.** Very large flowers of the palest lemon-yellow, flowering in July.

**THE GEM.** A fine flower of deep orange-yellow, flowering in early July.

Extra strong, selected plants, \$0.75 each; \$6 for 10.

A collection of one strong plant each of the above 10 varieties, \$6.



# Eremuri

## Foxtail Lilies, Giant Asphodels

### FINEST VARIETIES

**BUNGEI.** Vigorous, citron-yellow, reaching 4 feet in height. Extremely handsome; flowers in July. Extra heavy specimen roots, \$1.50 each. Strong, good flowering roots, \$1 each.

**ELWESII.** Enormous soft pink spike; broad green foliage. A vigorous, distinct form of *E. robustus*. Height, 10 to 12 feet. Flower in early June. Extra heavy, specimen roots, \$3 each. Strong, good flowering roots, \$2 each.

**ELWESII ALBUS.** Same habit as above: pure white. Very beautiful; flowers in early June. Extra heavy, specimen roots, \$3 each. Strong, good flowering roots, \$2 each.

**HIMALAICUS.** Pure white, close-furnished spike. Height, 6 to 8 feet. Flowers in early June. Extra heavy, specimen roots, \$2 each. Strong, good flowering roots, \$1.50 each.

**ROBUSTUS.** Rosy pink. A beautiful, vigorous species; glaucous foliage. Flowers in early June. Extra heavy, specimen roots, \$4 each. Strong, good flowering roots, \$2.50 each.

**SHELFORD.** Coppery yellow or orange, deeper in color than *E. warei* and later. Grows 6 feet tall, nearly half of the spike being clothed with the flowers and coppery tinted buds. A grand plant. Flowers in early July. Extra heavy, speci-

men roots, \$3 each. Strong, good flowering roots, \$2.50 each.

**SHELFORD ROSALIND.** A strong vigorous grower resembling the variety Shelford in growth and habit but in color a very bright pink. Blooms in early July. Extra heavy, specimen roots, each, \$3.

**SHELFORD WHITE BEAUTY.** Resembles the variety Shelford in habit and growth, but a pure white in color. Very free-flowering. Blooms in early July. Extra heavy, specimen roots, each, \$3.

**TUBERGENI.** A beautiful Hybrid, the result of a cross between *Himalaicus* and *Bungei* with fine spikes reaching a height of six feet or more with pale yellow flowers. Blooms at the end of May. The earliest of the yellow varieties to come into flower. Extra heavy, specimen roots, each, \$4. Strong, good flowering roots, each \$3.

**WAREI.** The general color effect of the densely clothed spikes is salmon-buff, but a close inspection reveals shades of yellow, pink, and orange. An unusually vigorous habit, a good increaser, a reliable bloomer, a splendid spike up to 8 feet in height, a rich color scheme—these qualities render this a great favorite. Flowers in early July. Extra heavy, specimen roots, \$5 each. Strong, good flowering roots, each, \$4.

One extra heavy root of each of these eight varieties for \$28.



Eremuri—Foxtail Lilies.





These views were taken on my last visit to Holland, where bulbs constitute a tremendous industry and its people have a great affection for the exquisite beauty which emerges from these bulbs.



#### GREETINGS:

My official visit as ambassador to the great Decennial Flower Show in Heemstede, Holland, gave me an unusual opportunity to study the choicest varieties of bulbs in this unforgettable exhibition as well as in the leading nurseries of that countryside.

Lovely colorings, aesthetic forms, unusual size consistent with beauty, and sturdiness of growth were naturally the pre-requisites of my interest; bearing constantly in mind the conditions under which we must grow bulbs in these United States.

A number of new types were presented for judging and the privilege of naming the best five tulips was accorded me. These varieties are being brought over and we shall try them out in our experimental gardens at "Paradou" to ascertain how they will grow under American conditions. This is in accordance with our policy to first prove the merits of a new type or variety before presenting it to our clients.

Recently I sent you a catalog, which contains the choicest varieties in the bulb world irrespective of price and I suggest that you select your favorites with the utmost confidence of success.

#### SOUVENIRS WITH IMMEDIATE ORDER

Orders received now assist us a great deal and I have, therefore, arranged to present a souvenir package of special tulip bulbs in choice variety to every person ordering on or before July 25th. I guarantee that they will be worth at least ten per cent of your order and I am sure that the results obtained from them will be a pleasant surprise. So take out your catalog now and mail your order at once.

*John J. Scheepers*



John Scheepers, Inc.  
522 Fifth Avenue, New York City



DISPLAY GARDENS at "*Paradou*," Brookville, Long Island, N. Y.











From \_\_\_\_\_

Street \_\_\_\_\_

Town \_\_\_\_\_

State \_\_\_\_\_

# **JOHN SCHEEPERS, Inc.**

**Flowerbulb Specialists**

**522 Fifth Avenue (Cor. 44th St.)**

**NEW YORK CITY**











